



Fordwych Road, NW2

£646 Per week

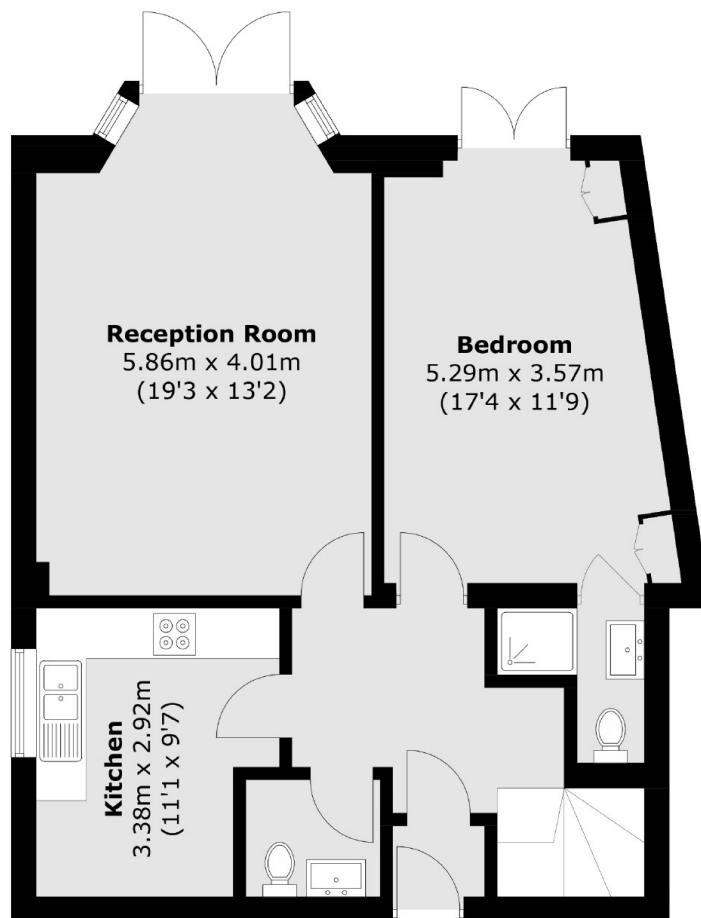
A three double bedroom duplex flat with large private garden. The property is set over two floors with a eat in kitchen, reception room that has patio doors leading to a 25 foot garden. Perfect for a family.

Located on the West Hampstead borders being less than half a mile to West End Lane and Kilburn tube is just around the corner.

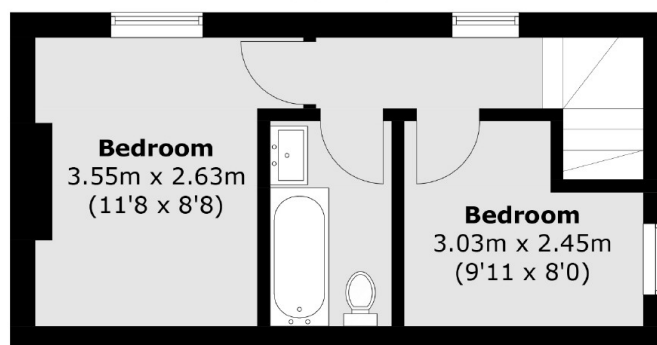
Features

- Three Double Bedrooms
- Three Bathrooms
- Duplex
- Garden
- Raised Ground Floor

Fordwych Road, London, NW2



Second Floor



First Floor

Total area (approx.): 91.0 sq. m (979.5 sq. ft)