



Portsdown Avenue, NW11

£1,604 Per week

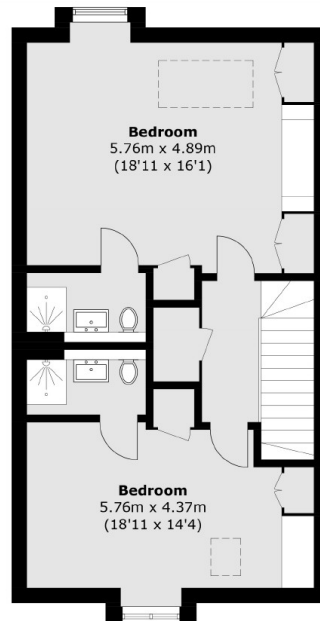
This newly built four bedroom, four bathroom house has a modern interior with lots of natural light. The spacious living room opens to a patio, perfect for entertaining. The kitchen is fully equipped with modern appliances, offers plenty of storage, and includes comfort cooling throughout the property.

This house is situated in the sought after area of Golders Green, known for its excellent schools, parks, and vibrant community. The location offers easy access to local amenities, public transportation, and motorways, making it convenient for both families and commuters.

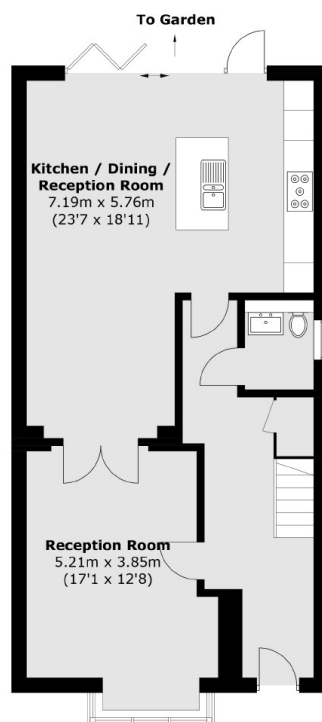
Features

- New Build House
- Four Double Bedrooms
- Four Bathrooms
- Ample Storage
- Private Garden
- Off Road Parking

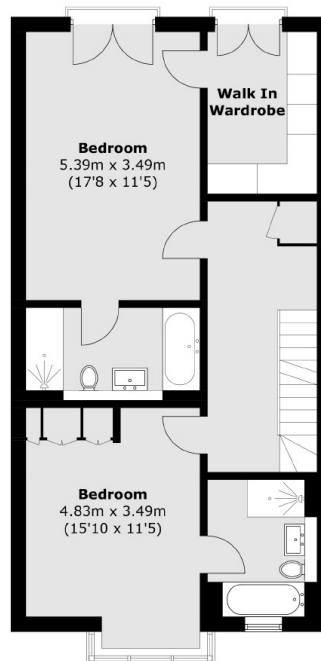
Portsdown Avenue, London, NW11



Second Floor



Ground Floor



First Floor

Total area (approx.): 205.5 sq. m (2,212.0 sq. ft)