



Lymington Road, NW6

£730 Per week

A beautifully presented two double bedroom, two bathroom apartment to let within this modern portered block. Perfect for a professional couple or family.

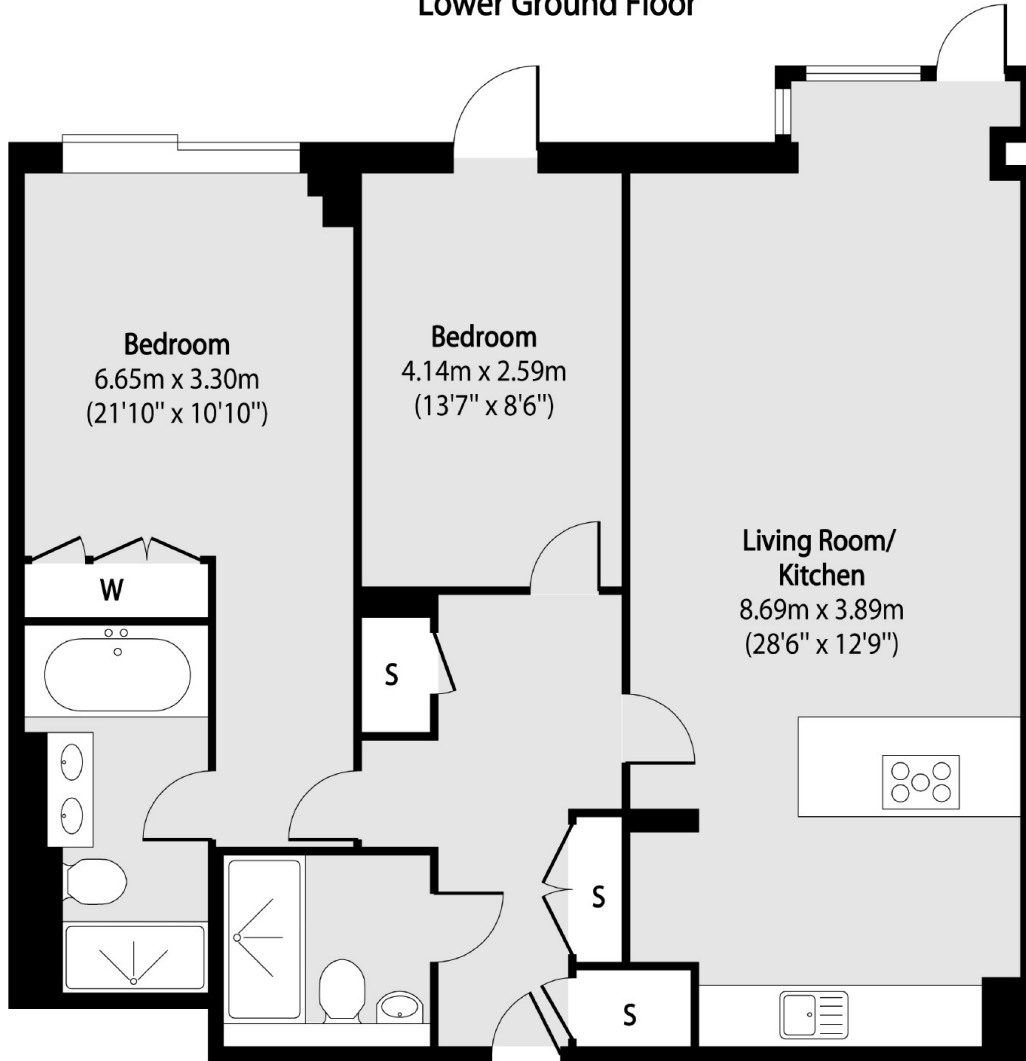
Located set back from Finchley Road just 0.2 miles from West End Lane or half a mile from central Hampstead.

Features

- Two Double Bedrooms
- Two Bathrooms
- Open Plan Living
- Paved Garden
- Concierge
- Parking*

Lymington Road,
London, NW6

Lower Ground Floor



Total area (approx): 85.84 sq m (924 sq. ft)