



## Greencroft Gardens, NW6

£650 Per week

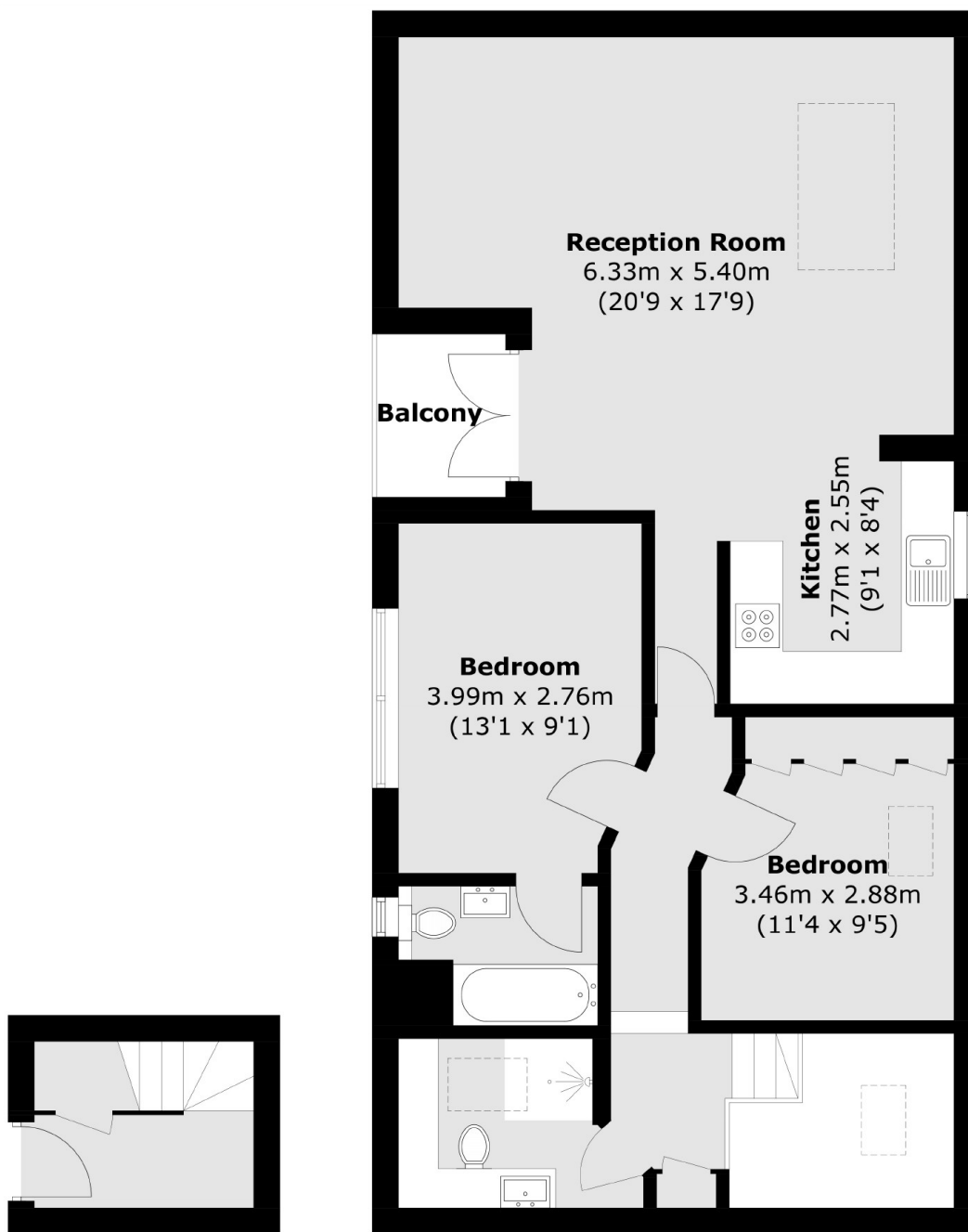
This spacious two double bedroom flat has a private balcony and is located on the top floor of this converted Victorian building. The property is ideal for entertaining with the large open plan lounge.

Greencroft Gardens is situated within the South Hampstead conservation Area. Finchley Road underground station and West Hampstead train stations, as well as the local amenities of West End Lane are within easy reach.

### Features

- Two Double Bedrooms
- Balcony
- Open Plan
- Top Floor
- Victorian Conversion
- Wooden Floors

# Greencroft Gardens, London, NW6



## Ground Floor

## First Floor

Total area (approx.): 81.1 sq. m (872.9 sq. ft)  
(Excluding Void)

Balcony area (approx.): 2.7 sq. m (29.1 sq. ft)

# Dexters

West Hampstead Lettings  
106 West End Lane  
London  
NW6 2LS  
Lettings  
020 7644 9301

Energy Rating: . We aim to make our particulars both accurate and reliable. However they are not guaranteed; nor do they form part of an offer or contract. If you require clarification on any points then please contact us, especially if you're traveling some distance to view. Please note that appliances and heating systems have not been tested and therefore no warranties can be given as to their good working order.

 **RICS** Regulated  
Estate Agent  
and Letting Agent

dexters.co.uk