



Kings Gardens, NW6

£623 Per week

A newly refurbished two double bedroom penthouse apartment on the top floor of a well maintained mansion building with a porter and lift access. Perfect for a couple or professional sharers.

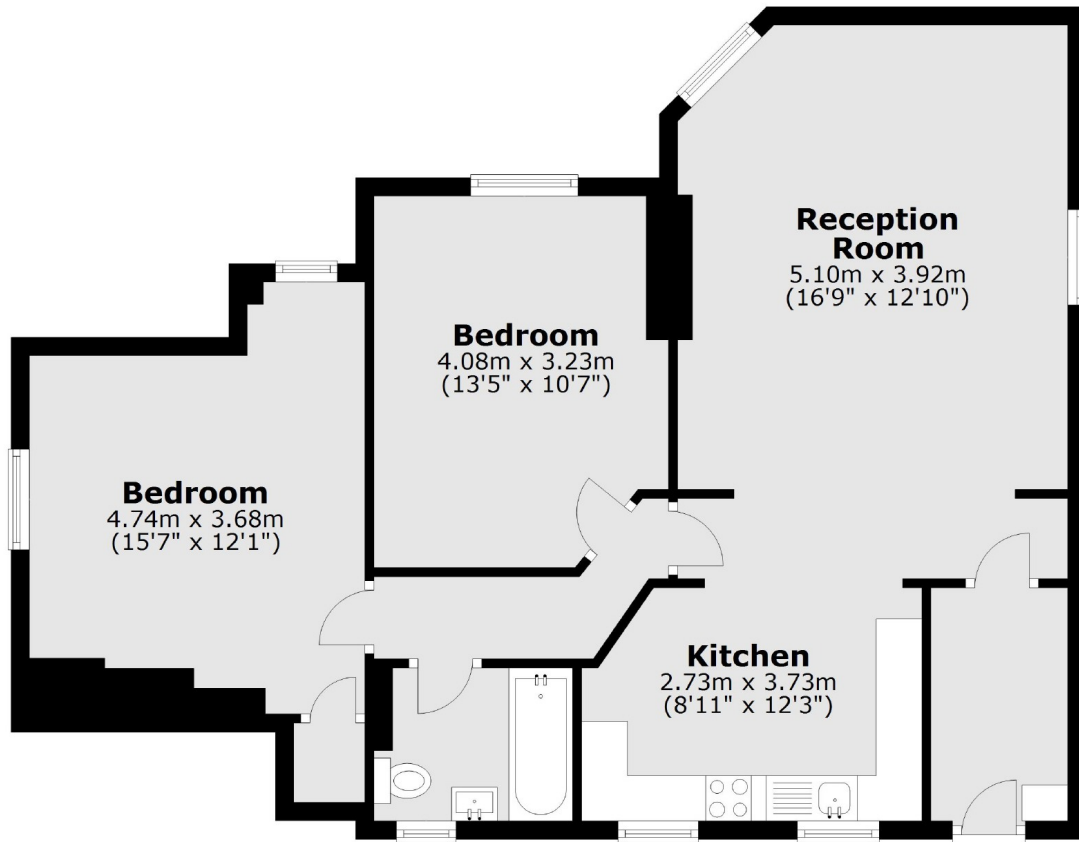
Located on West End Lane moments from West Hampstead Tube station, Overground and Thameslink. With many local grocery stores, restaurants and boutique shops also nearby.

Features

- Penthouse
- Two Bedrooms
- Amazing Views
- Mansion Building
- Modern Interior
- Lift Access

Kings Gardens,
London, NW6

Fifth Floor



Total area: approx. 76.5 sq. metres (823.6 sq. feet)