

## Compayne Gardens, NW6

£1,295 Per week

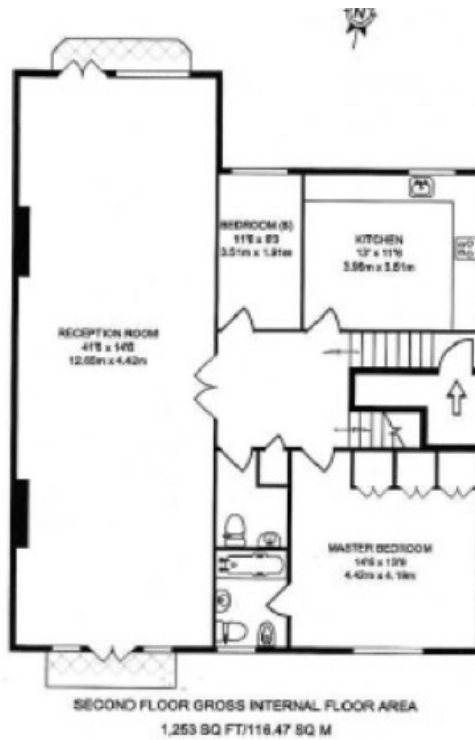
A spacious, five bedroom split level property set on the third and fourth level of this period conversion. The property offers a larger than average reception room with two fireplaces, wooden flooring, high ceilings and four bathrooms. The property also had the added benefit of two balconies off each end of the double reception and access to a large roof terrace.

Set in this Period conversion located in the heart of the tranquil South Hampstead conservation area half a mile from Finchley Road, and less than a quarter of a mile from West End Lane.

### Features

- Five Bedrooms
- Three Bathrooms
- One Reception
- Modern Kitchen
- Three Balconies
- Premier Road

# Compayne Gardens, London, NW6



Representation of current layout, floor area approx 2,422 Sq Ft (225 Sq M)