

Heritage Lane, NW6

£761 Per week

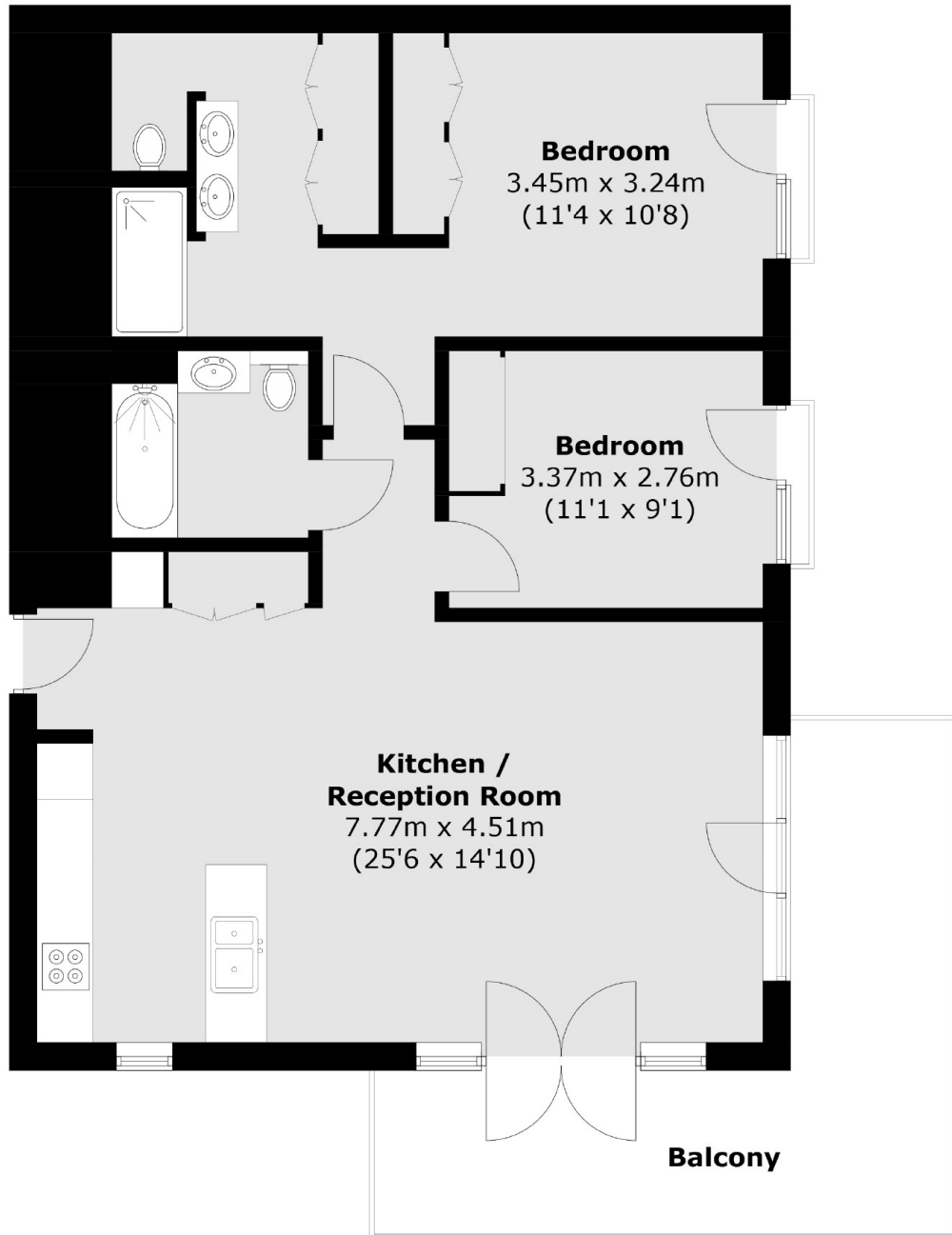
Set on the seventh floor (with lift access) within a striking newly built development is this spacious two double bedroom, two bathroom apartment with a wrap around south facing balcony boasting 270 degrees of uninterrupted views of central London. The property benefits from a concierge, gym and sauna.

West Hampstead Square is the development everyone's been talking about. Located in the heart of West End Lane its the perfect location for those that want the mixture of great transport and local restaurants.

Features

- Two Bedrooms
- Two Bathrooms
- Balcony
- Concierge
- Communal Gardens
- Gym On Site

Heritage Lane,
London, NW6



Total area (approx.): 79.7 sq. m (857.8 sq. ft)
Balcony: 17.4 sq. m (187.3 sq. ft)