



## Belsize Road, NW6

£876 Per week

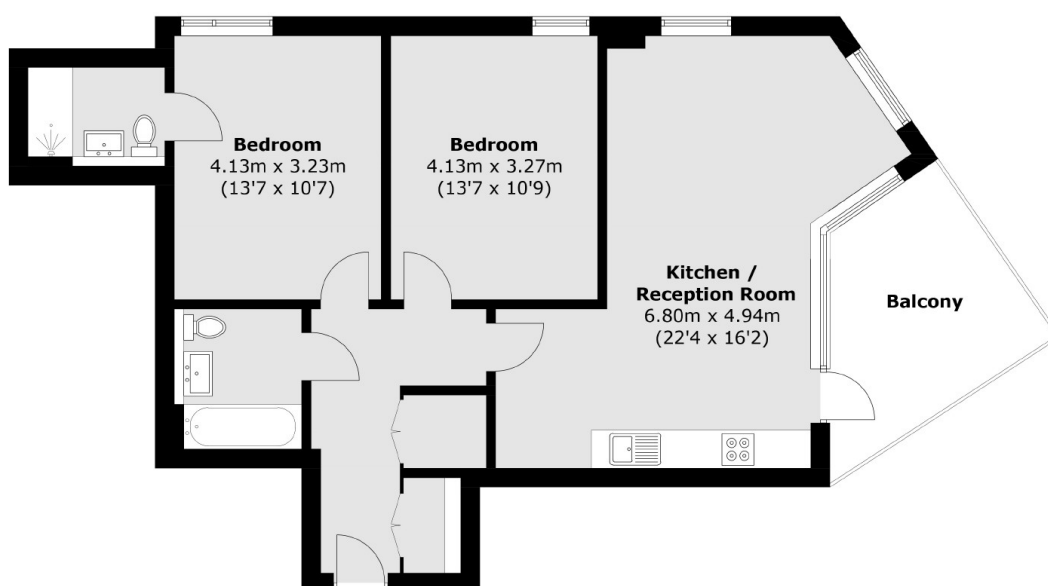
This bright and spacious two double bedroom apartment is set on the eighth floor (with lift access) within a striking new development. The property benefits from a private balcony, allocated parking, concierge and bicycle storage

Belsize Road is within half a mile from both South Hampstead and Swiss Cottage and all the various shops, cafes and restaurants, including multiple transport links to Regent's Park and Central London.

### Features

- Two Double Bedrooms
- Allocated Parking Space
- Large Balcony
- Concierge
- Air Conditioning
- Bicycle Storage

Belsize Road,  
London, NW6



Total area (approx.): 77.4 sq. m (833.1 sq. ft)  
Balcony: 10.4 sq. m (111.9 sq. ft)