



Kingsgate Place, NW6

£438 Per week

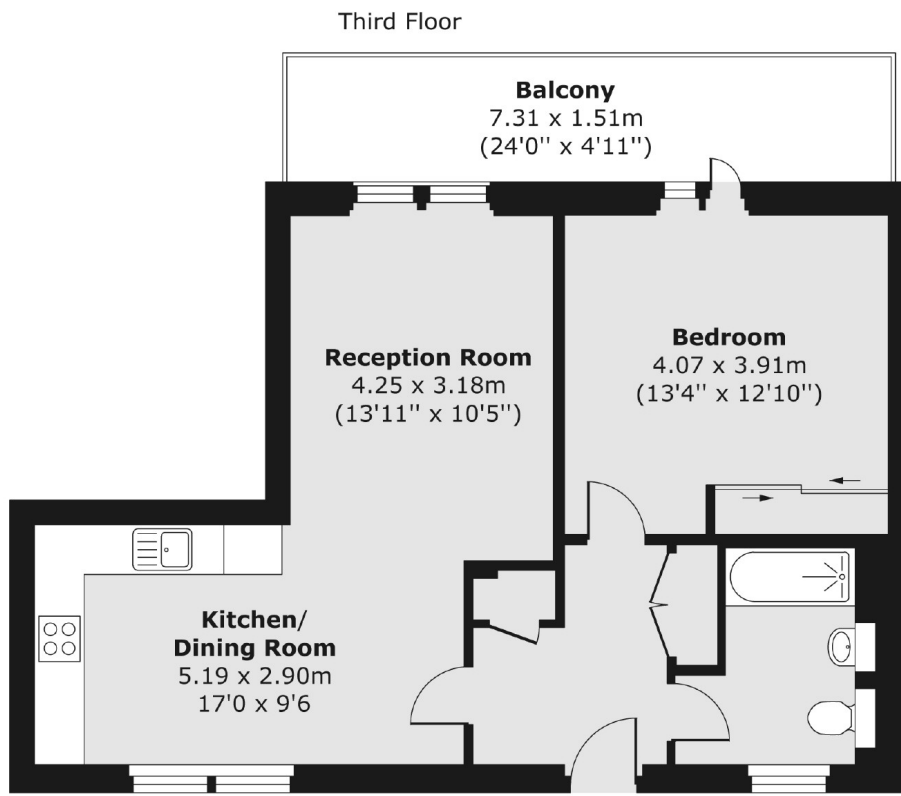
Set on the top floor is this spacious one bedroom apartment within a modern development. This home comprises a open plan living kitchen with integrated appliances and bright reception room with access to a large balcony and rent inclusive of Gas.

Kingsgate Place is perfectly positioned near to the green open spaces of Kilburn Grange Park and trendy West End Lane with its plethora of shops, bars and restaurants.

Features

- Top Floor Apartment
- Lift Access
- Private Large Balcony
- Gas Included
- Courtyard Communal Gardens
- Modern Apartment

Kingsgate Place, London, NW6



Total area (approx.) 57.21 sq. m (616 sq. ft)
Balcony (approx.) 11.04 sq. m (119 sq. ft)