

## Lithos Road, NW3

£600 Per week

A unique and private, gated, brand new maisonette with three patio gardens. The property has two double bedrooms, two bathrooms and a really cool, spacious open plan living room.

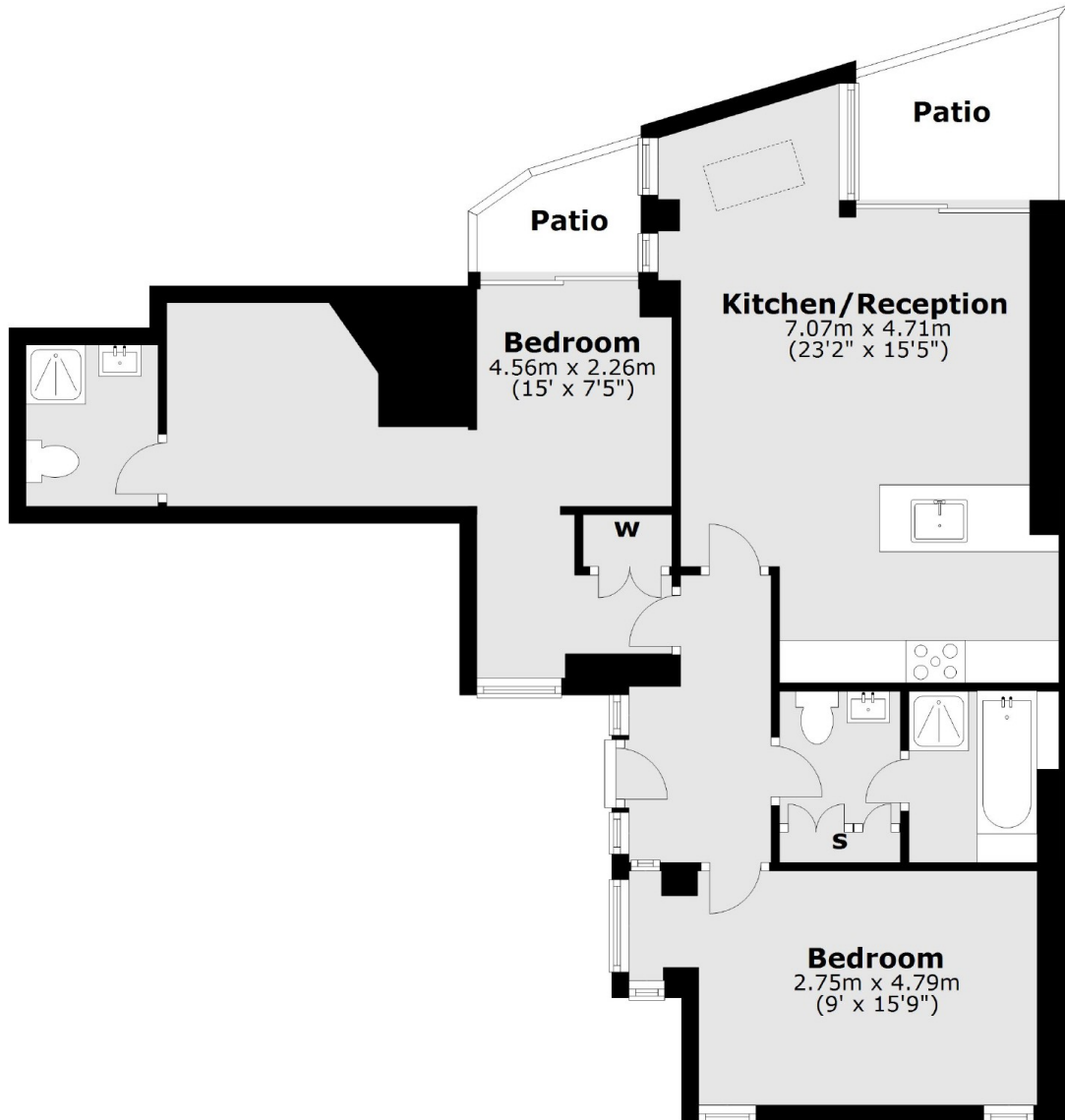
Lithos Road is located just off Finchley Road really close to the O2 shopping centre with a great selection of shops, restaurants and the cinema. There are lots of transport options close by including the Jubilee Line.

### Features

- Brand New
- Private Gated Entrance
- Two Double Bedrooms
- Three Outside Spaces
- Unique Property
- Wood Floors

Lithos Road,  
London, NW3

### Lower Ground Floor



Total area: approx. 73.8 sq. metres (794.6 sq. feet)