



## Lithos Road, NW3

£715 Per week

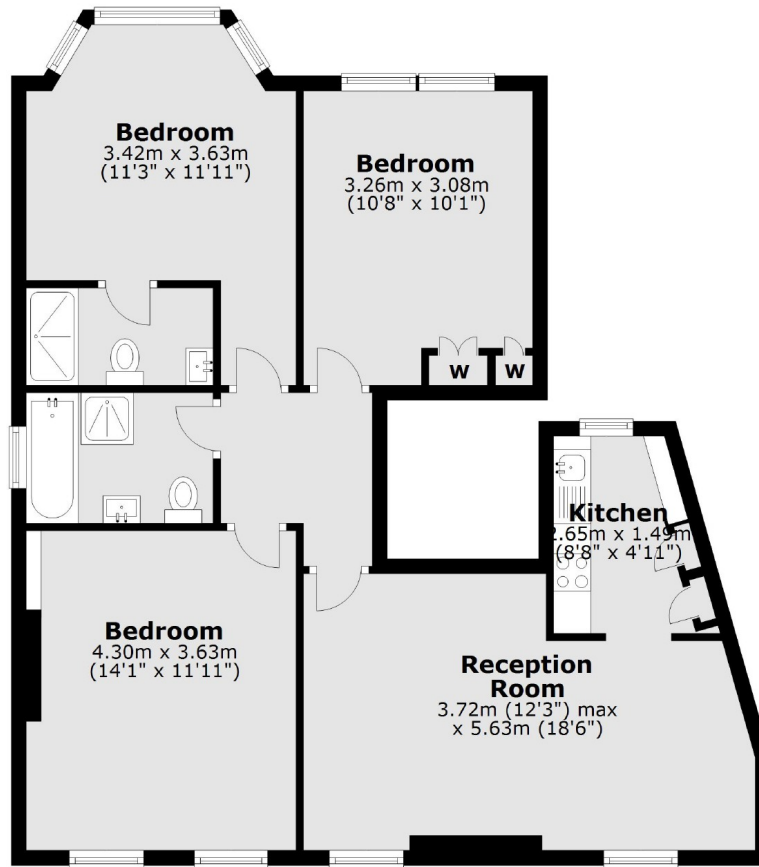
A brand new apartment in a refurbished detached mansion block. The property has three double bedrooms, two bathrooms, a semi open plan kitchen reception, built-in storage arranged over one floor and a secure video access gated frontage.

Moments from multiple amenities on Finchley Road, transport into Central London is at hand with buses and trains at Finchley & Frognal (Overground) and Finchley Road (Jubilee Line).

### Features

- Three Double Bedrooms
- Refurbished Mansion Block
- Two Bathrooms
- First Floor Flat
- Semi Open Plan Kitchen
- Very Secure

Lithos Road,  
London, NW3



Total area: approx. 59.1 sq. metres (636.5 sq. feet)