



## Finchley Road, NW11

£588 Per week

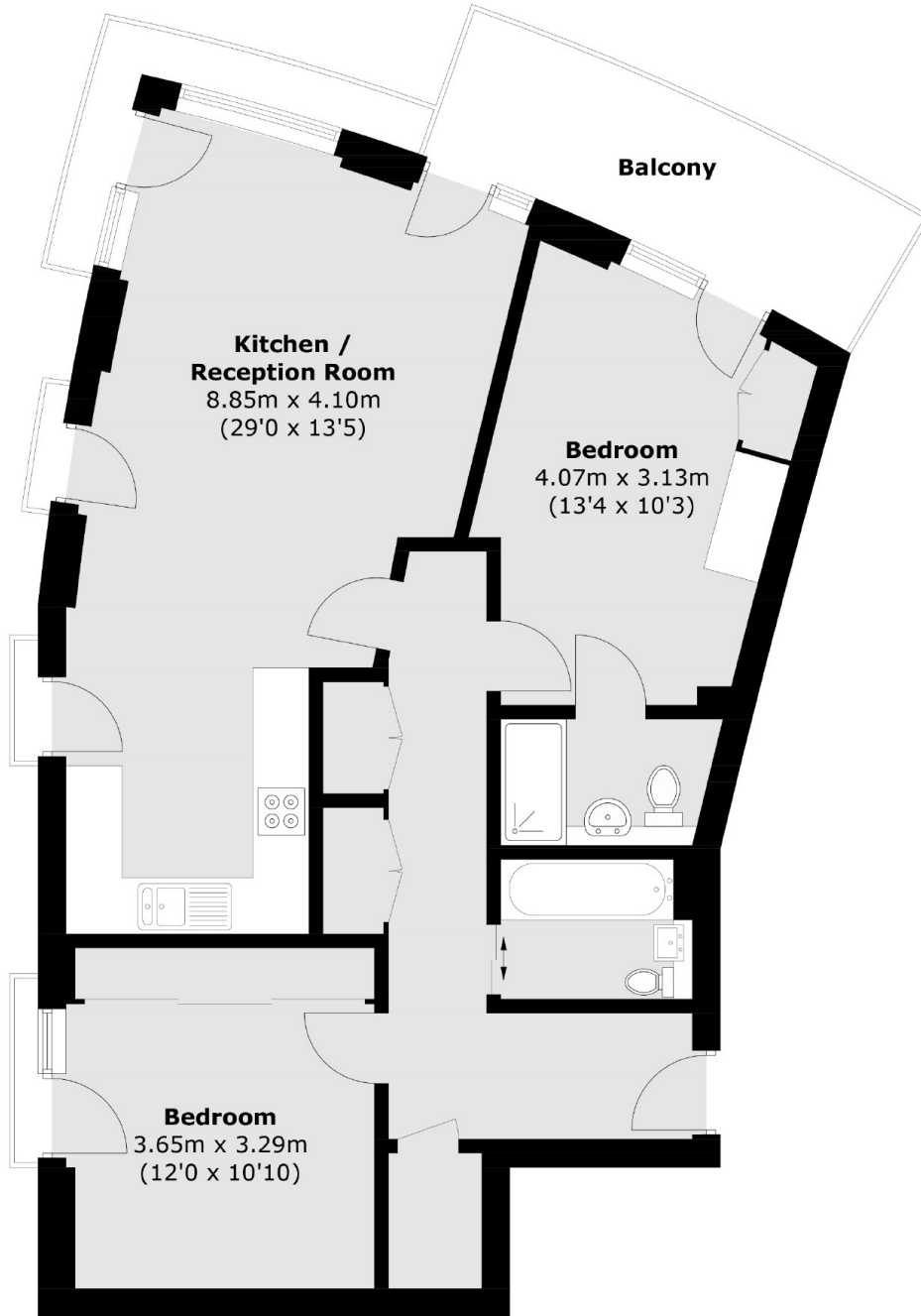
Set on the sixth floor is this immaculate two bedroom, two bath apartment boasting open-plan living space, a private balcony and spectacular panoramic views across North London.

Conveniently located close to amenities in Child's Hill with the green spaces of Golders Hill Park also close by.

### Features

- Two Bedrooms
- Two Bathrooms
- Lift
- Balcony
- Communal Roof Terrace
- Underground Parking

Finchley Road,  
London, NW11



### Sixth Floor

Total area (approx.): 78.4 sq. m (843.9 sq. ft)