



Finchley Road, NW11

£415 Per week

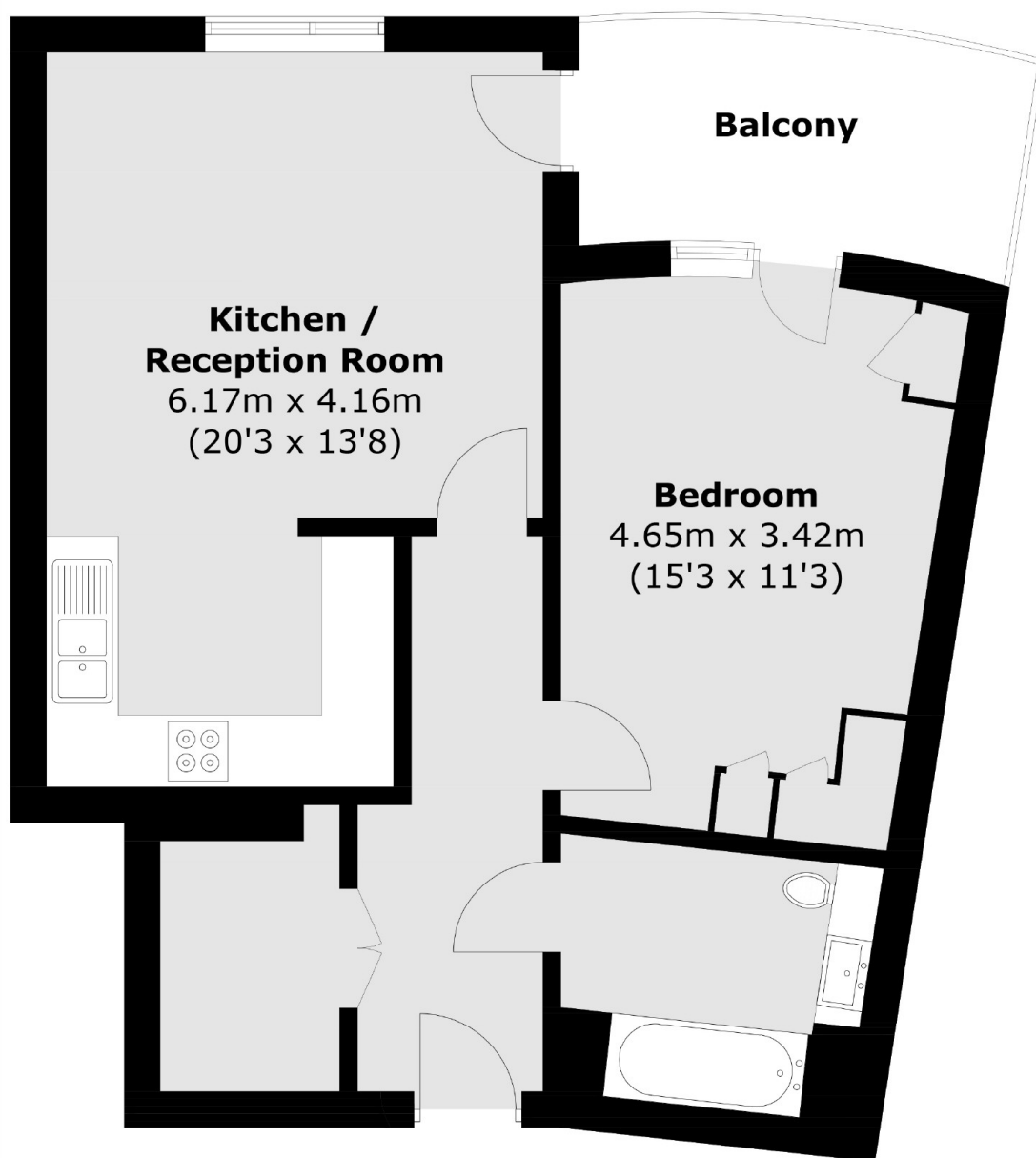
Set on the fourth floor is this immaculate one bedroom, one bath apartment boasting open-plan living space with a private balcony. Can include a parking space.

Close to Golders Green tube, Cricklewood Thameslink and a number of bus routes on the doorstep. There is also the open spaces of Hampstead Heath and Golders Hill Park close by.

Features

- One Bedrooms
- One Bathrooms
- Lift
- Balcony
- Communal Roof Terrace
- Parking

Finchley Road,
London, NW11



Fourth Floor

Total area (approx.): 55.1 sq. m (593.1 sq. ft)
Balcony: 7.0 sq. m (75.3 sq. ft)

Dexters

West Hampstead Lettings
106 West End Lane
London
NW6 2LS
Lettings
020 7644 9301

Energy Rating: B. We aim to make our particulars both accurate and reliable. However they are not guaranteed; nor do they form part of an offer or contract. If you require clarification on any points then please contact us, especially if you're traveling some distance to view. Please note that appliances and heating systems have not been tested and therefore no warranties can be given as to their good working order.

 **RICS** | Regulated
Estate Agent
and Letting Agent

dexters.co.uk