



Alberon Gardens, NW11

£461 Per week

A spacious two double bedroom apartment with two bathrooms located on the first floor (with lift) in this purpose built building. The property also benefits from allocated parking

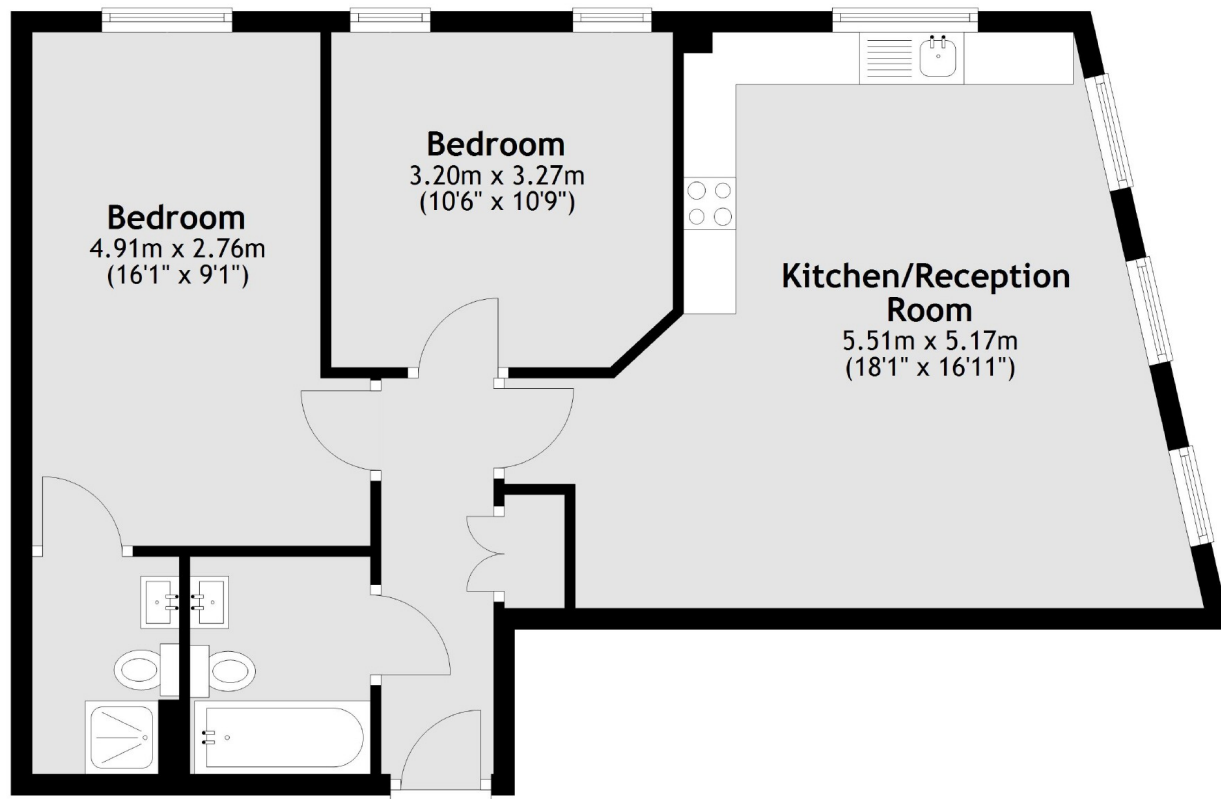
Elderberry Court is ideally located close to the shops and amenities of Golders Green and Brent Cross Shopping Centre, while further benefiting from its proximity to Golders Green Station and Brent Cross Station (Northern line)

Features

- Two Double Bedrooms
- Allocated Parking
- Open Plan
- Two Bathrooms
- Lift
- First Floor

Alberon Gardens,
London, NW11

First Floor



Total area: approx. 65.2 sq. metres (701.4 sq. feet)