



## Finchley Road, NW11

£565 Per week

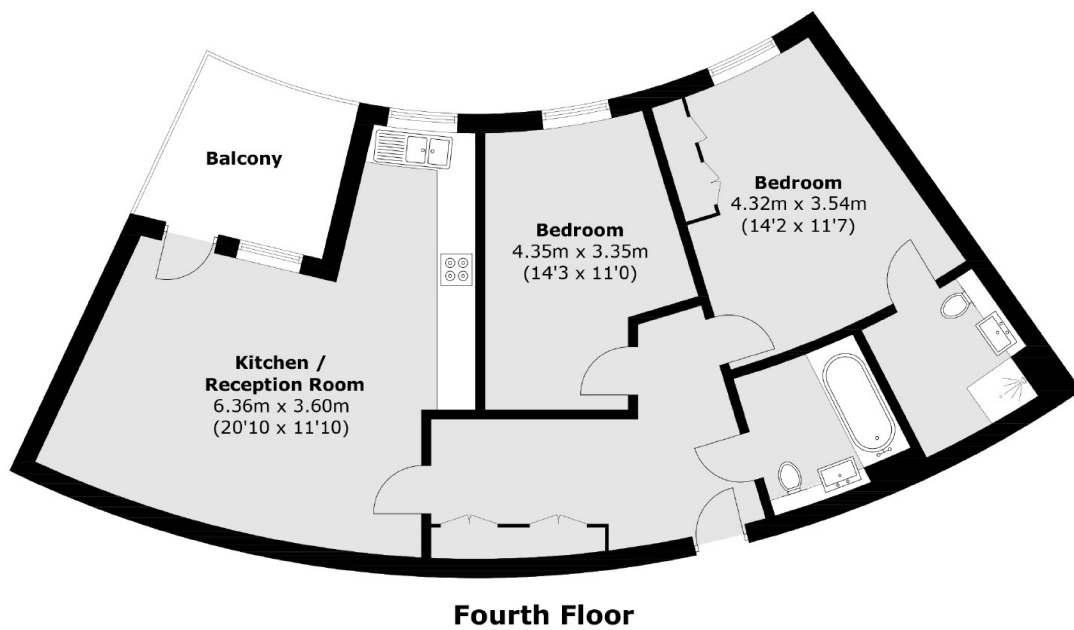
Set on the fourth floor (with a lift) of this new development is this two double bedroom two bathroom apartment with a sunny terrace that has amazing views over London. Underground parking also included.

Close to Golders Green tube, Cricklewood Thameslink and a number of bus routes on the doorstep. There is also the open spaces of Hampstead Heath and Golders Hill Park close by.

### Features

- Two Bedrooms
- New Development
- Two Bathrooms
- Terrace
- Wood Floors
- Underground Parking

Finchley Road,  
London, NW11



Total area (approx.): 81.5 sq. m (877.2 sq. ft)  
Balcony: 7.1 sq. m (76.4 sq. ft)

**Dexters**

West Hampstead Lettings  
106 West End Lane  
London  
NW6 2LS  
Lettings  
020 7644 9301

Energy Rating: B. We aim to make our particulars both accurate and reliable. However they are not guaranteed; nor do they form part of an offer or contract. If you require clarification on any points then please contact us, especially if you're traveling some distance to view. Please note that appliances and heating systems have not been tested and therefore no warranties can be given as to their good working order.

 **RICS** | Regulated  
Estate Agent  
and Letting Agent

[dexters.co.uk](http://dexters.co.uk)