



Finchley Road, NW11

£450 Per week

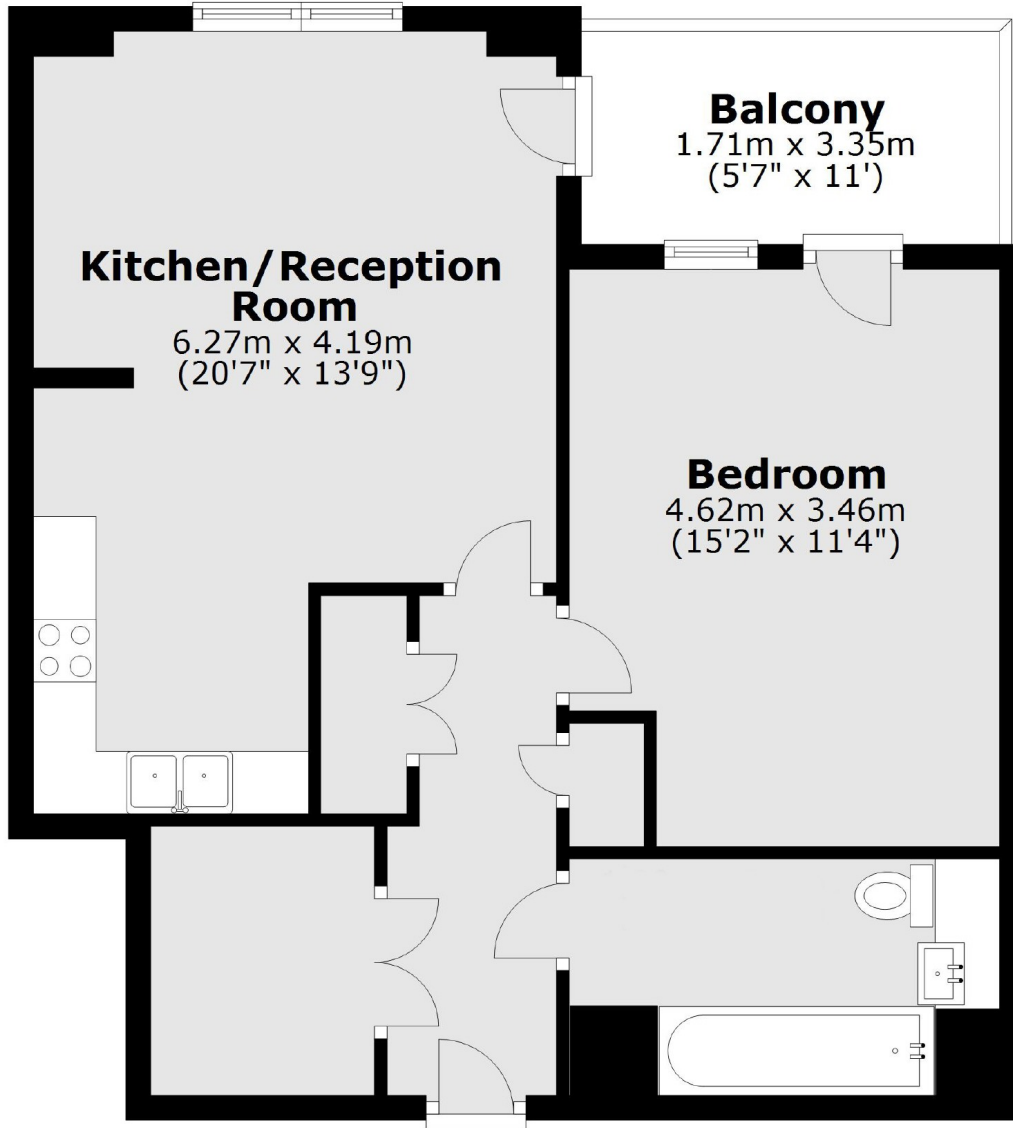
Set on the 2nd floor (with a lift) of this new development is this immaculate one bedroom, one bath apartment boasting open-plan living space with a private balcony.

Close to Golders Green tube, Cricklewood Thameslink and a number of bus routes on the doorstep. There is also the open spaces of Hampstead Heath and Golders Hill Park close by.

Features

- One Bedroom
- One Bathroom
- Open Plan Kitchen Living
- Private Balcony
- Communal Roof Terrace
- Lift

Finchley Road,
London, NW11



Main area: Approx. 57.1 sq. metres (614.8 sq. feet)
Plus balconies, approx. 6.2 sq. metres (67.1 sq. feet)