



Belsize Road, NW6

£345 Per week

A bright two bedroom apartment on the top floor of this period conversion. The flat has a spacious open-plan reception, double bedroom, single bedroom and bathroom suite.

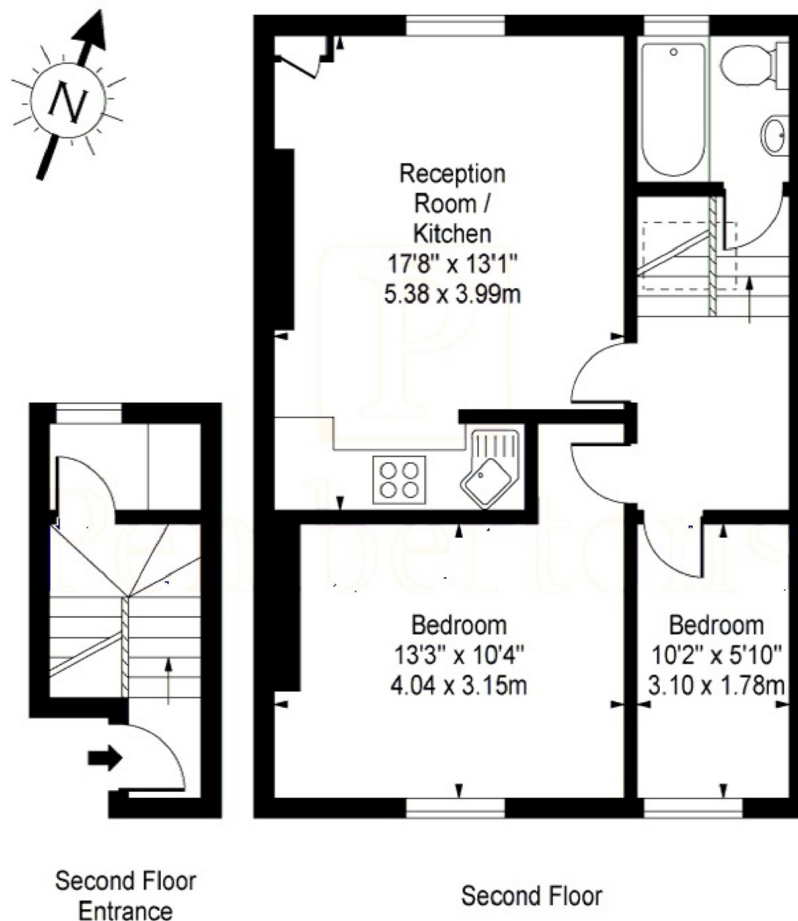
Belsize Road is within walking distance to Swiss Cottage tube station, South Hampstead overground and the high streets of Finchley Road and Kilburn High Road.

Features

- Period conversion
- Recently refurbished
- Top floor apartment
- Two bedroom
- Period features
- Great location

Belsize Road,
London, NW6

Belsize Road, South Hampstead, NW6 4BG



Approx Gross Internal Area **625 Sq Ft - 58.06 Sq M**

For Illustration Purposes Only - Not To Scale

Floor plan by www.nogaphotostudio.com

Ref. No. 649

Contact

To arrange a viewing call our office on the number below or visit our website.



Energy Rating: C. We aim to make our particulars both accurate and reliable. However they are not guaranteed; nor do they form part of an offer or contract. If you require clarification on any points then please contact us, especially if you're traveling some distance to view. Please note that appliances and heating systems have not been tested and therefore no warranties can be given as to their good working order.