

Frank Harris & Co.



Boss Street, SE1

£3,200 Per week

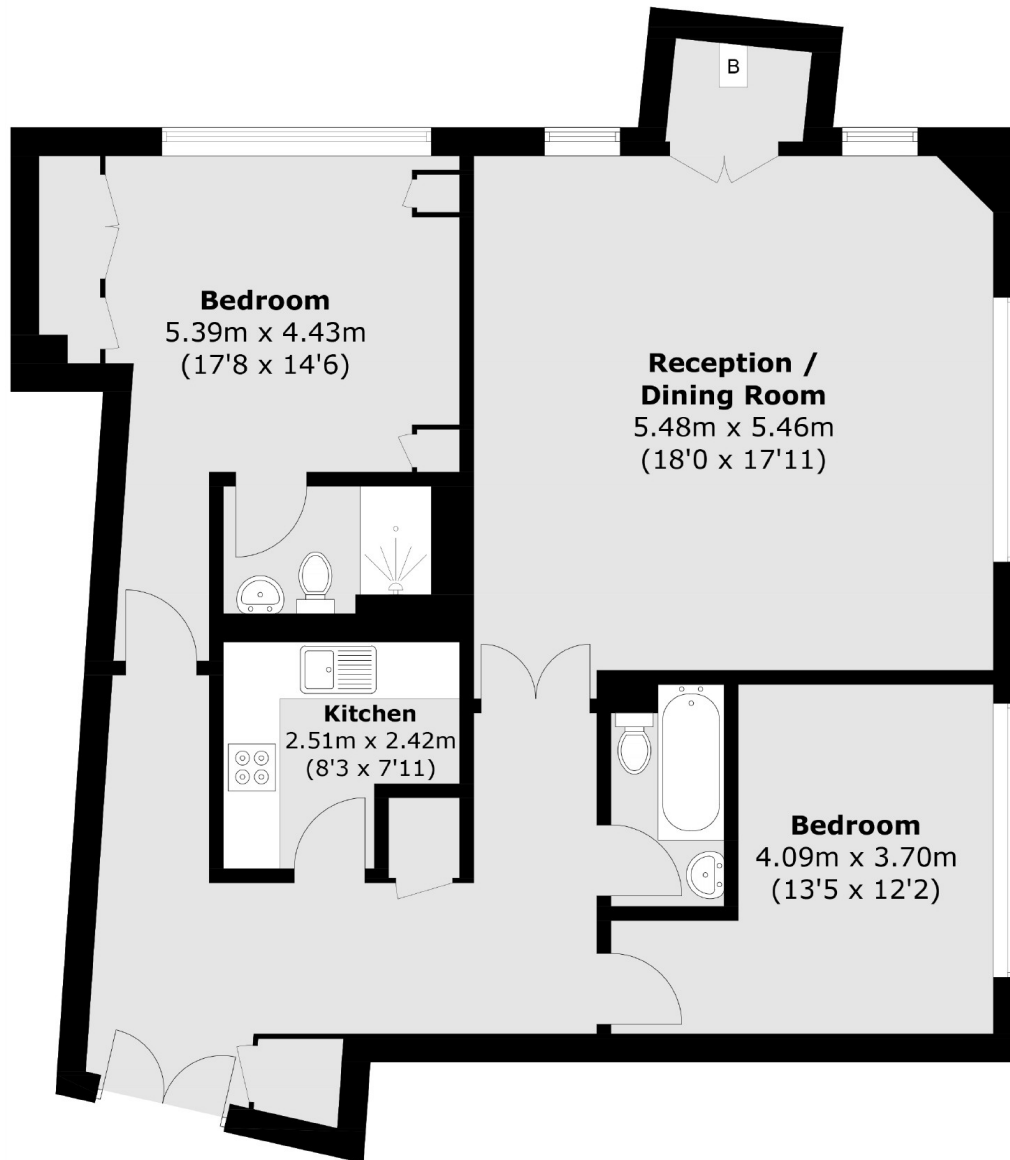
A large well presented two bedroom two bathroom apartment located in the highly sought after warehouse conversion development Boss House.

Features of the apartment are the exposed brick throughout, the abundance of natural light in the living/dining area. Private balcony and a unique feature is the air conditioning in both bedrooms and living area.

The apartment is just over 990 sq ft offering plenty of space for a couple, a growing family or two sharers.

Primary bedroom features a good size built-in wardrobe along with an en-suite bathroom, Second bedroom is a good size double, which could be used as a work from home office or Nursery.

Frank Harris & Co.



Total area (approx.): 92.3 sq. m (993.5 sq. ft)

Frank Harris & Co. Tower Bridge
205 Tooley Street, London, SE1
2JX
020 7234 0880
towerbridgelettings@frankharris.co.uk

Energy Rating: C. We aim to make our particulars both accurate and reliable. However they are not guaranteed; nor do they form part of an offer or contract. If you require clarification on any points then please contact us, especially if you're traveling some distance to view. Please note that appliances and heating systems have not been tested and therefore no warranties can be given as to their good working order.

