

Frank Harris & Co.



Meridian Point, SE8

£2,250 pcm

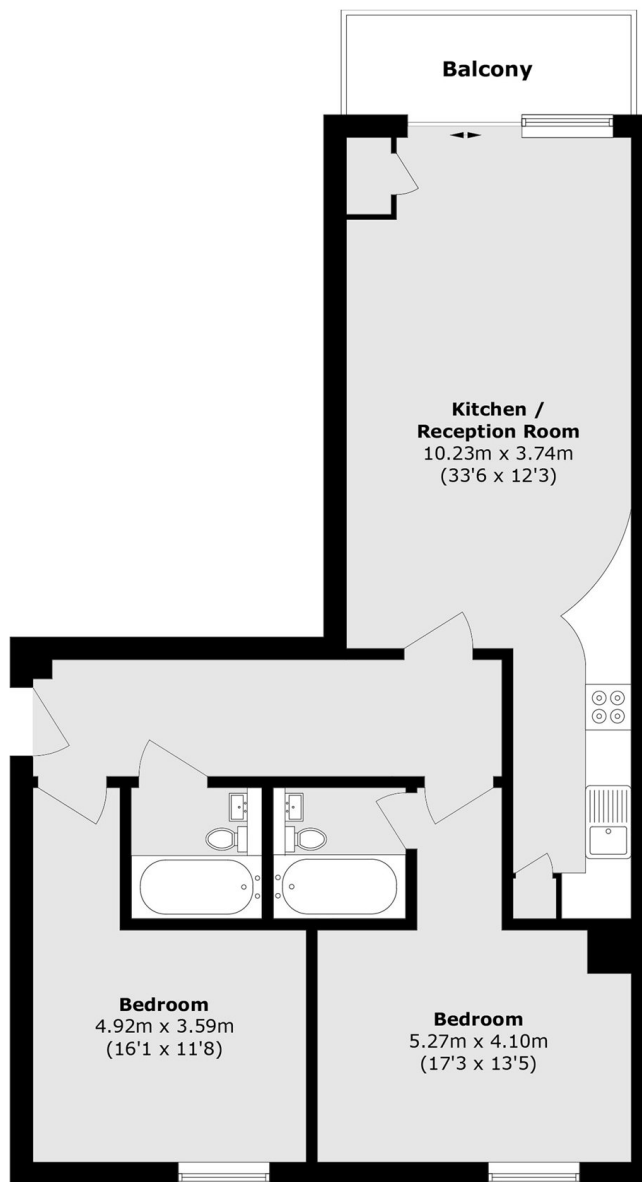
An immaculate two bedroom property on the second floor in Meridian Point. Newly refurbished throughout, this property has a spacious open plan reception with wood floors, kitchen with built-in appliances, two double bedrooms, two bathrooms, a private balcony and is offered unfurnished.

Situated a short walk away from Greenwich with an array of restaurants and boutique shops.

- Two Double Bedrooms • Two Bathrooms • Unfurnished •
- Newly Refurbished • Private Balcony • Great Location •

Frank Harris

& Co.



Total area (approx.): 77.5 sq. m (834.2 sq. ft)

Balcony area (approx.): 4.9 sq. m (52.7 sq. ft)

Frank Harris & Co. Tower Bridge
205 Tooley Street, London, SE1
2JX
020 7234 0880
towerbridgelettings@frankharris.co.uk

Energy Rating: B. We aim to make our particulars both accurate and reliable. However they are not guaranteed; nor do they form part of an offer or contract. If you require clarification on any points then please contact us, especially if you're traveling some distance to view. Please note that appliances and heating systems have not been tested and therefore no warranties can be given as to their good working order.

