

Frank Harris — & Co. —



Tanner Street, SE1

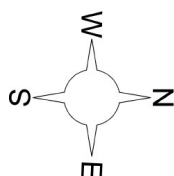
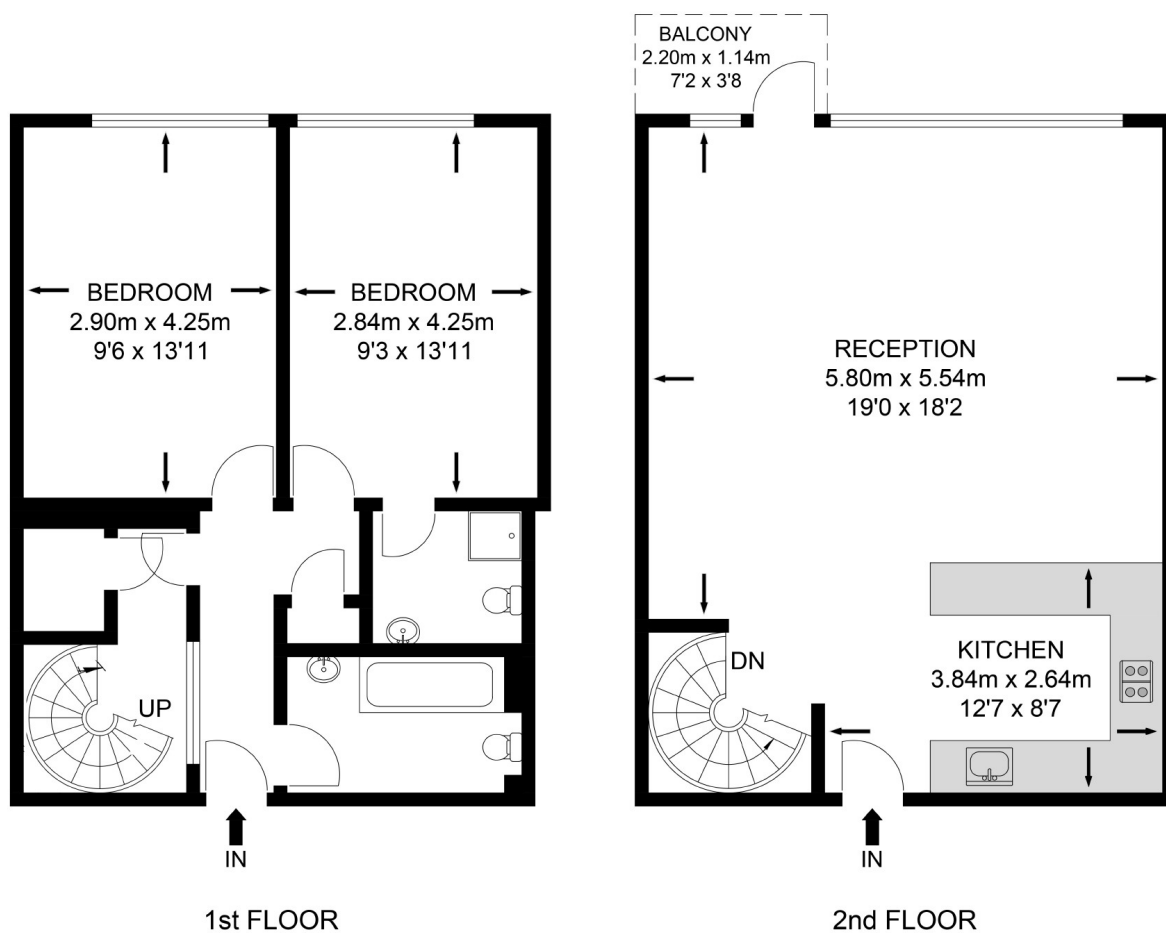
£2,700 pcm

Two bedroom two bathroom duplex apartment within Florin Court. The property boasts almost 1,000sqft of internal space and is immaculately presented throughout with secure parking and private balcony.

- Two Bedroom Apartment • Two Bathrooms • Furnished •
- Secure Parking Available • Duplex Apartment • Porter Service •

Frank Harris & Co.

Florin Court



APPROX. FLOOR AREA
INC. BALCONY
91.78 SQ.M.
(987.92 SQ.FT.)

APPROX. LIVING AREA
89.27 SQ.M.
(960.89 SQ.FT.)

Whilst every attempt has been made to ensure the accuracy of the floor plan contained here, measurements of doors, windows, rooms and any other items are approximates and no responsibility is taken for any error, omission or mis-statement. this plan is for illustrative purposes only and should be used as such by any prospective purchaser. the service, system and appliances shown have not been tested and no guarantee as to their operability or efficiency can be given.

Frank Harris & Co. Tower Bridge & Bermondsey
205 Tooley Street, London,
SE1 2JX
020 7234 0880
towerbridgelettings@frankharris.co.uk

Energy Rating: . We aim to make our particulars both accurate and reliable. However they are not guaranteed; nor do they form part of an offer or contract. If you require clarification on any points then please contact us, especially if you're traveling some distance to view. Please note that appliances and heating systems have not been tested and therefore no warranties can be given as to their good working order.

