

# Frank Harris & Co.



**Admirals Gate, SE10**

**£5,450 pcm**

A unique five bedroom detached house located on a private gated road in West Greenwich. This immaculate home extends over 2000 sq/ft of living space and is arranged over two floors with a large private rear garden and two parking spaces.



The ground floor consists of a large reception with wood floors, modern kitchen with integrated appliances and breakfast bar leading to the private garden, and a separate dining area along with utility room.

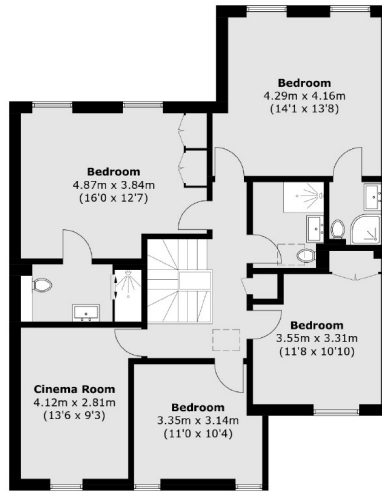
The first floor offers five double bedrooms, two rooms have en-suite bathrooms as well as a greatly finished family bathroom.

Situated moments away from Greenwich with a selection of restaurants and boutique shops. Greenwich DLR and Greenwich Mainland, are the closest stations offering easy access to Canary Wharf, the City and West End.

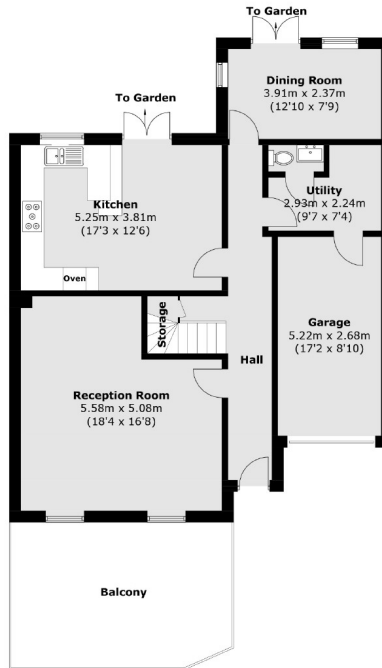
- Five Double Bedrooms • Three Bathrooms • Over 2000 sq/ft •
- Furnished • Large Garden • Private Gated Road •



# Frank Harris & Co.



First Floor



Ground Floor

Total area (approx.): 188.9 sq. m (2,033.3 sq. ft)  
Balcony: 21.5 sq. m (231.4 sq. ft)

Frank Harris & Co. Tower Bridge & Bermondsey

205 Tooley Street, London,

SE1 2JX

020 7234 0880

[towerbridgelettings@frankharris.co.uk](mailto:towerbridgelettings@frankharris.co.uk)

Energy Rating: . We aim to make our particulars both accurate and reliable. However they are not guaranteed; nor do they form part of an offer or contract. If you require clarification on any points then please contact us, especially if you're traveling some distance to view. Please note that appliances and heating systems have not been tested and therefore no warranties can be given as to their good working order.