

# Frank Harris & Co.



**Magdalen Street, SE1**

**£3,000 pcm**

This stunning two bedroom, two bathroom, 830 sq ft lateral apartment is situated in the unique development of Lion Court. The entrance leads through to an open plan reception room and kitchen with all modern integrated appliances and a Juliette balcony.



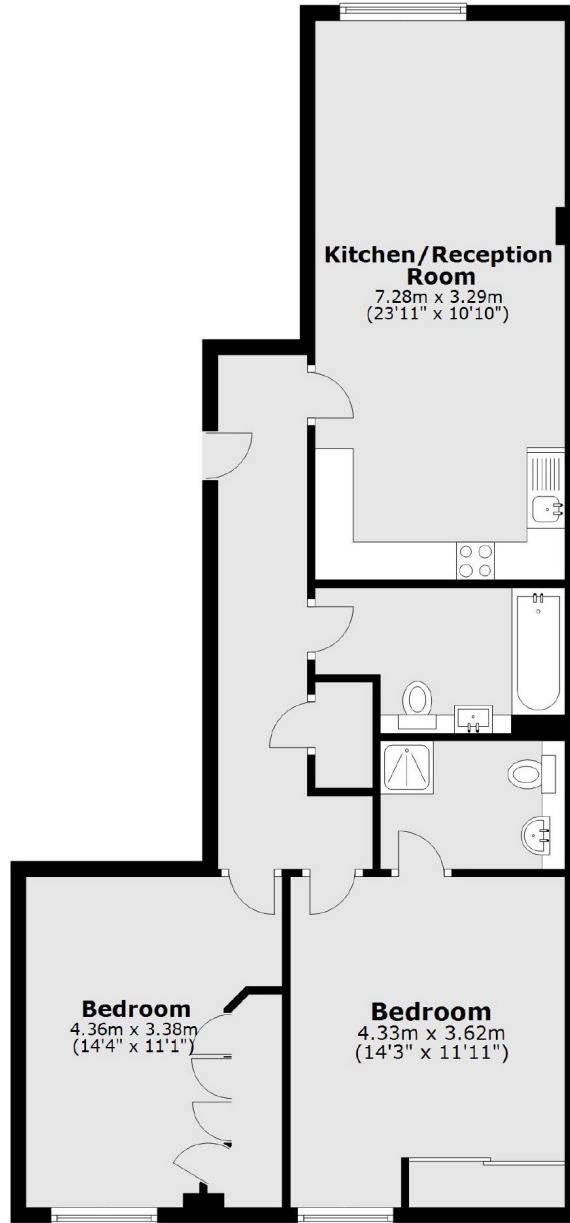
The master bedroom has an en-suite bathroom and both bedrooms have large custom-fitted wardrobes. The property benefits from a communal garden and comes with one secure off-street car parking space

This secure entry development is moments from London Bridge station and all the local amenities of vibrant Bermondsey Street. Situated directly between London Bridge and Tower Bridge, the property is walking distance from The Shard, Shad Thames and the riverside dining at More London and Butlers Wharf.

- Two bedrooms • Two Bathrooms • Communal Garden •
- Secure Parking • Wood Floors • Furnished •



# Frank Harris & Co.



Total area: approx. 76.8 sq. metres (827.1 sq. feet)

Frank Harris & Co. Tower Bridge & Bermondsey

205 Tooley Street, London,

SE1 2JX

020 7234 0880

[towerbridgelettings@frankharris.co.uk](mailto:towerbridgelettings@frankharris.co.uk)

Energy Rating: . We aim to make our particulars both accurate and reliable. However they are not guaranteed; nor do they form part of an offer or contract. If you require clarification on any points then please contact us, especially if you're traveling some distance to view. Please note that appliances and heating systems have not been tested and therefore no warranties can be given as to their good working order.