

Frank Harris & Co.



Canada Water, SE16

£530 Per week

Two bedroom two bathroom apartment located on the banks of the River Thames with views of both the River and Durand's Wharf. The apartment also has a private balcony, secure underground parking and access to a communal tennis court.

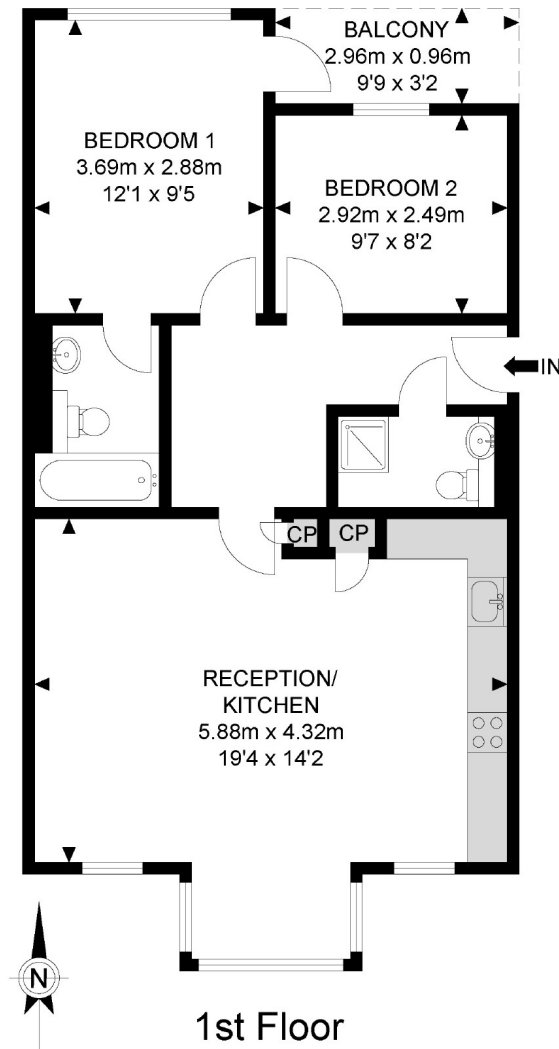


Hamsworth Quay in Rotherhithe was where the Daily Mail and Evening Standard printed their newspapers from 1989 to 2012. James Bond film Tomorrow Never Dies also filmed a scene at this venue.

- Two Double Bedrooms • Two Bathrooms • Open Plan Reception •
- Private Balcony • Secure Parking • Recently Refurbished •



Tivoli Court



APPROX. GROSS INTERNAL FLOOR AREA 665.20 SQ FT / 61.80 SQM
APPROX. GROSS EXTERNAL FLOOR AREA 39.82 SQ FT / 3.70 SQM

Whilst every attempt has been made to ensure the accuracy of the floor plan contained here, measurements of doors, windows, rooms and any other items are approximates and no responsibility is taken for any error, omission or mis-statement. This plan is for illustrative purposes only and should be used as such by any prospective purchaser. The service, system and appliances shown have not been tested and no guarantee as to their operability or efficiency can be given.

© SpacePhoto

Photography and Floor Plan

Frank Harris & Co. Tower Bridge & Bermondsey

205 Tooley Street, London,

SE1 2JX

020 7234 0880

towerbridgelettings@frankharris.co.uk

Energy Rating: C. We aim to make our particulars both accurate and reliable. However they are not guaranteed; nor do they form part of an offer or contract. If you require clarification on any points then please contact us, especially if you're traveling some distance to view. Please note that appliances and heating systems have not been tested and therefore no warranties can be given as to their good working order.