



## THE CAMBRIDGE GATEFORD PLACE

WORKSOP, S81 8AG

**£420,000**  
**FREEHOLD**

This exceptional new-build three-bedroom detached bungalow offers the perfect blend of contemporary style, luxurious specification and effortless single-storey living. Designed for modern lifestyles, the property features a spacious living room and an impressive open-plan kitchen/living/dining area, complete with a sleek German-designed kitchen and high-spec Bosch appliances. Bi-fold doors open onto a generous landscaped rear garden, creating a seamless indoor-outdoor flow. The bungalow includes a well-planned utility room, an elegant ensuite shower room to the master bedroom, and a modern four-piece family bathroom. Comfort and efficiency are prioritised with underfloor heating, PV solar panels, an EV charging point, a Ring doorbell and a fitted alarm system. Externally, the property benefits from an extensive block-paved driveway providing ample parking, along with a double garage offering power, lighting and electric doors. With its premium specification, outstanding energy performance (EPC rating A), and stylish interior design, this superb home is ideal for those seeking luxurious and efficient modern single-storey living.

**Kendra  
Jacob**

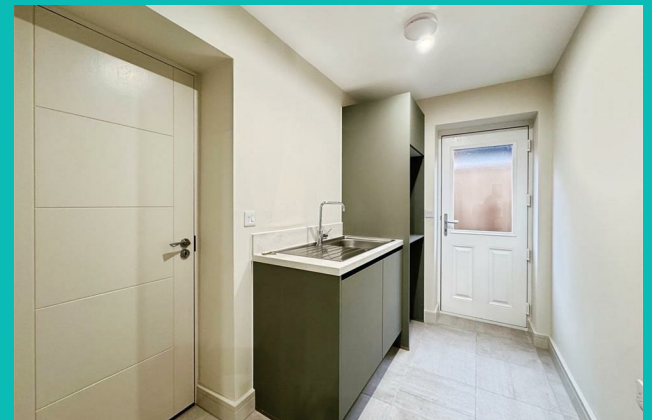
Powered by  
  
JBS Estates

# THE CAMBRIDGE GATEFORD

- New-build three-bedroom detached bungalow offering modern single-storey living.
- Spacious living room and an impressive open-plan kitchen/living/dining area.
- German-designed kitchen with high-spec Bosch appliances.
- Bi-fold doors leading to a generous landscaped rear garden.
- Utility room, ensuite shower room, and luxurious four-piece family bathroom.
- Underfloor heating throughout for comfort and efficiency.
- PV solar panels and EV charging point for energy-efficient living.
- Ring doorbell and alarm system included for added security.
- Extensive block-paved driveway and double garage with electric doors.
- EPC Rating A, highlighting excellent energy performance.



# THE CAMBRIDGE GATEFORD









# THE CAMBRIDGE GATEFORD

## ADDITIONAL INFORMATION

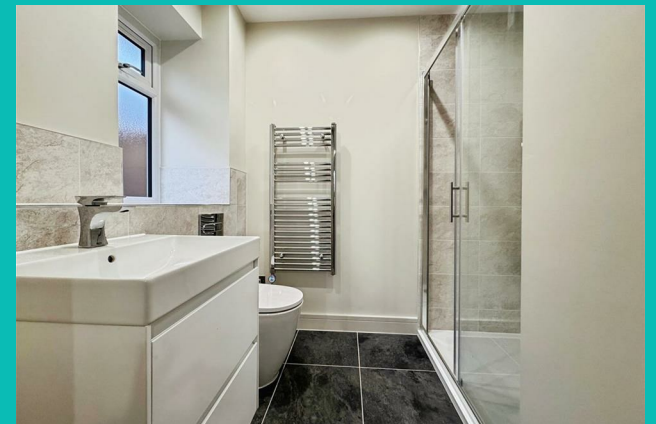
**Local Authority** – Bassetlaw

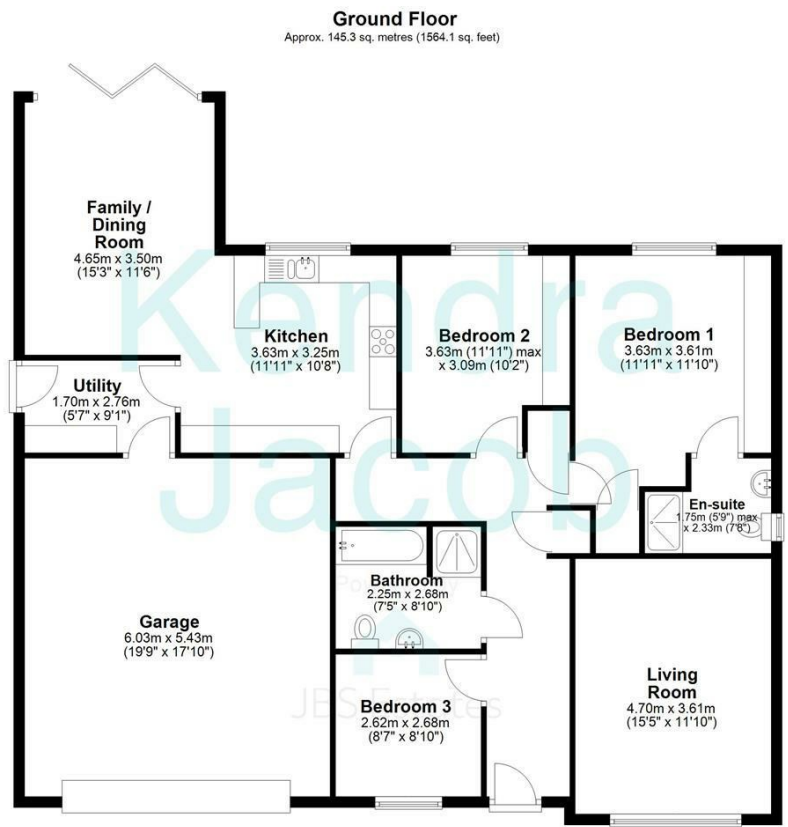
**Council Tax** – Band

**Viewings** – By Appointment Only

**Floor Area** – 1564.00 sq ft

**Tenure** – Freehold





Total area: approx. 145.3 sq. metres (1564.1 sq. feet)

The floorplans provided are for illustrative purposes only and may not represent the exact scale, dimensions, or specifications of the property. Measurements are approximate and should not be relied upon for any legal or financial decisions. It is the responsibility of the buyer, tenant, or their representatives to verify the accuracy of the details provided herein. For exact measurements, professional advice, or any other clarifications, please consult a licensed surveyor or property expert.

Plan produced using PlanUp.



Energy Efficiency Rating		
	Current	Potential
Very energy efficient - lower running costs		
(92 plus) <b>A</b>		
(81-91) <b>B</b>		
(69-80) <b>C</b>		
(55-68) <b>D</b>		
(39-54) <b>E</b>		
(21-38) <b>F</b>		
(1-20) <b>G</b>		
Not energy efficient - higher running costs		
<b>England &amp; Wales</b>	EU Directive 2002/91/EC	

Agents Note: Whilst every care has been taken to prepare these particulars, they are for guidance purposes only. All measurements are approximate and are for general guidance purposes only and whilst every care has been taken to ensure their accuracy, they should not be relied upon and potential buyers/tenants are advised to recheck the measurements

Kendra Jacob Estate Agents  
Six Oaks Grove  
Retford  
DN220RJ

01909 492 116  
Kendrajacob@jbs-estates.com

Kendra  
Jacob

Powered by  
  
JBS Estates