



10 HALL DRIVE WORKSOP, S80 3GB

£430,000
FREEHOLD

GUIDE PRICE £430,000 - £450,000

An executive-style detached family home situated in the highly sought-after area of Watermeadows, this immaculately presented and extended five-bedroom detached property combines luxury, space, and practicality in a prime location, ideal choice for growing families.

Upon entering, you are welcomed by a spacious entrance hall leading to a stylish living room featuring a stunning media wall. The ground floor also benefits from a contemporary downstairs WC, a dedicated office/study, a versatile playroom, and an impressive extended kitchen and entertainment room, ideal for hosting and family gatherings.

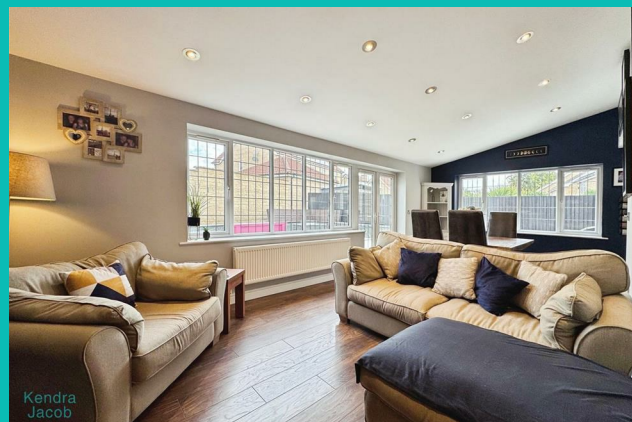
**Kendra
Jacob**

Powered by

JBS Estates

10 HALL DRIVE

- FIVE BEDROOMS • EXTENDED DETACHED PROPERTY • THREE BATHROOMS • DOWNSTAIRS WC • OFFICE ROOM • OPEN PLAN LIVING AREA • DOUBLE GARAGE • AMPLE PARKING • ENCLOSED REAR GARDEN WITH MODERN FIRE PIT • MEDIA WALL FITTED IN THE LIVING ROOM



ENTRANCE HALL

With a front facing composite door, central heating radiators, laminate flooring, understairs storage cupboard and stairs leading to the first floor accomodation.

LIVING ROOM

A generous size living room with a front facing double glazed bay window, power points and a central heating radiator. The main focal point of the room is a beautiful media wall with electric modern fire and split face tile feature wall.

DOWNSTAIRS WC

A fully tiled suite comprising of a low flush w/c, wash hand vanity unit and a chrome towel radiator.

OFFICE ROOM

With a built in desk, power points, central heating radiator and laminate flooring.

DINING ROOM/PLAYROOM

With laminate flooring, power points and a central heating radiator. This room is currently a playroom but can be also used versatile.

EXTENDED ENTERTAINMENT AREA

With rear and side facing double glazed windows, rear facing double glazed French doors, laminate flooring, spotlights to the ceiling, power points and a central heating radiator and access to the kitchen/diner. This room positioned from the playroom and kitchen all open plan, perfect for entertaining.

KITCHEN/DINER

Having a range of high and low level units in Navy blue Shaker style, black Granite worktops incorporating two stainless steel sinks with mixer tap, Integrated dishwasher, Ranger Master cooker, plumbing for a washing machine and space for a tumble dryer. Splashback tiles in white, spotlights to the ceiling, central heating radiator. A centre island with Integrated microwave. A rear facing double glazed window, a side facing access door and access into the garage.

FIRST FLOOR- LANDING

A Gallery landing with loft access, storage cupboard and a front facing double glazed window.

BEDROOM ONE

With a rear facing double glazed window, built in double wardrobes to one side of the wall, power points, a central heating radiator, Air con unit fitted and access into the en-suite.

EN SUITE

A Modern three piece suite comprising of a panelled bath Rainfall shower over, wash hand vanity unit, low flush w/c, fully tiled, shaver points, chrome towel radiator and a side facing double glazed obscure window.

BEDROOM TWO

With a rear facing double glazed window, power points, central heating radiator, built in wardrobe to one side of the wall and access into the en-suite.

EN SUITE

A three piece suite comprising of a shower enclosure, pedestal sink, low flush w/c, partly tiled and a side facing double glazed obscure window.

BEDROOM THREE

With a front facing double glazed window, built in wardrobe to one side of the wall, power points and a central heating radiator.

BEDROOM FOUR

With a rear facing double glazed window, built in wardrobe to one side of the wall, power points and a central heating radiator. This room is currently used as a dressing room.

BEDROOM FIVE

With a front facing double glazed window, power points, central heating radiator and a beautiful feature tree with lighting.

FAMILY BATHROOM

A three piece suite comprising of a panelled bath shower over, pedestal sink, low flush w/c, chrome towel radiator, spotlights to the ceiling and a front facing double glazed obscure window.

DOUBLE GARAGE

With up and over doors, power and lighting. Wall mounted central heating boiler and a rear access door into the property.

EXTERNAL

To the front of the property is a shared access with a block paved driveway giving parking for 5-6 cars and graveled

area with a concrete built bin store.

To the side of the property gives you access to the rear garden that offers a stunning porcelain patio area with seating with split face tile and fire pit table. External power points, outside tap and a lawn area.

10 HALL DRIVE





10 HALL DRIVE

ADDITIONAL INFORMATION

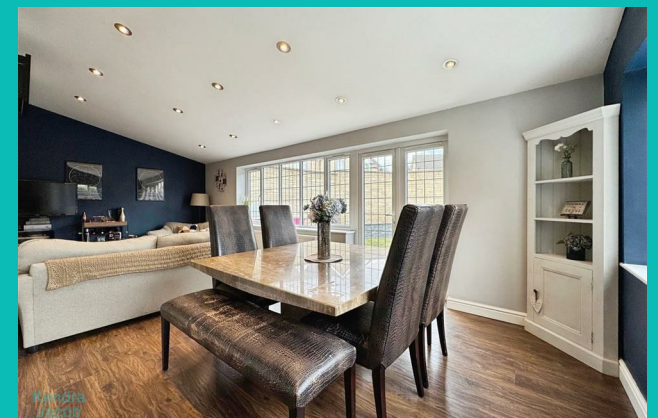
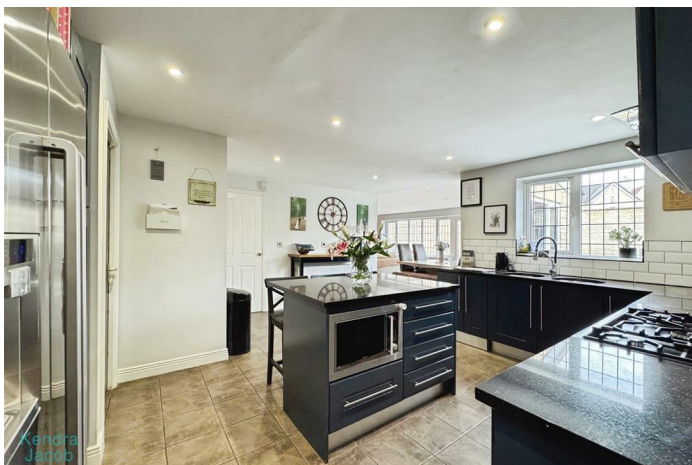
Local Authority – Bassetlaw

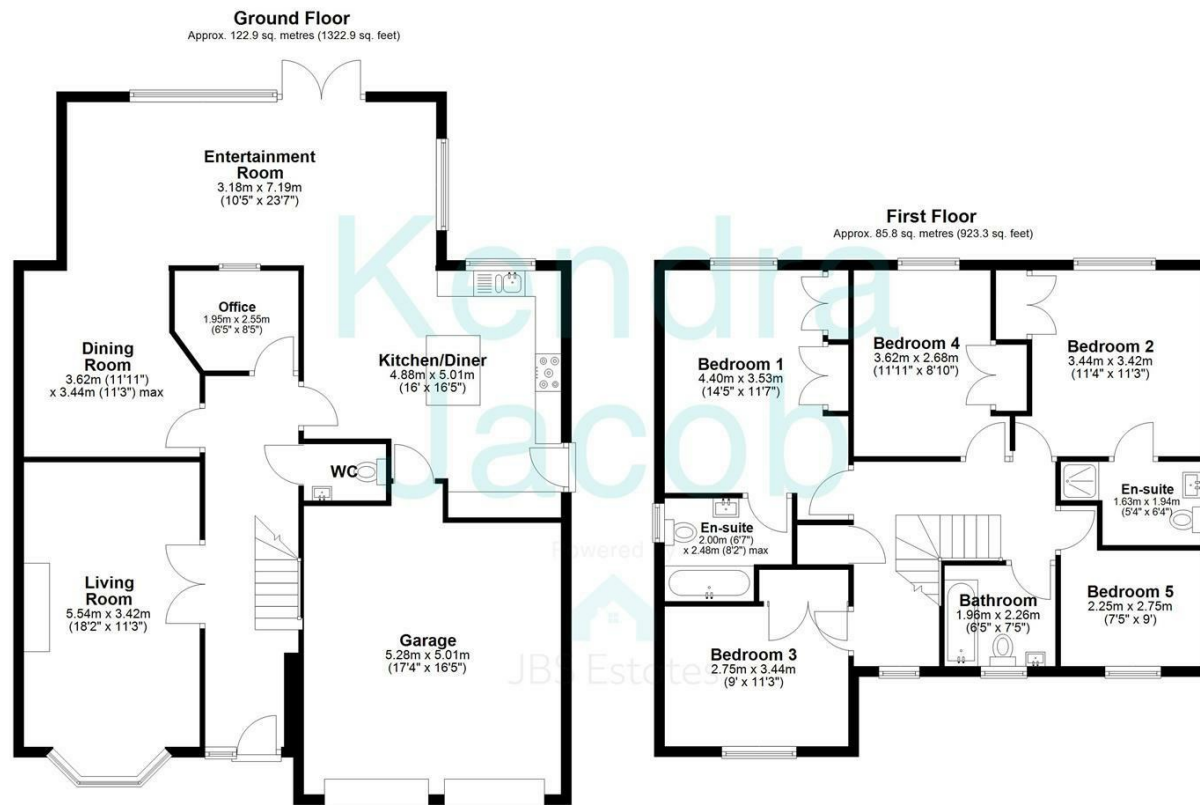
Council Tax – Band F

Viewings – By Appointment Only

Floor Area – 2246.20 sq ft

Tenure – Freehold

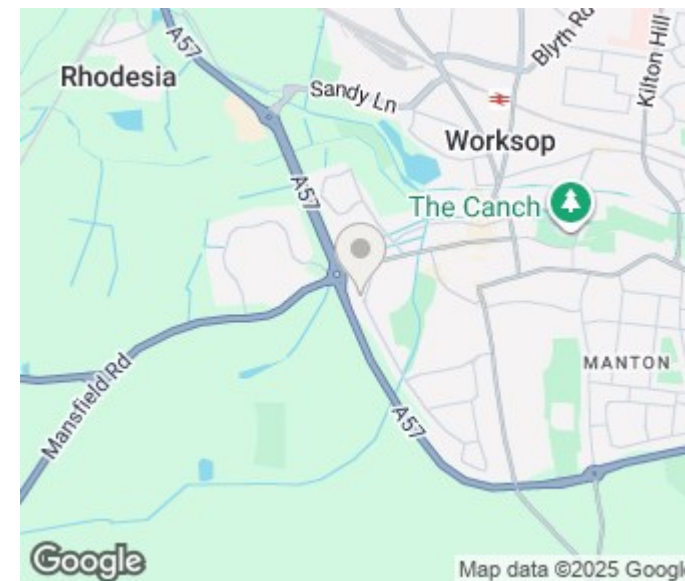




Total area: approx. 208.7 sq. metres (2246.2 sq. feet)

The floorplans provided are for illustrative purposes only and may not represent the exact scale, dimensions, or specifications of the property. Measurements are approximate and should not be relied upon for any legal or financial decisions. It is the responsibility of the buyer, tenant, or their representatives to verify the accuracy of the details provided herein. For exact measurements, professional advice, or any other clarifications, please consult a licensed surveyor or property expert.

Plan produced using PlanUp.



Energy Efficiency Rating		
	Current	Potential
Very energy efficient - lower running costs		
(92 plus) A		
(81-91) B		
(69-80) C	78	81
(55-68) D		
(39-54) E		
(21-38) F		
(1-20) G		
Not energy efficient - higher running costs		
England & Wales		EU Directive 2002/91/EC

Agents Note: Whilst every care has been taken to prepare these particulars, they are for guidance purposes only. All measurements are approximate and are for general guidance purposes only and whilst every care has been taken to ensure their accuracy, they should not be relied upon and potential buyers/tenants are advised to recheck the measurements

Kendra Jacob Estate Agents
Six Oaks Grove
Retford
DN220RJ

01909 492 116
Kendrajacob@jbs-estates.com

Kendra
Jacob

Powered by
JBS Estates