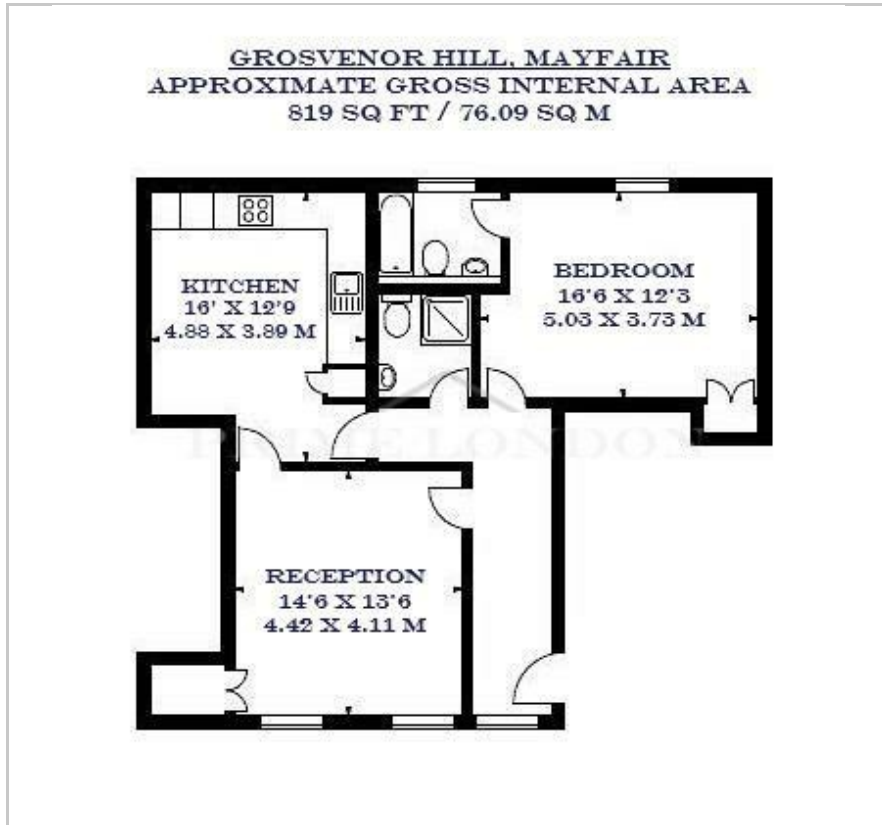




9 Grosvenor Hill
Mayfair, London, W1K 3QA
£1,260 Per Week

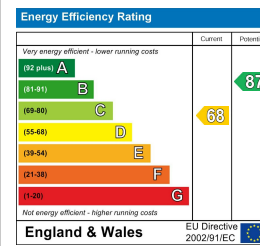
Floor Plan



Area Map



Energy Efficiency Graph



Viewing

By appointment. Contact us on 0207 052 1075 if you wish to arrange a viewing appointment for this property, or require further information.

- One bedroom, two bathroom ▪ 819 sq ft (76.09 sq m) apartment in Mayfair
- Double bedroom featuring en-suite and ample storage ▪ Stylish dining area
- Walking distance to high end shops at New Bond Street and Selfridges ▪ Close proximity to Bond Street, Oxford Circus and Green Park stations

A spacious one bedroom, two bathroom apartment, located in a sought after building on Grosvenor Hill in Mayfair, is available for lease through Prime London.

Totalling 819 sq ft (76.09 sq m), this property comprises one generously sized double bedroom with en suite bathroom, an additional modern shower room, reception room and a kitchen complete with a stylish dining area.

Grosvenor Hill is excellently located close to the high-end shops and restaurants that Mayfair and the West End have to offer, including New Bond Street and Selfridges.

For transport, Grosvenor Hill is located under 0.3 miles to Bond Street and Oxford Circus underground stations, and 0.5 miles to Green Park station, offering access to the Elizabeth, Jubilee, Piccadilly, Central and Victoria Lines.



These particulars, whilst believed to be accurate are set out as a general outline only for guidance and do not constitute any part of an offer or contract. Intending purchasers should not rely on them as statements of representation of fact, but must satisfy themselves by inspection or otherwise as to their accuracy. No person in this firm's employment has the authority to make or give any representation or warranty in respect of the property.