



Barrington Court

124 Wilton Road, Victoria, SW1V 1AJ

£784 Per Week



3



3

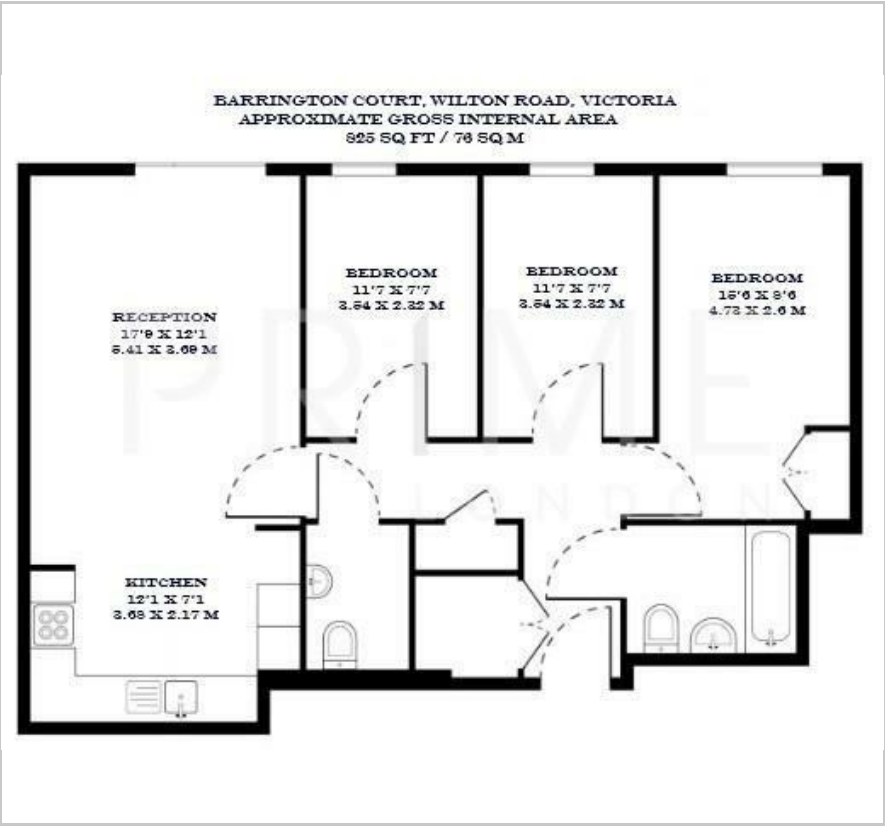


1



B

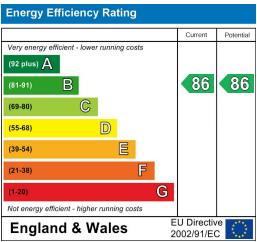
Floor Plan



Area Map



Energy Efficiency Graph



Viewing

By appointment. Contact us on 0207 052 1075 if you wish to arrange a viewing appointment for this property, or require further information.

- Three bedroom apartment
- 825 sq ft (76 sqm)
- Ample storage throughout
- Walking distance to cafes, shops and restaurants
- Near to Victoria station
- Furnished



This spacious three bedroom apartment, situated in a modern purpose built building in Victoria, is available for lease through Prime London.

Beautifully presented throughout, the property comprises 825 sq ft (76 sqm) of living space, and offers a generous open plan living and dining area with a fully fitted kitchen, a large principal bedroom with fitted wardrobes, two further double bedrooms, a contemporary family bathroom, and an additional separate WC.

The apartment benefits from excellent natural light and a well proportioned layout, making it ideal for both comfortable living.

Located moments from Victoria, convenient access to transportation is provided by the Circle & District Lines, Victoria Line, and mainline rail services at Victoria station.

Barrington Court's prime location is nearby coffee shops and restaurants as well as to some of London's most iconic landmarks, including Buckingham Palace, Westminster Cathedral, and the Houses of Parliament.



These particulars, whilst believed to be accurate are set out as a general outline only for guidance and do not constitute any part of an offer or contract. Intending purchasers should not rely on them as statements of representation of fact, but must satisfy themselves by inspection or otherwise as to their accuracy. No person in this firm's employment has the authority to make or give any representation or warranty in respect of the property.