



55 Victoria Street

Westminster, SW1H 0AF

Asking Price £525,000



0



1



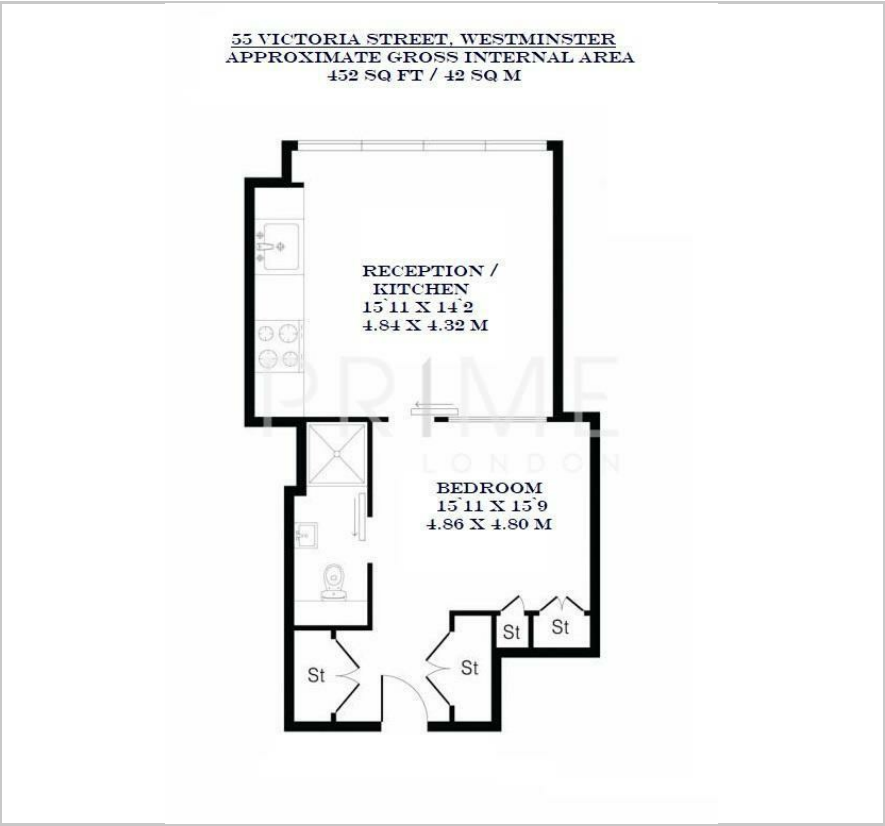
1



B



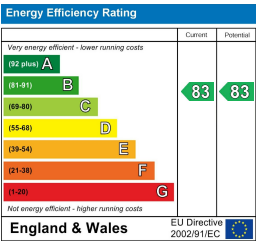
Floor Plan



Area Map



Energy Efficiency Graph



Viewing

By appointment. Contact us on 0207 052 1075 if you wish to arrange a viewing appointment for this property, or require further information.

- 452 sq ft (42 sqm)
- Chain free
- Residents' gym
- 24 hour concierge



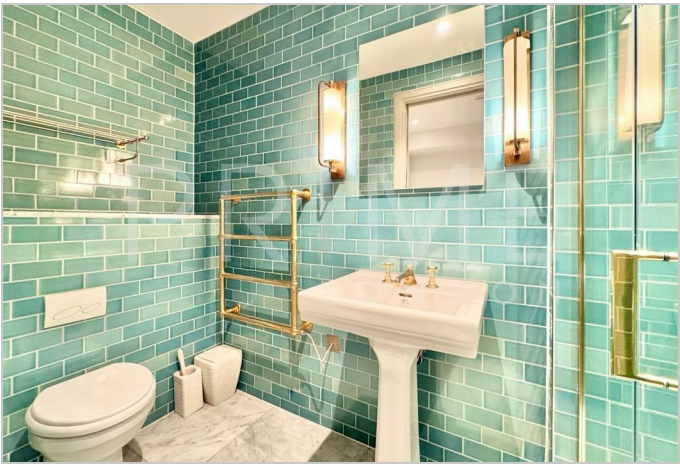
This elegantly designed apartment, featuring high specification finishes throughout and located in the prestigious 55 Victoria Street development, is available for sale through Prime London.

This 452 sq ft (42 sqm) apartment benefits from a large and well laid-out reception room with an open plan kitchen and oak wooden floors. The apartment further comprises a bedroom area with substantial en-suite bathroom.

55 Victoria Street development allows residents access to the in house gym, 24 hour concierge service and beautiful Sky Garden located on the eighth floor with stunning views. The property is excellently located within half of a mile of St James's Park and all the amenities of Westminster and Victoria.

This includes a number of restaurants, shops and some of London's most famous landmarks. For transport, St James's Park Tube Station, for the District and Circle lines and Westminster Tube Station for the Jubilee, District and Circle lines are both within half a mile of the property.

Also within a mile of the property is Victoria Station, for the Overground, Victoria, District and Circle lines. All distances quoted are approximate.



These particulars, whilst believed to be accurate are set out as a general outline only for guidance and do not constitute any part of an offer or contract. Intending purchasers should not rely on them as statements of representation of fact, but must satisfy themselves by inspection or otherwise as to their accuracy. No person in this firms employment has the authority to make or give any representation or warranty in respect of the property.