

## Principal Tower

2 Principal Place, Worship Street, EC2A 2FE

£807 Per Week



1



1



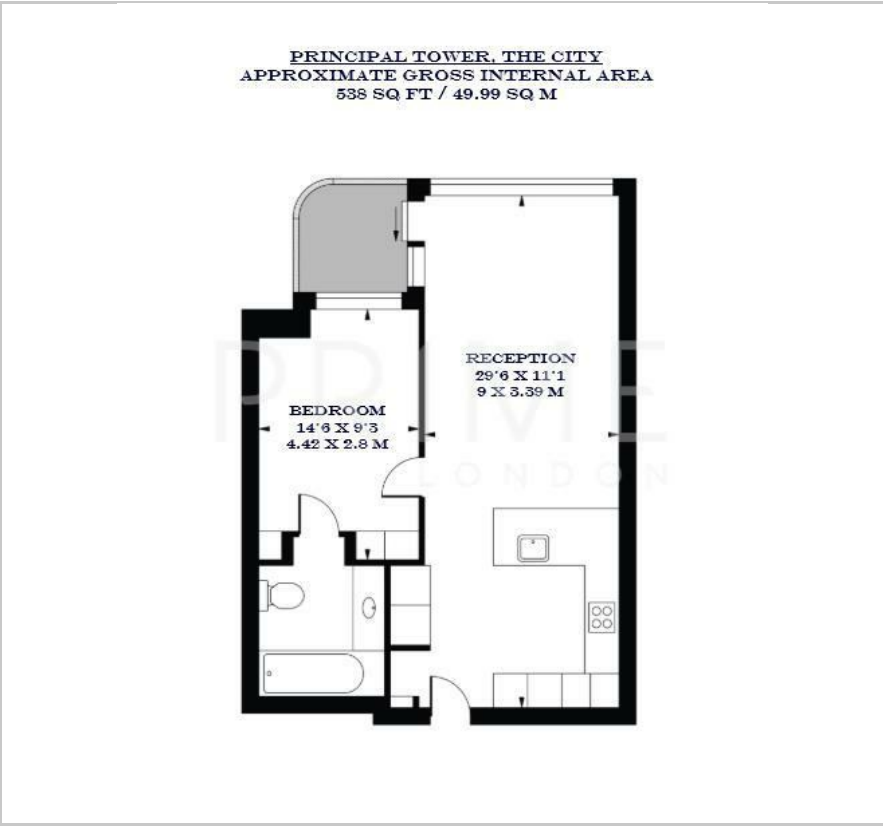
1



B



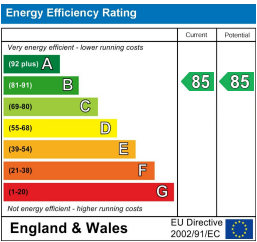
Floor Plan



Area Map



Energy Efficiency Graph



Viewing

By appointment. Contact us on 0207 052 1075 if you wish to arrange a viewing appointment for this property, or require further information.

- One bedroom apartment
- 538 sq ft (49.99 sqm)
- Sweeping views of London's skyline
- Sleek wooden flooring and floor-to-ceiling windows
- Residents' gym, pool, spa and cinema
- 24 hour concierge



This superb one bedroom apartment on the twenty-ninth floor of the iconic Principal Tower is available to rent through Prime London.

Offering 538 sq ft (49.99 sqm) of well-designed living space, the apartment features a generous double bedroom with en-suite, a contemporary open-plan living area, and a spacious private balcony with impressive views towards the City and Canary Wharf. Floor-to-ceiling windows and quality wooden flooring create a bright, modern interior throughout.

Residents benefit from world-class amenities including a fully equipped gym, spa, lap pool, private cinema, and 24 hour concierge. A range of stylish new shops, restaurants, and bars are also located on-site.

Situated between the City of London and Shoreditch, Principal Tower offers exceptional connectivity and access to both financial hubs and vibrant cultural scenes – all within easy walking distance.



These particulars, whilst believed to be accurate are set out as a general outline only for guidance and do not constitute any part of an offer or contract. Intending purchasers should not rely on them as statements of representation of fact, but must satisfy themselves by inspection or otherwise as to their accuracy. No person in this firm's employment has the authority to make or give any representation or warranty in respect of the property.