

## Stage Apartments

22 Hewett Street, Shoreditch, EC2A 3NL

£738 Per Week



1



1



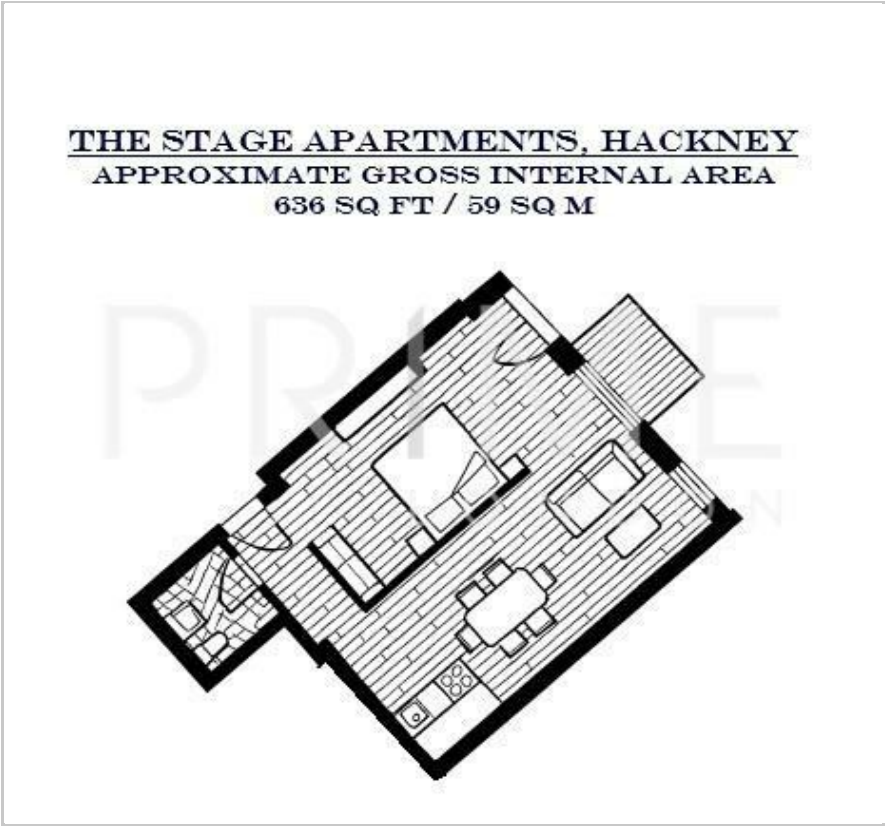
1



B



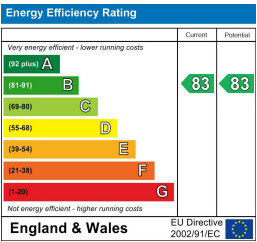
Floor Plan



Area Map



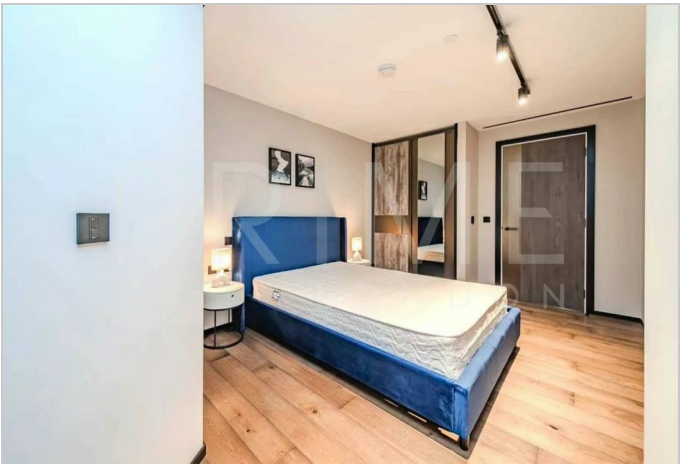
Energy Efficiency Graph



Viewing

By appointment. Contact us on 0207 052 1075 if you wish to arrange a viewing appointment for this property, or require further information.

- One bedroom apartment
- 24 hours concierge
- Gym & Spa
- 636 sq ft (59 sqm)
- Luxury Development
- Cinema & Games Room



This fully furnished 636 sq ft (59 sqm) one bedroom apartment, with fantastic City views, set within the landmark Stage development in Shoreditch, is available for lease through Prime London.

This beautifully designed home features a bright and spacious open-plan kitchen and dining area, a sophisticated reception room that opens onto a generous private balcony, a well-proportioned bedroom with fitted wardrobes, and a sleek, contemporary bathroom. Floor-to-ceiling windows throughout the apartment frame striking views across the City skyline.

Residents of The Stage enjoy access to an impressive array of five-star amenities, including a 24-hour concierge service, two private screening rooms, a residents' lounge with games area and bowling alley, and a stunning sky terrace on the 32nd floor offering panoramic vistas across London.

Located just moments from Liverpool Street Station and the new Amazon headquarters, the development is perfectly positioned for both City professionals and creatives alike. Excellent transport links are available via Liverpool Street, Shoreditch High Street, and Old Street stations, placing the entire capital within easy reach.



These particulars, whilst believed to be accurate are set out as a general outline only for guidance and do not constitute any part of an offer or contract. Intending purchasers should not rely on them as statements of representation of fact, but must satisfy themselves by inspection or otherwise as to their accuracy. No person in this firm's employment has the authority to make or give any representation or warranty in respect of the property.