

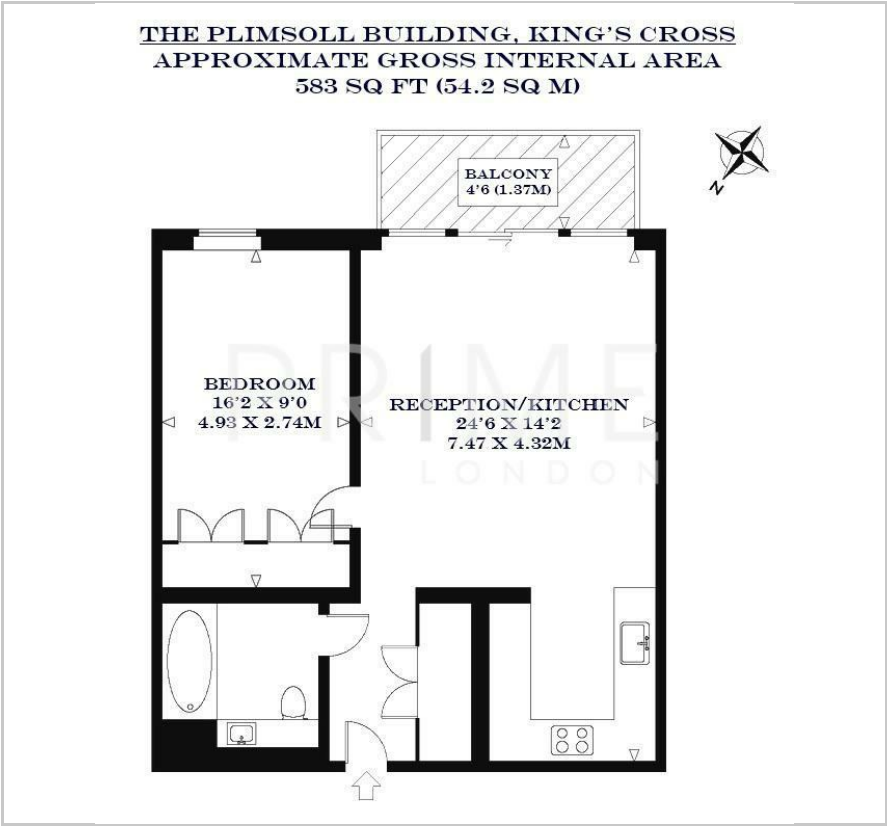
The Plimsoll Building

Handyside Street, N1C 4BR

Asking Price £735,000



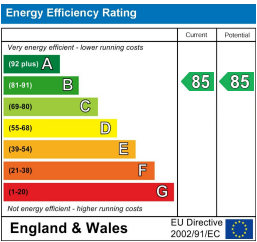
Floor Plan



Area Map



Energy Efficiency Graph



Viewing

By appointment. Contact us on 0207 052 1075 if you wish to arrange a viewing appointment for this property, or require further information.

- Luxurious one bedroom apartment ■ 568 sq ft (52.75 sqm)
- Elegant wooden floors and custom kitchen fittings ■ Residents' lounge, a rooftop conservatory, a fitness suite, a courtyard garden
- Proximity to Kings Cross St. Pancras Underground Station and National Rail ■ 24 hour concierge



This luxurious one bedroom apartment, in the prestigious Plimsoll Building in King's Cross, is available for chain free sale through Prime London.

Totalling 568 sq ft (52.75 sqm), this property comprises a spacious open-plan living area, a well-appointed bathroom, and fully equipped kitchen. The apartment showcases elegant wooden floors, custom kitchen fittings, a modern bathroom, and a seamless open-plan design.

Residents of Plimsoll Building benefit from a residents' lounge, a rooftop conservatory, a fitness suite, a courtyard garden and a 24 hour concierge.

Situated adjacent to Gasholder 8 and Lewis Cubitt Square, the Plimsoll Building offers access to a newly landscaped park and the renowned KERB street food market. Nearby Lewis Cubitt Park features the King's Cross natural swimming pond and recreational area, all within walking distance.

The Plimsoll Building boasts proximity to King's Cross St Pancras International, providing excellent national and international transport links.



These particulars, whilst believed to be accurate are set out as a general outline only for guidance and do not constitute any part of an offer or contract. Intending purchasers should not rely on them as statements of representation of fact, but must satisfy themselves by inspection or otherwise as to their accuracy. No person in this firm's employment has the authority to make or give any representation or warranty in respect of the property.