



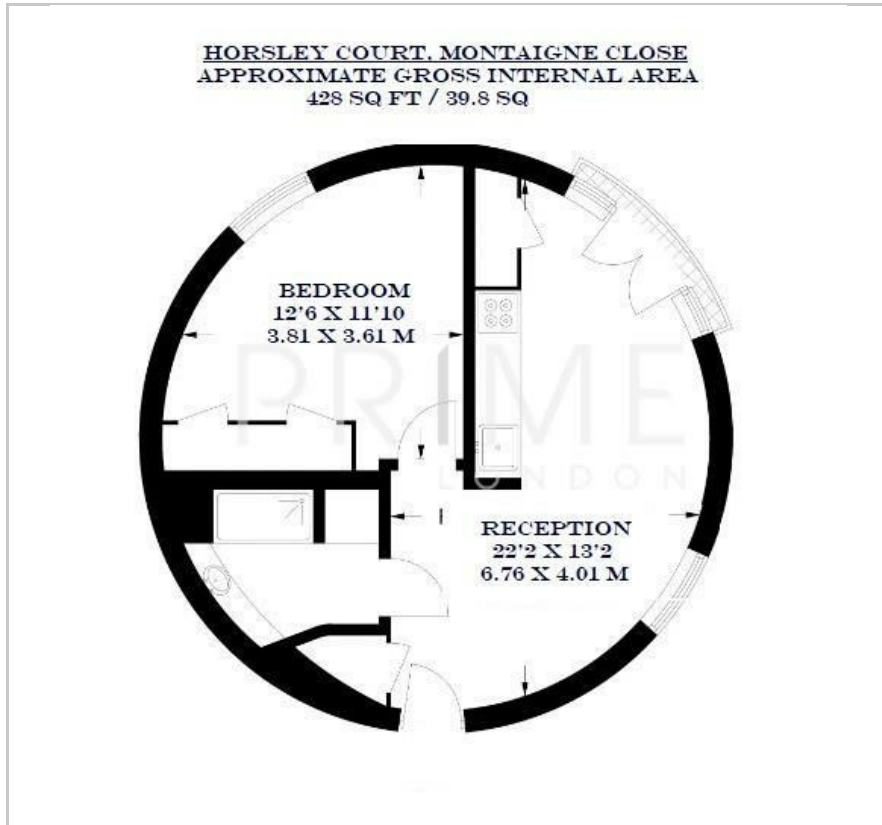
Horsley Court

Montaigne Close, Westminster, SW1P 4BF

£600 Per Week



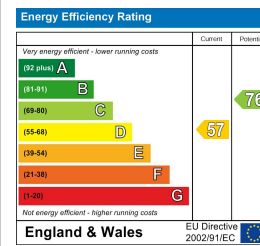
Floor Plan



Area Map



Energy Efficiency Graph



Viewing

By appointment. Contact us on 0207 052 1075 if you wish to arrange a viewing appointment for this property, or require further information.



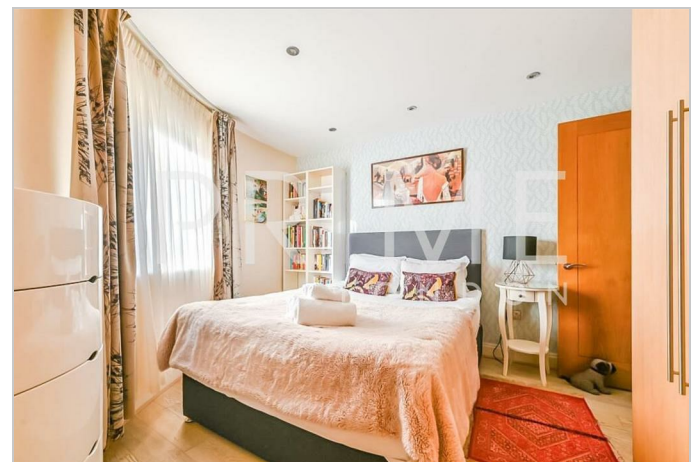
The fully furnished, 428 sq ft (40 sqm) one-bedroom apartment, situated within Horsley Court, is available for lease through Prime London.

This unique apartment, located in an exclusive gated development, offers an open-plan reception room/kitchen, an ultra-modern bathroom, and a spacious garden area.

Horsley Court is situated in the heart of Westminster, to the south of St James's Park and Victoria, and to the north of Pimlico. The property is within reach of the numerous amenities, restaurants, and shops of Victoria, Westminster, and St James. Local parklands, including Green Park and St James's Park, are easily accessible.

Transport links are convenient, with the Victoria Line (Pimlico) approximately 0.2 miles away.

Residents of Horsley Court enjoy on-site facilities, including a concierge and gym.



These particulars, whilst believed to be accurate are set out as a general outline only for guidance and do not constitute any part of an offer or contract. Intending purchasers should not rely on them as statements of representation of fact, but must satisfy themselves by inspection or otherwise as to their accuracy. No person in this firm's employment has the authority to make or give any representation or warranty in respect of the property.