



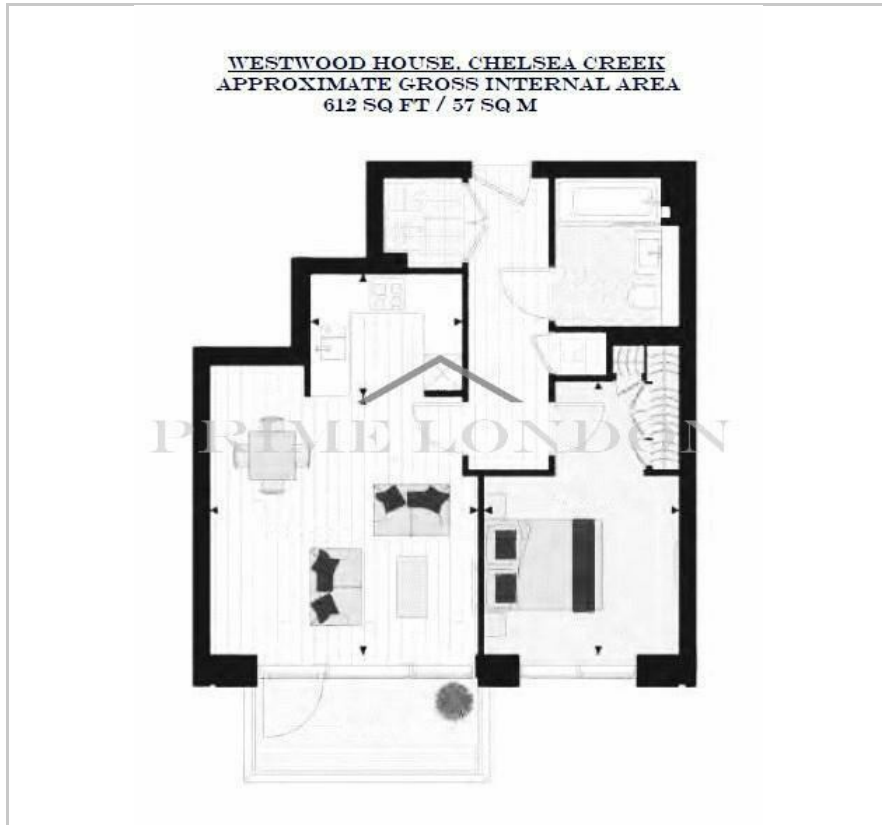
Westwood House

Chelsea Creek, SW6 2XB

Asking Price £870,000



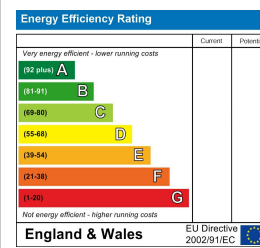
Floor Plan



Area Map



Energy Efficiency Graph



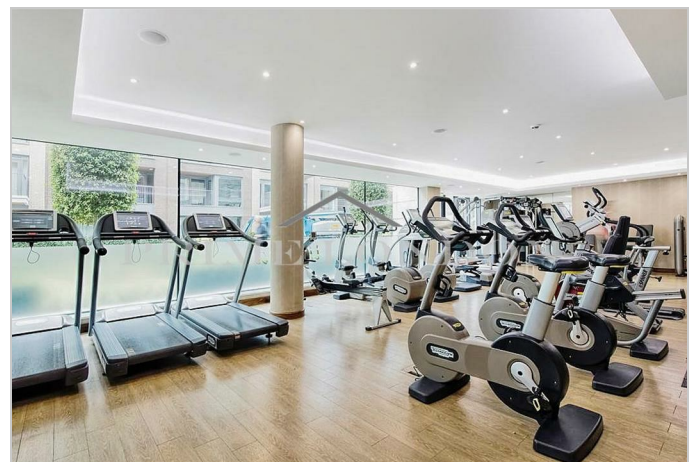
Viewing

By appointment. Contact us on 0207 052 1075 if you wish to arrange a viewing appointment for this property, or require further information.

- New one bedroom apartment ▪ 612 sq ft / 57 sq m
- Brand new property ▪ Wooden flooring and comfort cooling
- Pool, sauna, steam room, gym and treatment room ▪ 24 hour concierge



This brand new and expertly crafted one bedroom apartment, set within the extremely well received Chelsea Creek development, is available for sale through Prime London. There are a selection of other one, two and three bedroom apartments available, so do get in touch for further details. With floor to ceiling windows throughout the apartment allowing an abundance of light, the sense of space is excellent. This 612 sq ft / 57 sq m contemporary apartment benefits from having a large open plan reception and fully fitted kitchen and access to a private balcony overlooking the beautiful landscaped gardens. Through the hallway you will find a well proportioned double bedroom with a substantial built in wardrobe, and a modern family bathroom. The property also benefits from wooden flooring and comfort cooling. Residents of this exceptional address have exclusive use of The Spa, the state of the art health and fitness centre in Chelsea Creek, including an indoor swimming pool, sauna, steam room, gymnasium and treatment room. Residents will also benefit from a 24 hour concierge and an unrivalled selection of shops, bars, restaurants, leisure facilities and beautiful landscaped courtyards and tree-lined avenues. Located on the north bank of the River Thames adjacent to Chelsea Harbour and close to the shops and restaurants of Fulham and Chelsea. The Imperial Wharf rail station provides quick links to Clapham Junction, Shepherds Bush (for the Central line), Fulham Broadway underground station is only 0.7 mile away. The river taxi services are available from Chelsea Harbour Pier which is located just a 14 minutes' walk away. There are regular bus services running just outside the development. All times and distances are approximate. *Images are of show flat or computer generated and are only intended to show example finishes of the property once complete



These particulars, whilst believed to be accurate are set out as a general outline only for guidance and do not constitute any part of an offer or contract. Intending purchasers should not rely on them as statements of representation of fact, but must satisfy themselves by inspection or otherwise as to their accuracy. No person in this firm's employment has the authority to make or give any representation or warranty in respect of the property.