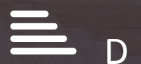




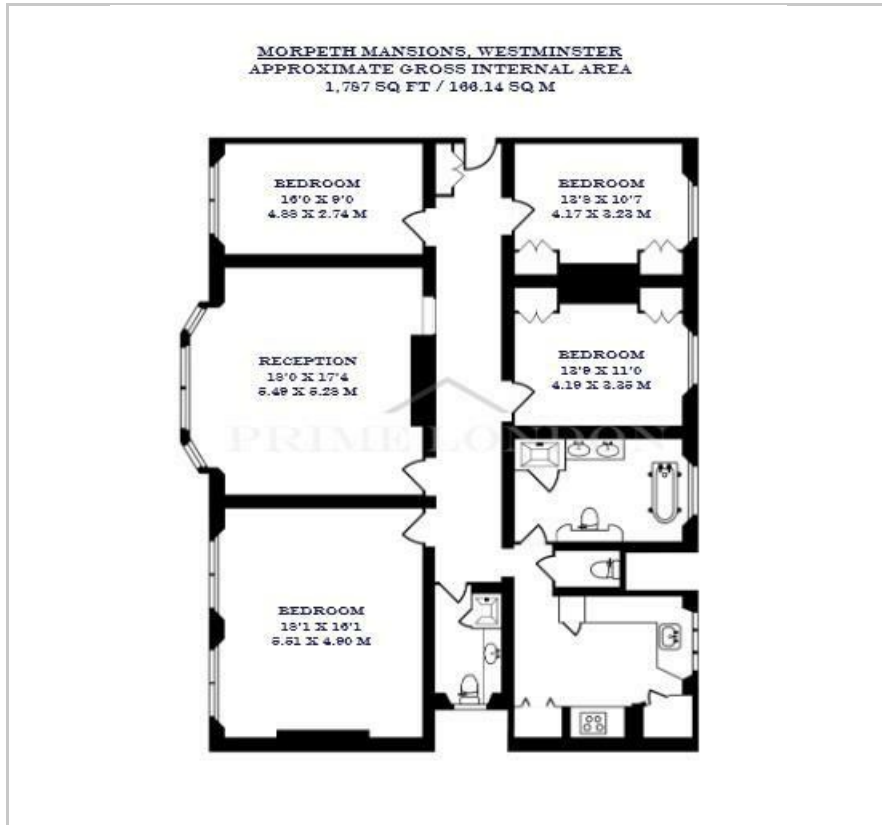
Morpeth Mansions

Morpeth Terrace, Westminster, SW1P 1ER

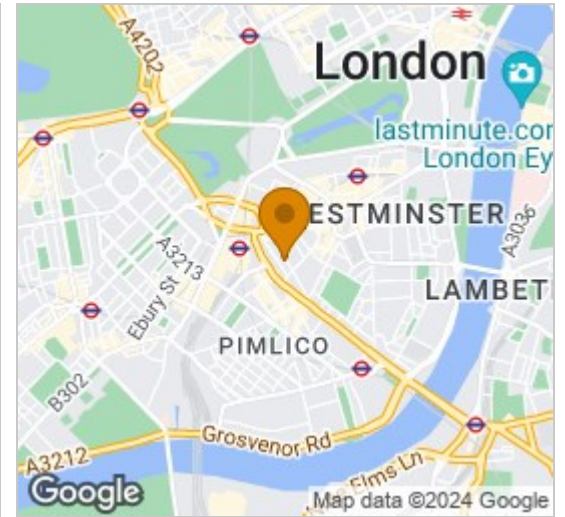
£1,269 Per Week



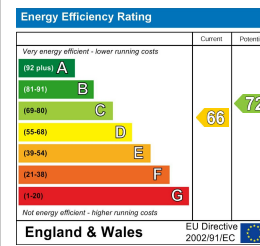
Floor Plan



Area Map



Energy Efficiency Graph



Viewing

By appointment. Contact us on 0207 052 1075 if you wish to arrange a viewing appointment for this property, or require further information.

- Four bedroom apartment in 1,787 sq ft (166.14 sqm) the heart of Westminster
- Parquet wood flooring ■ Marble tiled bathrooms throughout
- Stone's throw away from Victoria Street's amenities and restaurants ■ On-site porter

This elegant four bedroom apartment, nestled in the heart of Westminster on Morpeth Terrace, is available for lease through Prime London.

Totalling 1,787 sq ft (166.14 sqm), this property comprises a light and airy reception room with additional space for dining, a separate fully fitted kitchen with modern finishes, a generously sized master bedroom, and three additional bedrooms. There are two marble tiled bathrooms, and the property features parquet wood flooring throughout.

Morpeth Mansions is located a stone's throw away from Victoria Street's shops, restaurants and bars, as well as the River Thames just a short walk away. Residents benefit from an on-site porter.

For transportation, Victoria station is just moments away, servicing the Victoria, District and Circle lines, as well as National Rail services. St James and Pimlico underground stations are also both under 0.5 miles away.



These particulars, whilst believed to be accurate are set out as a general outline only for guidance and do not constitute any part of an offer or contract. Intending purchasers should not rely on them as statements of representation of fact, but must satisfy themselves by inspection or otherwise as to their accuracy. No person in this firm's employment has the authority to make or give any representation or warranty in respect of the property.