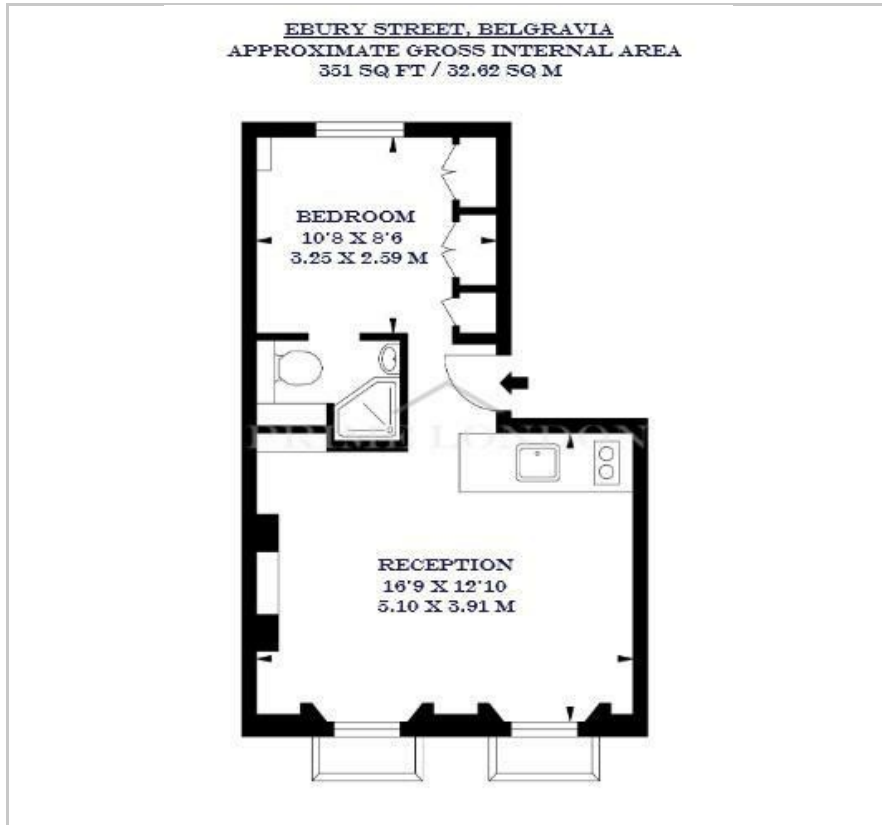




Ebury Street  
Belgravia, SW1W 9QD  
£692 Per Week

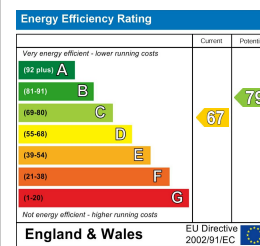
## Floor Plan



## Area Map



## Energy Efficiency Graph



## Viewing

By appointment. Contact us on 0207 052 1075 if you wish to arrange a viewing appointment for this property, or require further information.

- **Elegant one bedroom** ▪ 351 sq ft (32.62 sqm) apartment
- **Stunning and bright open** ▪ Ample storage throughout plan reception room
- **Access to the exclusive** ▪ Close to Sloane Square and Belgrave Square Gardens Victoria Underground



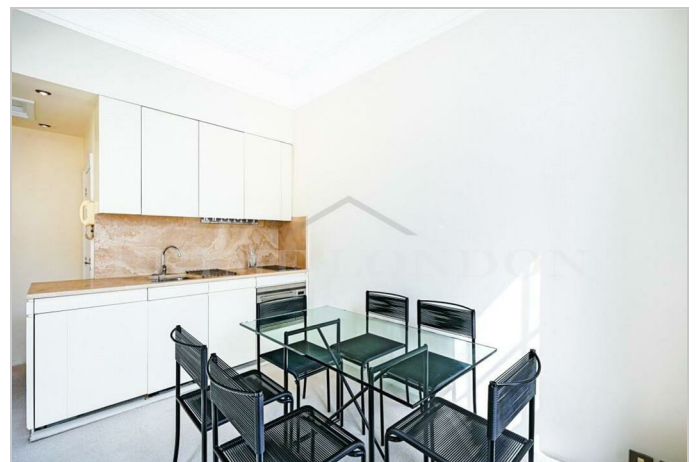
This elegant one bedroom apartment, situated in the famous Ebury Street, is available for lease through Prime London.

Totalling 351 sq ft and architect designed, the property features a stunning open reception room, dining area, and kitchen. The bedroom area, separated for privacy, includes an ensuite bathroom and offers serene garden views.

Ample storage space is available throughout the apartment, which has floor to ceiling windows and high ceilings.

Ebury Street, situated south of Eaton Square, is a prominent thoroughfare. The intersection of Elizabeth Street offers a charming array of eateries, bars, and boutique shops. Sloane Square and Kings Road are conveniently nearby.

Transportation options include Sloane Square and Victoria Underground stations.



These particulars, whilst believed to be accurate are set out as a general outline only for guidance and do not constitute any part of an offer or contract. Intending purchasers should not rely on them as statements of representation of fact, but must satisfy themselves by inspection or otherwise as to their accuracy. No person in this firm's employment has the authority to make or give any representation or warranty in respect of the property.