



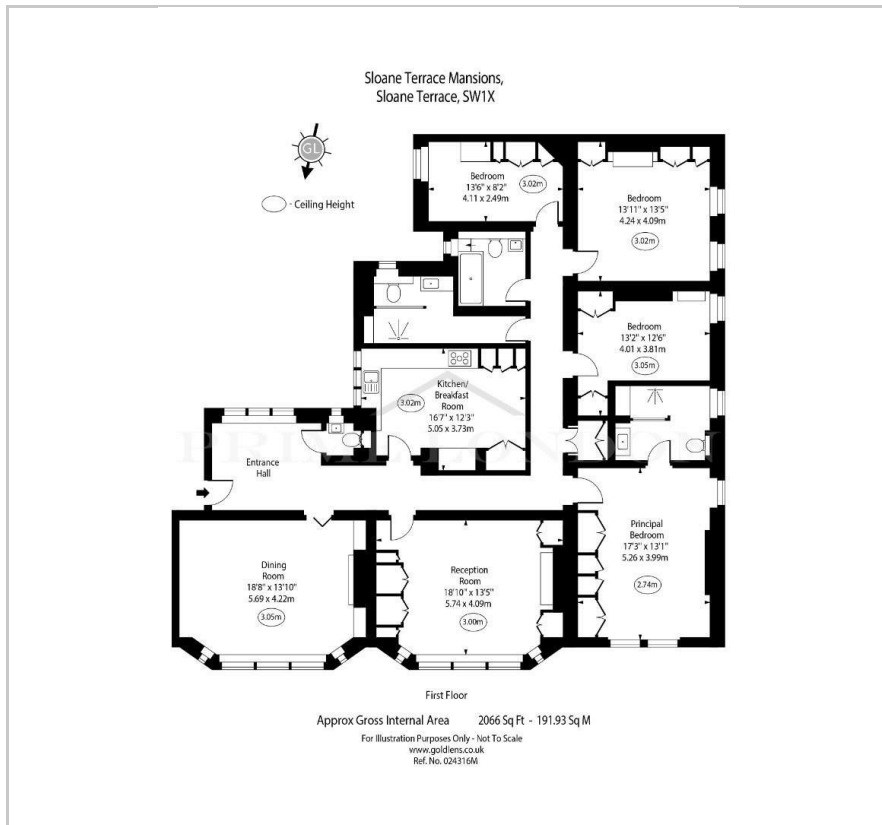
Sloane Terrace Mansions

Sloane Terrace, London, SW1X 9DG

Asking Price £5,500,000



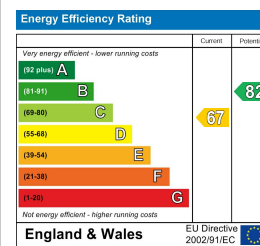
Floor Plan



Area Map



Energy Efficiency Graph



Viewing

By appointment. Contact us on 0207 052 1075 if you wish to arrange a viewing appointment for this property, or require further information.

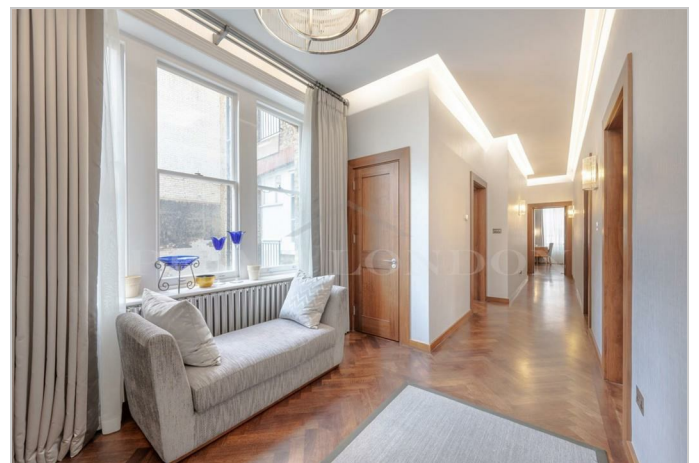
- Four bedroom apartment in the heart of Sloane Square
- Bespoke built-in wardrobes in three bedrooms
- Just 0.1 miles to Sloane Square Underground Station
- 2,066 sq ft (191.93 sqm)
- In close proximity to the restaurants and shops on King's Road
- Porter and lift access

Introducing a stunning four-bedroom, three bathroom apartment in the prestigious Sloane Terrace Mansions, now available for chain free sale through Prime London.

This beautifully presented property spans an impressive 2,066 sq ft (191.93 sqm) and features exceptional reception spaces, four generously-sized bedrooms with ample storage, including one with a luxurious en-suite three additional modern bathrooms, and a fully equipped kitchen designed for contemporary living.

Residents of Sloane Terrace Mansions enjoy the added benefits of a dedicated porter and a convenient lift, ensuring both security and ease of access.

Situated just off the exclusive Sloane Street, this apartment offers unparalleled access to the boutiques, shops, and renowned restaurants of King's Road. Additionally, the prime location ensures that Sloane Square Underground station is just a stone's throw away, providing excellent transport links to the rest of London.



These particulars, whilst believed to be accurate are set out as a general outline only for guidance and do not constitute any part of an offer or contract. Intending purchasers should not rely on them as statements of representation of fact, but must satisfy themselves by inspection or otherwise as to their accuracy. No person in this firm's employment has the authority to make or give any representation or warranty in respect of the property.