



## Wren House

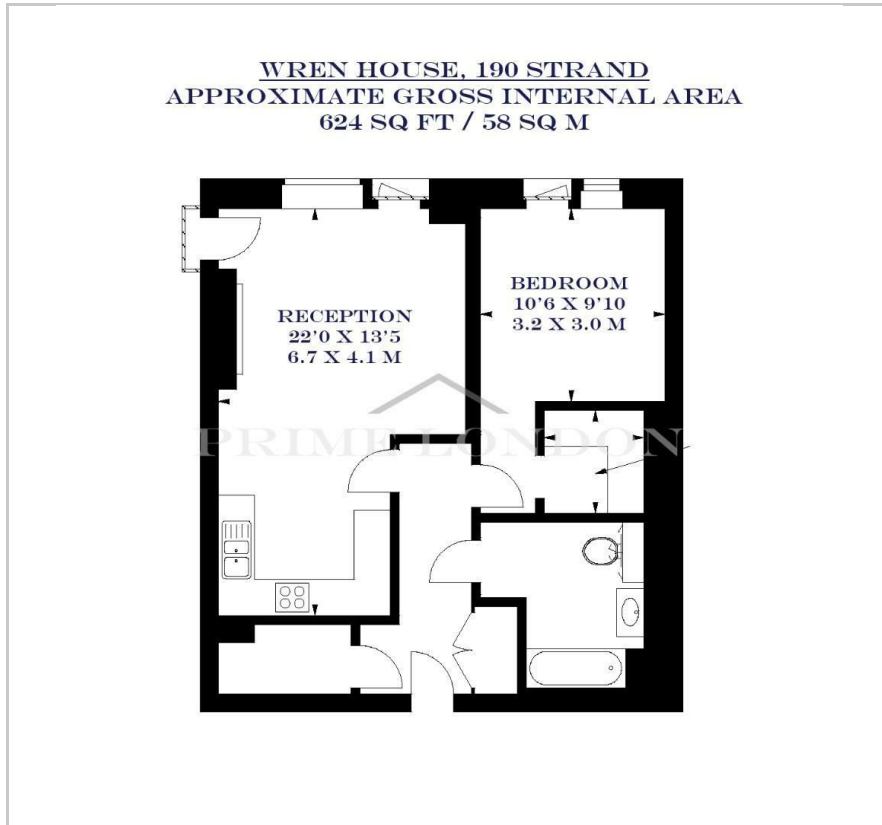
190 The Strand, London, WC2R 1AB

£1,142 Per Week





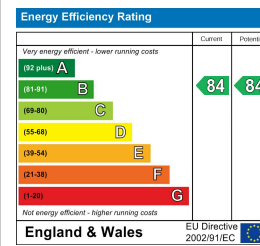
## Floor Plan



## Area Map



## Energy Efficiency Graph



## Viewing

By appointment. Contact us on 0207 052 1075 if you wish to arrange a viewing appointment for this property, or require further information.

- One bedroom apartment in ▪ 624 sq ft (58 sqm)  
190 Strand
- Resident's gym, spa, ▪ Short walk to Temple  
swimming pool virtual games Underground station  
room and meeting room
- Located in prime central ▪ 24 hour concierge  
London

This exceptional one bedroom apartment of 624 sq ft (58 sqm), in the luxurious 190 Strand development and close to the banks of the River Thames and Covent Garden, is available for lease through Prime London.

The property comprises a spacious entrance hall, a large open-plan reception room, dining area, and a smart kitchen with Miele integrated appliances. There is one double bedroom and a separate family bathroom.

The property also features comfort cooling, underfloor heating, and solid wood flooring.

Temple House enjoys an enviable riverside location, moments from Zone 1 transport links at Temple station (Circle and District lines), with easy access to Covent Garden, the West End, and The City.

190 Strand benefits from a five-star 24 hour concierge service, resident's private cinema, state of the art gym and swimming pool/spa.



These particulars, whilst believed to be accurate are set out as a general outline only for guidance and do not constitute any part of an offer or contract. Intending purchasers should not rely on them as statements of representation of fact, but must satisfy themselves by inspection or otherwise as to their accuracy. No person in this firm's employment has the authority to make or give any representation or warranty in respect of the property.