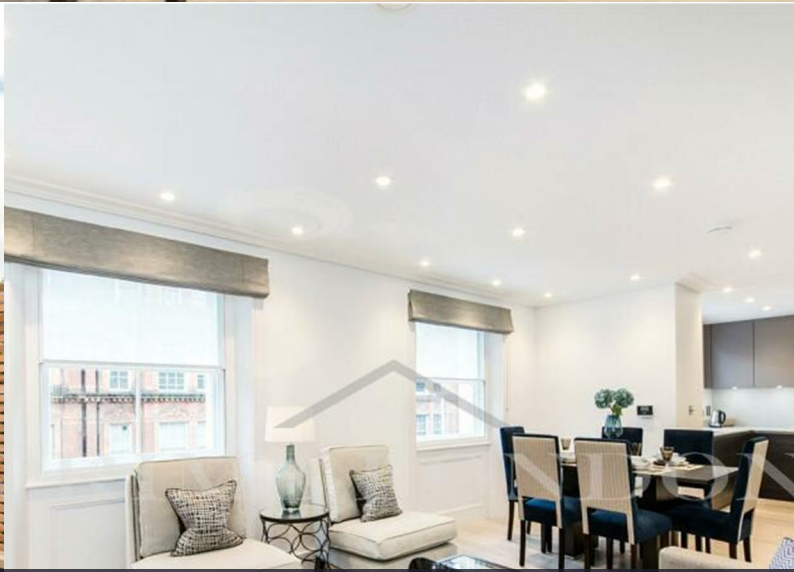




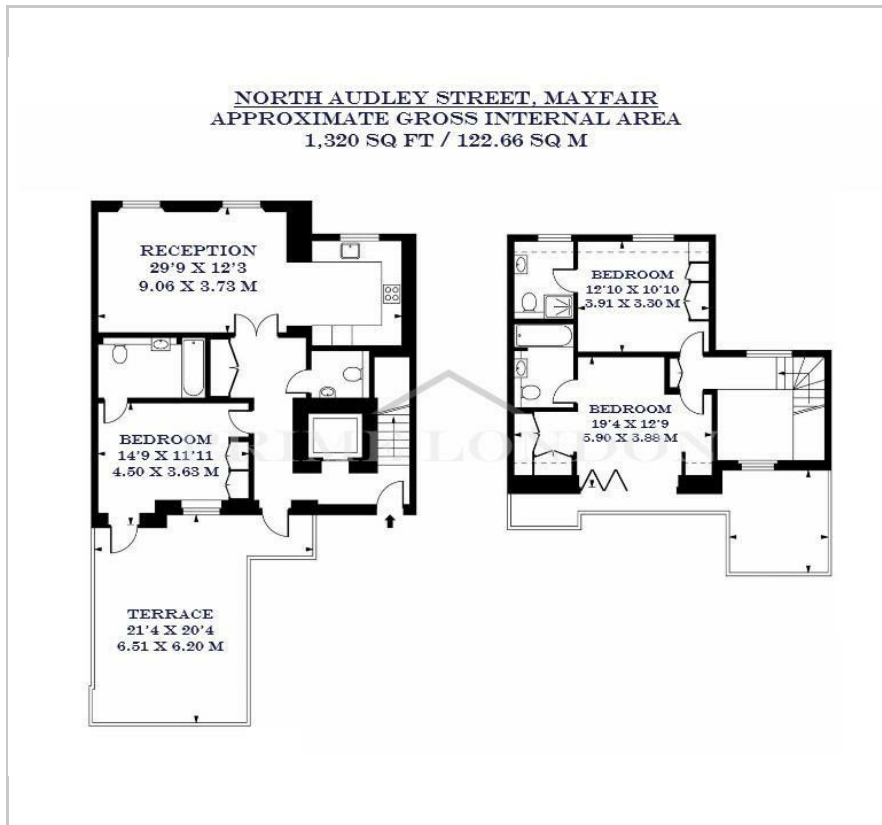
15A North Audley Street

Mayfair, W1K 6WZ

£6,000 Per Week



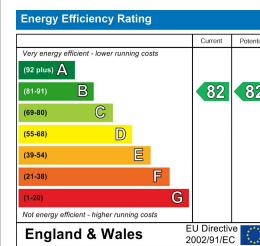
Floor Plan



Area Map



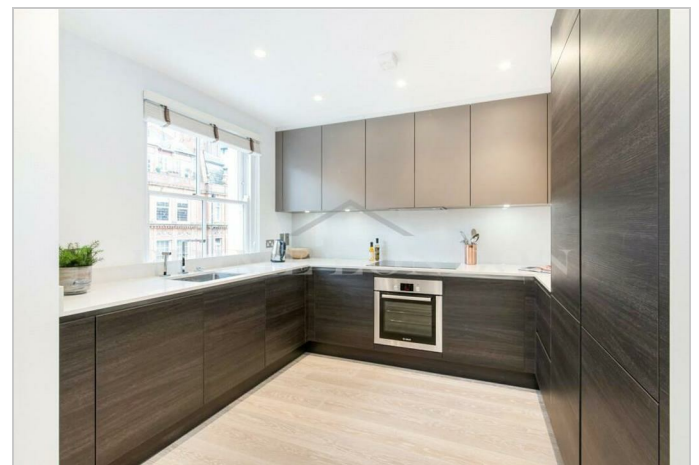
Energy Efficiency Graph



Viewing

By appointment. Contact us on 0207 052 1075 if you wish to arrange a viewing appointment for this property, or require further information.

- Three bedroom apartment in the area of Mayfair
- Three en-suite bathrooms
- Bond Street, Oxford Street and Marble Arch stations under 0.5 miles away
- 1,320 sq ft (122.66 sqm)
- Two generously sized private terraces
- Short walk to New Bond Street, Oxford Street and Selfridges



SHORT LET - This three bedroom, three bathroom apartment, located in the popular area of Mayfair and in close proximity to Oxford Street, is available for a short lease through Prime London.

Totalling 1,320 sq ft (122.66 sqm), this property is set over two floors and comprises an open plan reception/kitchen area, three double bedrooms, and four bathrooms (three being en-suites). The property additionally features two terraces, one on each floor; the second one can only be accessed through the master bedroom.

Located in Mayfair, this property is within walking distance to cafes, restaurants, and London's best luxury shopping; Selfridges and New Bond Street.

For transport, Bond Street, Marble Arch and Oxford Circus Underground stations are all under 0.5 miles away.



These particulars, whilst believed to be accurate are set out as a general outline only for guidance and do not constitute any part of an offer or contract. Intending purchasers should not rely on them as statements of representation of fact, but must satisfy themselves by inspection or otherwise as to their accuracy. No person in this firm's employment has the authority to make or give any representation or warranty in respect of the property.