

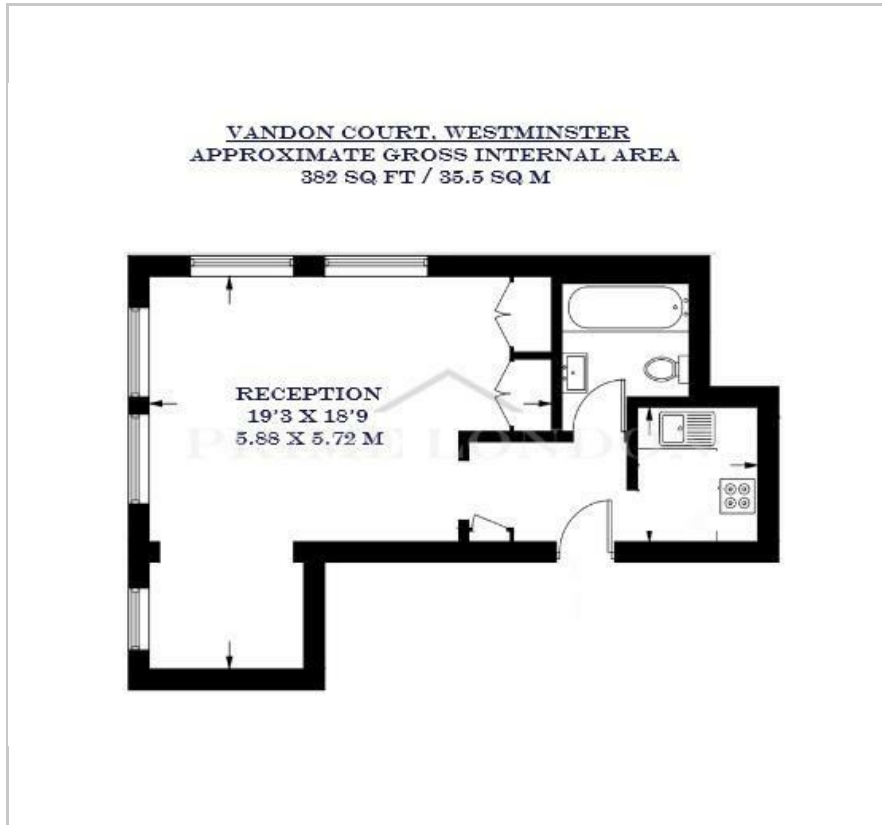
Vandon Court

64 Petty France, Westminster, SW1H 9HF

£550 Per Week



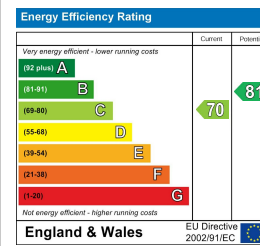
Floor Plan



Area Map



Energy Efficiency Graph



Viewing

By appointment. Contact us on 0207 052 1075 if you wish to arrange a viewing appointment for this property, or require further information.

- Stunning studio apartment
- 382 sq ft (35.5 sq m)
- Recently furnished and refurbished
- Located in the heart of Westminster
- St James' Park a stone's throw away
- Close to St James' Park, Victoria, and Westminster Stations



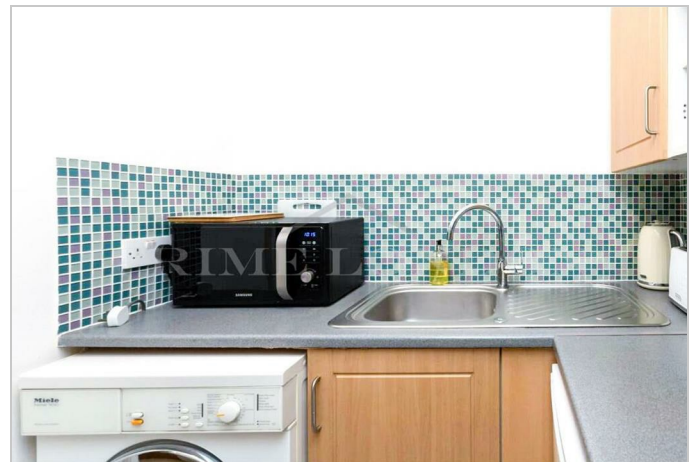
This stunning studio apartment, located in the excellently maintained Vandon Court, is available for lease through Prime London.

Totalling 382 sq ft (35.5 sq m), this property comprises of a spacious reception/bedroom, a separate kitchen, and a bathroom. Recently furnished and refurbished, the property exudes elegance and comfort.

Vandon Court showcases a freshly renovated exterior and provides the convenience of an on-site porter.

Nestled on Petty France, in the heart of Westminster, this property enjoys a central location. It offers easy access to an array of amenities, dining options, and shops in Victoria, St. James, Mayfair, and Westminster. Additionally, St James' Park is just 0.2 miles away.

For transportation, the Circle & District Lines at St. James's Park station is just 0.1 miles away, while Victoria station, serving mainline rail services, is approximately 0.3 miles away. For those commuting further, the Jubilee Line at Westminster station is conveniently accessible at around 0.6 miles distance.



These particulars, whilst believed to be accurate are set out as a general outline only for guidance and do not constitute any part of an offer or contract. Intending purchasers should not rely on them as statements of representation of fact, but must satisfy themselves by inspection or otherwise as to their accuracy. No person in this firm's employment has the authority to make or give any representation or warranty in respect of the property.