



## Claydon House

Chelsea Waterfront, Chelsea, SW10 0DD

£3,692 Per Week



4



3

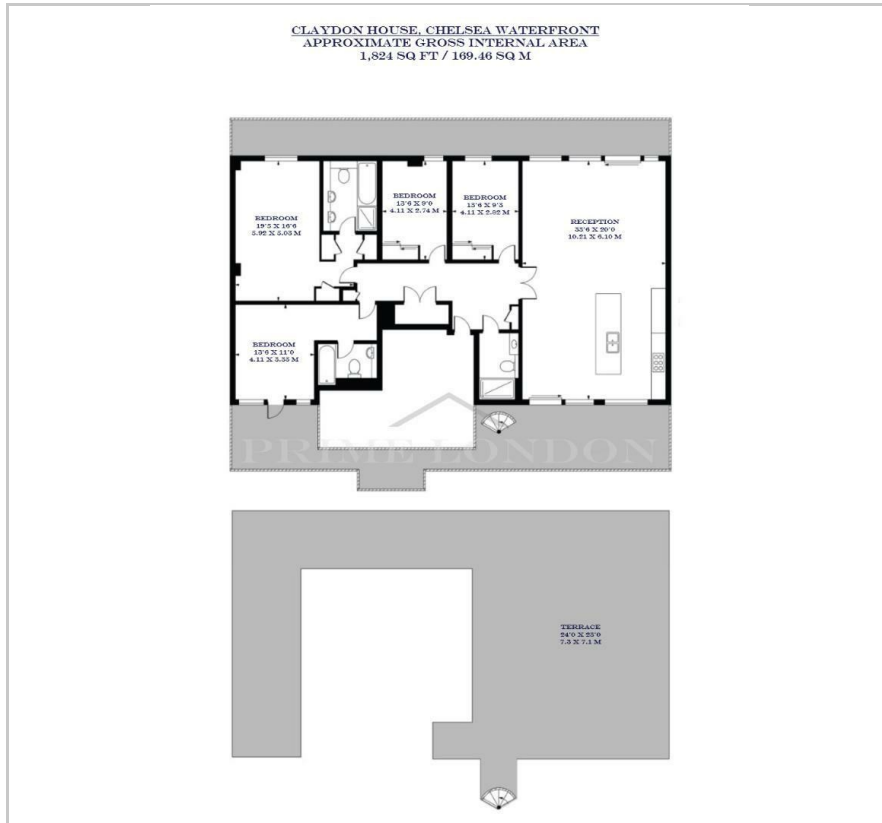


1



B

## Floor Plan



## Area Map



## Energy Efficiency Graph



## Viewing

By appointment. Contact us on 0207 052 1075 if you wish to arrange a viewing appointment for this property, or require further information.

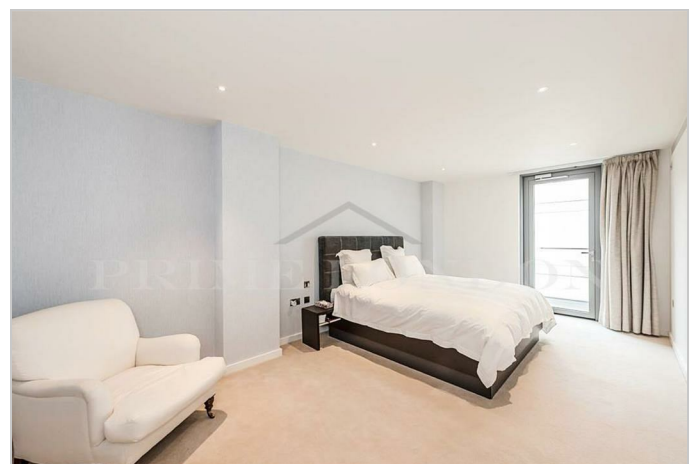
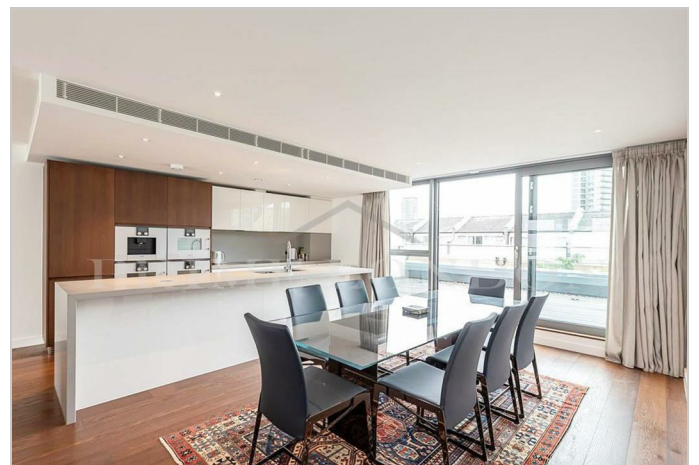
- Bright four bedroom ▪ 1,824 sq ft (169.46 sq m) apartment
- Open plan kitchen with integrated kitchen
- Private balcony overlooking the Thames
- Close proximity to Battersea ▪ Just 0.3 miles to Imperial Wharf Station

This spacious four-bedroom apartment, located in the Chelsea Waterfront development, is available for a short-term lease through Prime London.

Totalling 1,824 sq ft (169.46 sq m), this property comprises a bright living room and open plan kitchen, fully equipped with modern appliances. Each bedroom features a super king, king, or single size bed, while the bathrooms are fitted with a bathtub with an overhead shower and a free-standing shower.

Located just a 7-minute walk from Imperial Wharf Tube Station, you'll have easy access to all West London line services, allowing you to explore London's iconic streets and landmarks with ease. Whether it's Oxford Street, Hyde Park, Buckingham Palace, or Covent Garden, you'll have a plethora of attractions at your fingertips. Additionally, Heathrow Airport is easily accessible from this location.

Surrounded by cafes, restaurants, shops, and supermarkets, the area offers plenty of options for dining and shopping.



These particulars, whilst believed to be accurate are set out as a general outline only for guidance and do not constitute any part of an offer or contract. Intending purchasers should not rely on them as statements of representation of fact, but must satisfy themselves by inspection or otherwise as to their accuracy. No person in this firm's employment has the authority to make or give any representation or warranty in respect of the property.