



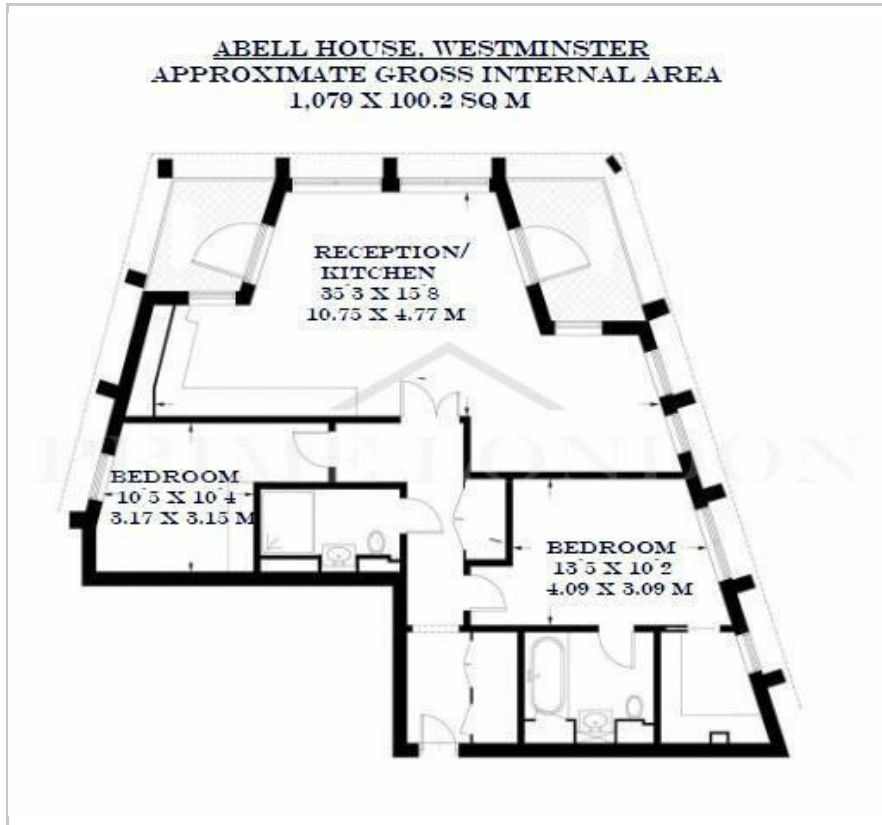
Abell House

31 John Islip Street, Westminster, SW1P 4FE

£1,475 Per Week



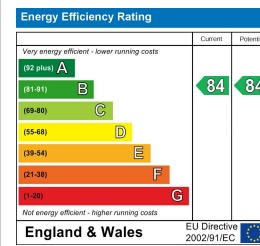
## Floor Plan



## Area Map



## Energy Efficiency Graph



## Viewing

By appointment. Contact us on 0207 052 1075 if you wish to arrange a viewing appointment for this property, or require further information.

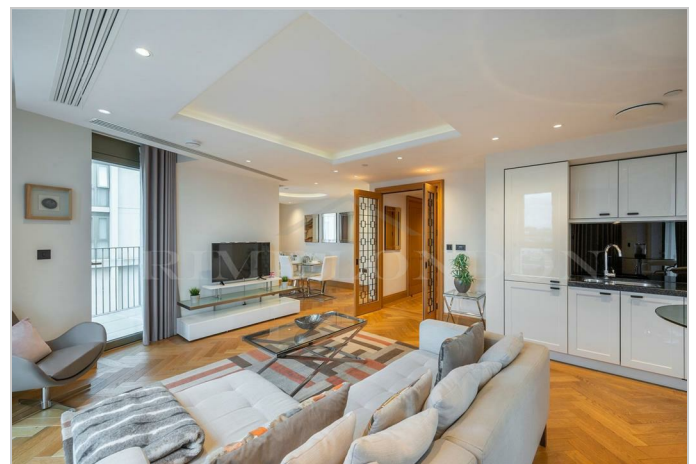
- Fully Furnished
- Luxury two bedroom apartment
- 1,079 sq ft / 100.2 sq m
- Secure Parking
- Resident's leisure suite including gym and pool
- 24 hour concierge

This immaculate two bedroom two bathroom apartment, set in an excellent position within Abell House - featuring a 24 hour concierge, gym, swimming pool, landscaped gardens and meeting rooms – and overlooking the peaceful internal gardens, is available for sale through Prime London.

The spacious 1,079 sq. ft / 100.2 sqm property comprises a triple aspect open plan reception, roof top views taking in iconic landmarks including Battersea Power Station and Westminster Cathedral, there are two private terraces, a fully fitted high-end kitchen, two double bedrooms with modified storage, and two beautifully finished bathrooms (one being en suite). The property also benefits from comfort cooling and wooden flooring throughout.

Noted as one of London's premier addresses, Abell & Cleland has been created to provide residences of exceptional quality. Close to the Division Bell area surrounding the Houses of Parliament, Abell & Cleland has been conceived by award-winning architects, as a range of apartments that match the grand surroundings of their remarkable Westminster location. Positioned to the south of St James Park and east of Victoria.

The area includes some of London's most iconic landmarks, yet retains a surprisingly village like atmosphere. The property is within reach of the many amenities, restaurants and shops of Victoria, Westminster and St James. Local park lands include: Green Park and St James's Park.



These particulars, whilst believed to be accurate are set out as a general outline only for guidance and do not constitute any part of an offer or contract. Intending purchasers should not rely on them as statements of representation of fact, but must satisfy themselves by inspection or otherwise as to their accuracy. No person in this firm's employment has the authority to make or give any representation or warranty in respect of the property.