

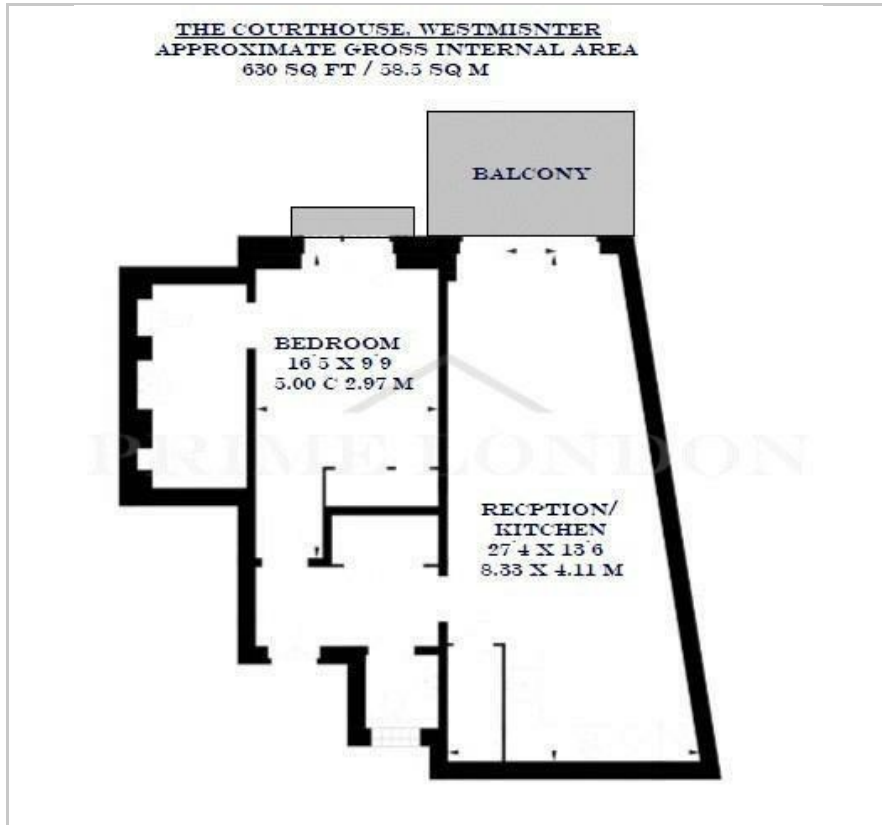
The Courthouse

70 Horseferry Road, Westminster, SW1P 2DU

Asking Price £950,000



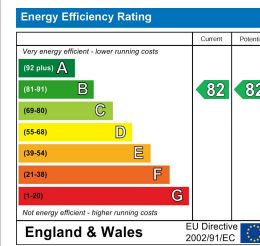
Floor Plan



Area Map



Energy Efficiency Graph



Viewing

By appointment. Contact us on 0207 052 1075 if you wish to arrange a viewing appointment for this property, or require further information.

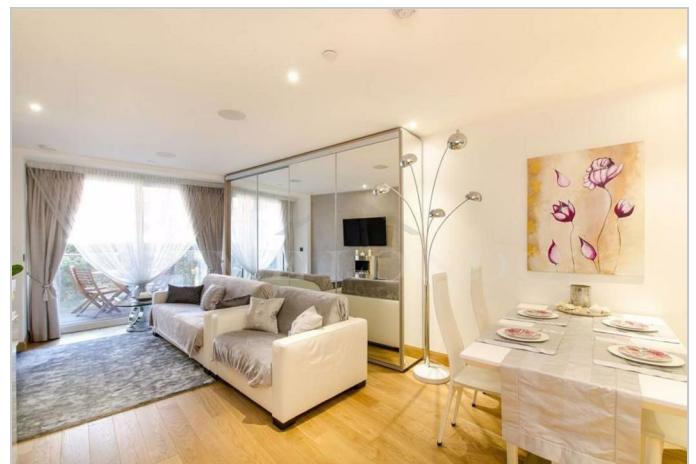
- Spacious one bedroom apartment
- 630 sq ft (59.5 sqm)
- Private balcony with views over communal gardens
- Stylish interior
- High specification fixtures and fittings
- Landscaped gardens and a residents' fitness centre
- Underfloor heating, comfort cooling and recessed lighting
- 24 hour concierge service

This spacious and luxurious apartment of 630 sq ft (59.5 sq m) in the prestigious development The Courthouse is available for chain free sale through Prime London.

The property features a sizeable reception with access to a private balcony, double bedroom, separate bathroom and a large utility cupboard.

The apartment feature fully integrated appliances, high specification 'walk in' shower suite, ample storage, underfloor heating, comfort cooling and recessed lighting.

This exciting new addition to Westminster features a concierge service, landscaped gardens and a resident's fitness centre, making this the ideal home or London base. Horseferry Road offers immediate access to the many shops and street cafes available within Westminster Village while St James's Park and Westminster Palace are within walking distance.



These particulars, whilst believed to be accurate are set out as a general outline only for guidance and do not constitute any part of an offer or contract. Intending purchasers should not rely on them as statements of representation of fact, but must satisfy themselves by inspection or otherwise as to their accuracy. No person in this firm's employment has the authority to make or give any representation or warranty in respect of the property.