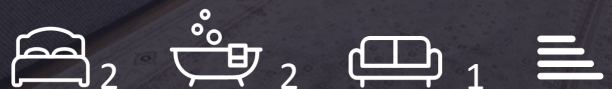




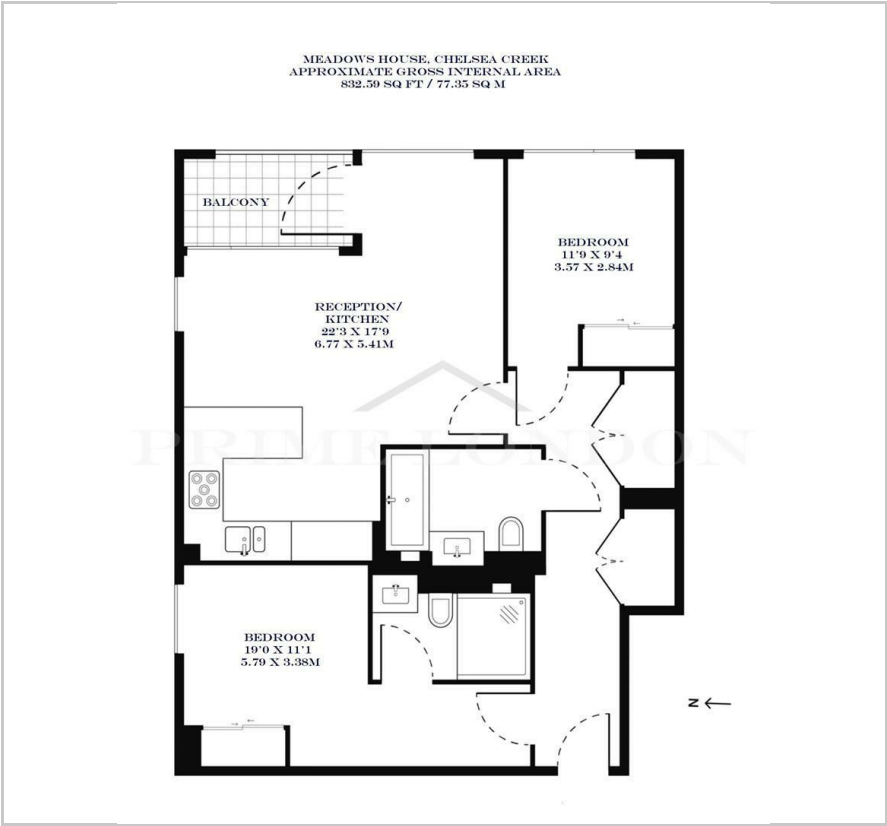
Meadows House

6 Park Street, Chelsea Creek, SW6 2FQ

Asking Price £1,029,000



Floor Plan



Area Map



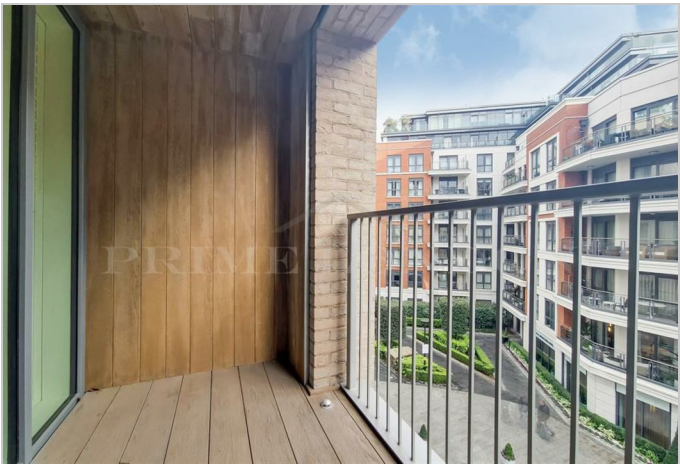
Energy Efficiency Graph



Viewing

By appointment. Contact us on 0207 052 1075 if you wish to arrange a viewing appointment for this property, or require further information.

- modern two bedroom ■ 832.59 sq ft / 77.35 sq m apartment
- Right to park ■ Chain free
- Excellent resident's facilities ■ 24 hour concierge



This modern two bedroom two bathroom apartment, with private balcony and set in Meadows House in Chelsea Creek is available for chain free sale through Prime London. The property also comes with the right to park. Set in a quiet south east facing position, this well apportioned apartment of 832.59 sq ft / 77.35 sq m offers a spacious open plan reception with fully-fitted kitchen area, two ample double bedrooms with built in wardrobes, and two luxurious bathrooms (one of which is en suite). This apartment also benefits from comfort cooling, underfloor heating, and has a private balcony that can be accessed via the reception room. Residents of this exceptional development have exclusive use of the spa, fitness centre, indoor swimming pool, sauna, steam room, gymnasium and treatment room. Furthermore, residents will also benefit from a 24 hour concierge and an unrivalled selection of shops, bars, restaurants, leisure facilities and beautiful landscaped courtyards.



These particulars, whilst believed to be accurate are set out as a general outline only for guidance and do not constitute any part of an offer or contract. Intending purchasers should not rely on them as statements of representation of fact, but must satisfy themselves by inspection or otherwise as to their accuracy. No person in this firms employment has the authority to make or give any representation or warranty in respect of the property.