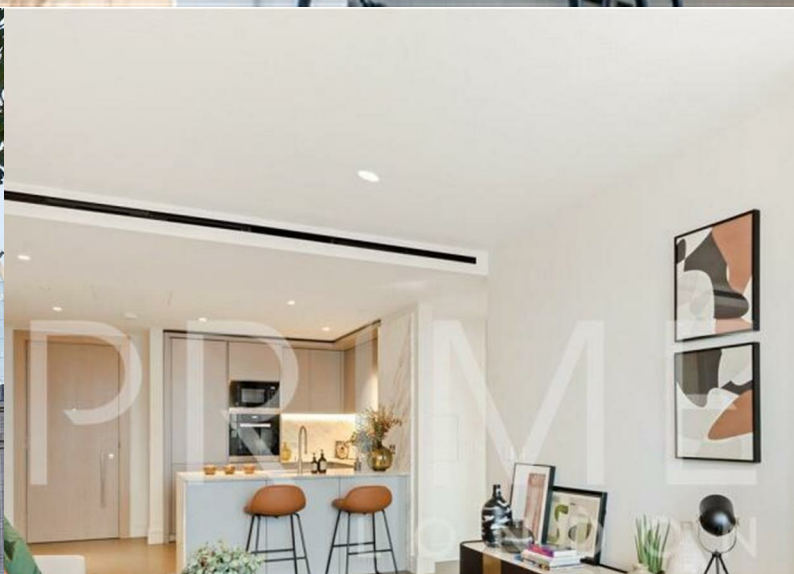


One Bishopsgate Plaza

80 Houndsditch, City, EC3A 7AB

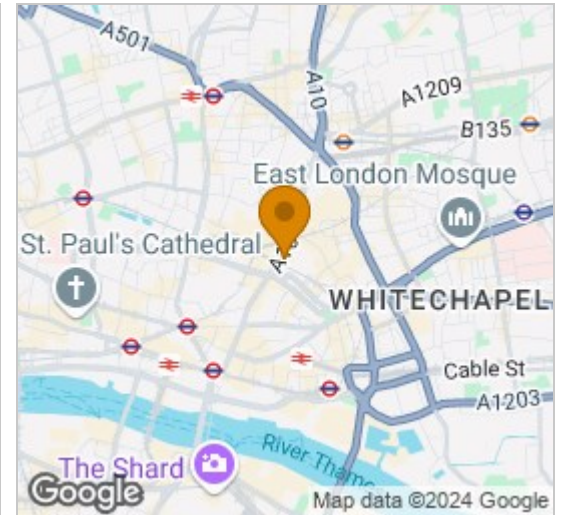
Asking Price £1,120,000



Floor Plan



Area Map



Energy Efficiency Graph



Viewing

By appointment. Contact us on 0207 052 1075 if you wish to arrange a viewing appointment for this property, or require further information.

- One bedroom apartment
- Resident's gym, spa, pool and lounge
- Nestled in the heart of The City
- 635 sq ft (59 sqm)
- Access to the luxuries of Pan Pacific Hotel
- 24 hour concierge

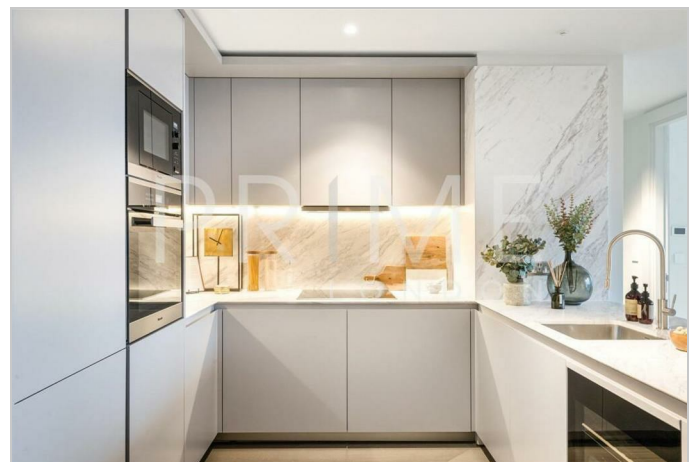
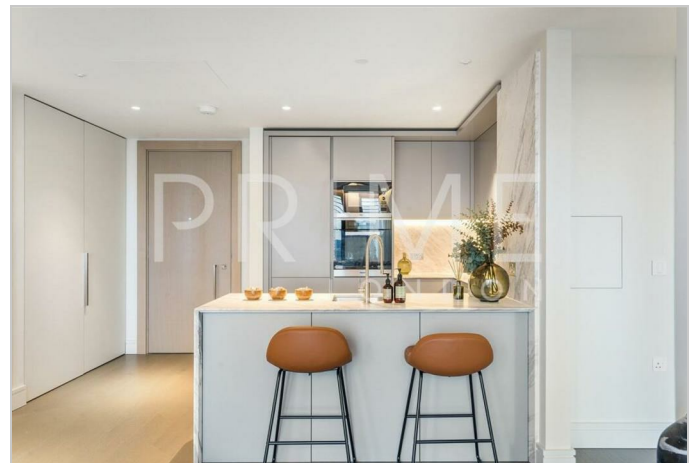
Set high above the city within the iconic One Bishopsgate Plaza, this remarkable one-bedroom apartment offers uninterrupted, panoramic views of London's skyline that few other developments can match. Available for chain-free sale through Prime London, this residence exudes sophistication and space, with an open-plan layout that combines luxury and practicality.

This well-appointed 635 sq ft (59 sqm) apartment features an open-plan living space with floor-to-ceiling windows that fill the rooms with natural light. High-end finishes include a marble kitchen worktop, Miele appliances, a dedicated dressing area, and an en-suite shower room, creating an atmosphere of modern luxury and sophistication throughout.

The Sky Residences at One Bishopsgate Plaza offer a unique chance to live in the heart of London's historic Square Mile. These highly secure and private apartments—available in one, two, and three-bedroom configurations—begin at the 21st floor, ensuring every home benefits from exceptional city and skyline views. Residents enjoy privacy and peace, supported by the exclusivity and modern conveniences of high-rise living.

In addition to private residential amenities, residents gain exclusive access to the luxuries of Europe's first Pan Pacific Hotel. This five-star hotel, designed by the renowned Yabu Pushelberg, provides an array of world-class amenities, elevating the living experience. From refined dining to serene wellness spaces, the Pan Pacific amenities offer an unparalleled lifestyle experience within the same landmark building.

Interior photos are from show apartments



These particulars, whilst believed to be accurate are set out as a general outline only for guidance and do not constitute any part of an offer or contract. Intending purchasers should not rely on them as statements of representation of fact, but must satisfy themselves by inspection or otherwise as to their accuracy. No person in this firm's employment has the authority to make or give any representation or warranty in respect of the property.