

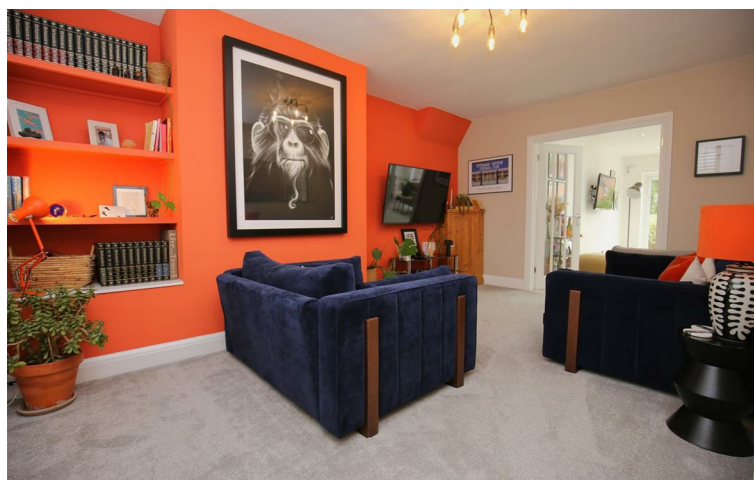


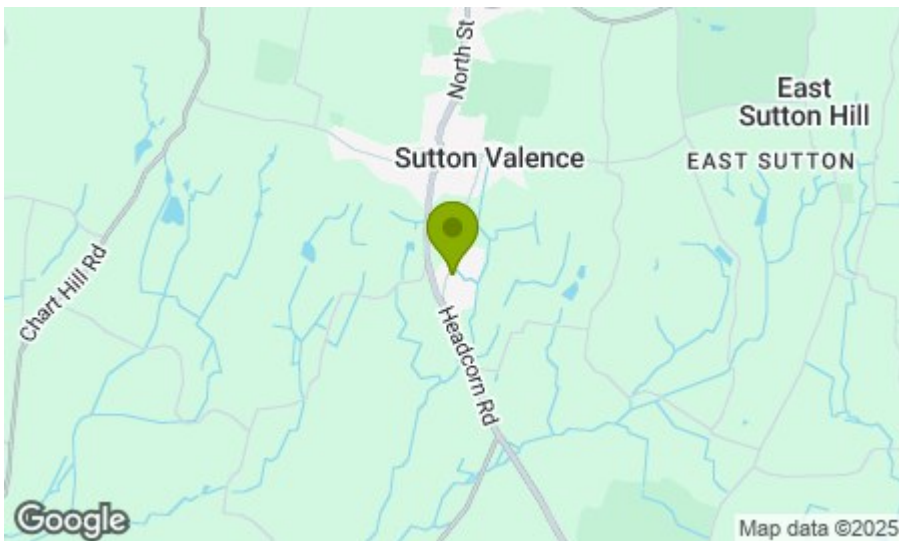
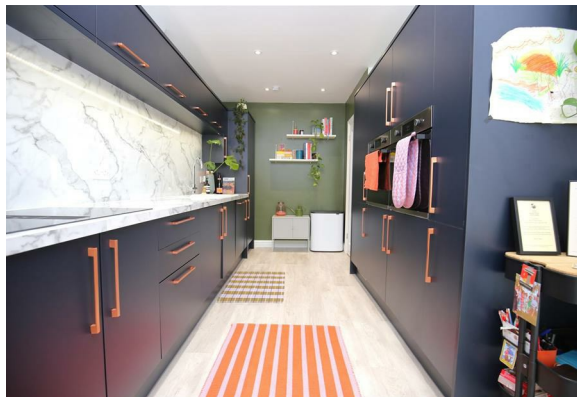
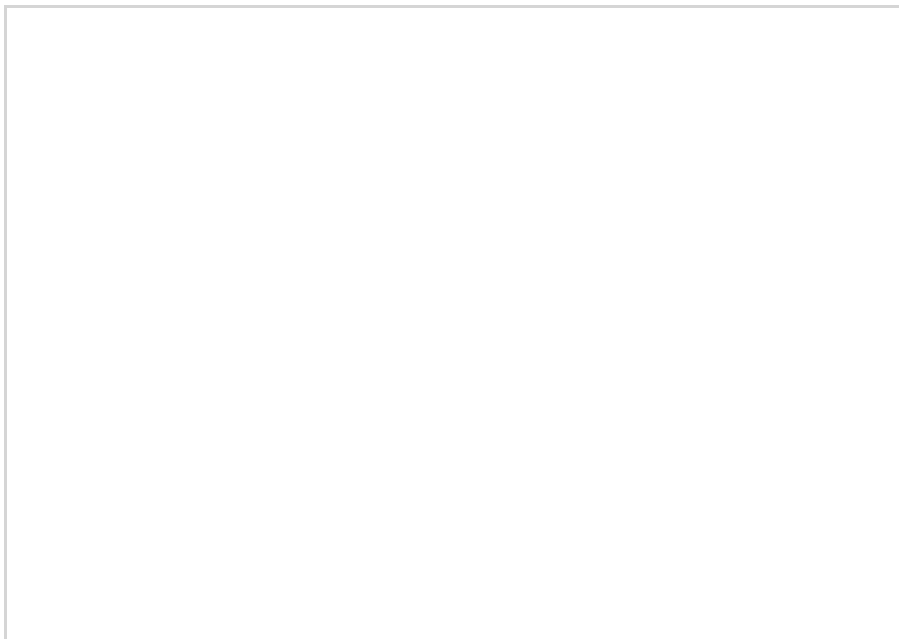
2 South Lane, Sutton Valence, ME17 3AZ
£1,900

A Stylish Village Home with Space, Comfort & Charm

Nestled in the sought-after village of Sutton Valence, this beautifully refurbished three-bedroom terraced home blends contemporary style with everyday practicality. With 796 sq. ft. of thoughtfully designed space, it's perfectly suited for young professionals or families who want a home that feels both spacious and welcoming.

On the ground floor, a bright living room flows into a versatile second reception room, currently set as a dining and lounge area, with doors opening straight onto the patio and garden, a wonderful spot for entertaining or relaxed family time. The sleek, modern kitchen is fitted with integrated appliances and a double oven, with direct access to the garden for al fresco dining. A separate entrance hall and convenient downstairs WC complete the layout.





Viewing

Strictly by arrangement with the Agent's Coxheath Office:
1A Hamilton House, Heath Road, Maidstone, Kent, ME17 4DF
T: 01622 620260

Energy Efficiency Rating		
	Current	Potential
Very energy efficient - lower running costs		
(92 plus) A		
(81-91) B		
(69-80) C		
(55-68) D		
(39-54) E		
(21-38) F		
(1-20) G		
Not energy efficient - higher running costs		
England & Wales		
EU Directive 2002/91/EC		

Page & Wells limited for themselves and for the vendors of this property whose agents they are give notice that: 1. These particulars do not constitute any part of, an offer or a contract. 2. All statements contained in these particulars as to this property are made without responsibility on the part of Page & Wells Limited or the Vendor. 3. None of the statements contained in these particulars as to the property is to be relied on as statements or representations of fact. 4. Any intending purchaser must satisfy himself by inspection or otherwise as to the correctness of each of the statements contained in these particulars. 5. The vendor does not make or give, and neither Page & Wells Limited nor any person in their employment has any authority to make or give any representation whatsoever in relation to this property. These particulars are supplied on the understanding that all negotiations are carried out throughout Page & Wells Limited. Properties with a reference prefixes EAA are those which Page & Wells Limited disclose an interest in accordance with the provisions of the Estates Agents Act 1979



Coxheath Office, 1A Hamilton House, Heath Road, Maidstone, Kent, ME17 4DF
T: 01622 620260
E: lettings@page-wells.co.uk
page-wells.co.uk