

BINGHATTI
AQUARISE

OFF-MARKET LAUNCH

CONFIDENTIAL



Embrace *the* Current

Aquarise, nestled in the **heart of Business Bay**.

Steps away from the **Dubai Canal**, a stone's throw from **Downtown Dubai**. Immersed in the city's energy, yet a world apart. A place where you can embrace the current, yet find your own gentle flow.



Burj Khalifa & Dubai Mall
5 minutes



Dubai Opera
5 minutes



Dubai International Financial Centre (DIFC)
10 minutes



Museum of the Future
12 minutes



The Meydan Hotel & Race Course
12 minutes



Burj Al Arab & Jumeirah Beach
15 minutes



Dubai International Airport (DXB)
16 minutes



Dubai Harbour
16 minutes



Dubai Creek Golf & Yacht Club
16 minutes



Palm Jumeirah
18 minutes





بن غاطي
BINGHATTI

BINGHATTI
AQUARISE
STARTING PRICES

STANDARD UNIT TYPE		STARTING PRICES	
STUDIO APARTMENT	AED 999,999	USD 272,500	SAR 1,019,999
1 BEDROOM APARTMENT	AED 1,850,000	USD 505,000	SAR 1,886,999
2 BEDROOM APARTMENT	AED 2,750,000	USD 750,000	SAR 2,804,999

STANDARD PAYMENT PLAN: **70/30**

EXPECTED COMPLETION DATE: **30.06.2027**

THE PROJECT WILL BE AVAILABLE FOR EOI
FROM **17TH APRIL 2025.**



BINGHATTI AQUARISE

STARTING PRICES

PREMIUM UNIT TYPE	STARTING PRICES		
2 BR ROYAL SUITE (SWIMMING POOL)	AED 3,750,000	USD 1,022,000	SAR 3,824,999
3 BEDROOM APARTMENT	AED 4,500,000	USD 1,226,000	SAR 4,589,999
3 BR ROYAL SUITE (SWIMMING POOL)	AED 5,000,000	USD 1,362,000	SAR 5,099,999
4 BEDROOM APARTMENT	AED 6,000,000	USD 1,635,000	SAR 6,119,999
RETAIL	AED 4,300,000	USD 1,172,000	SAR 4,385,999

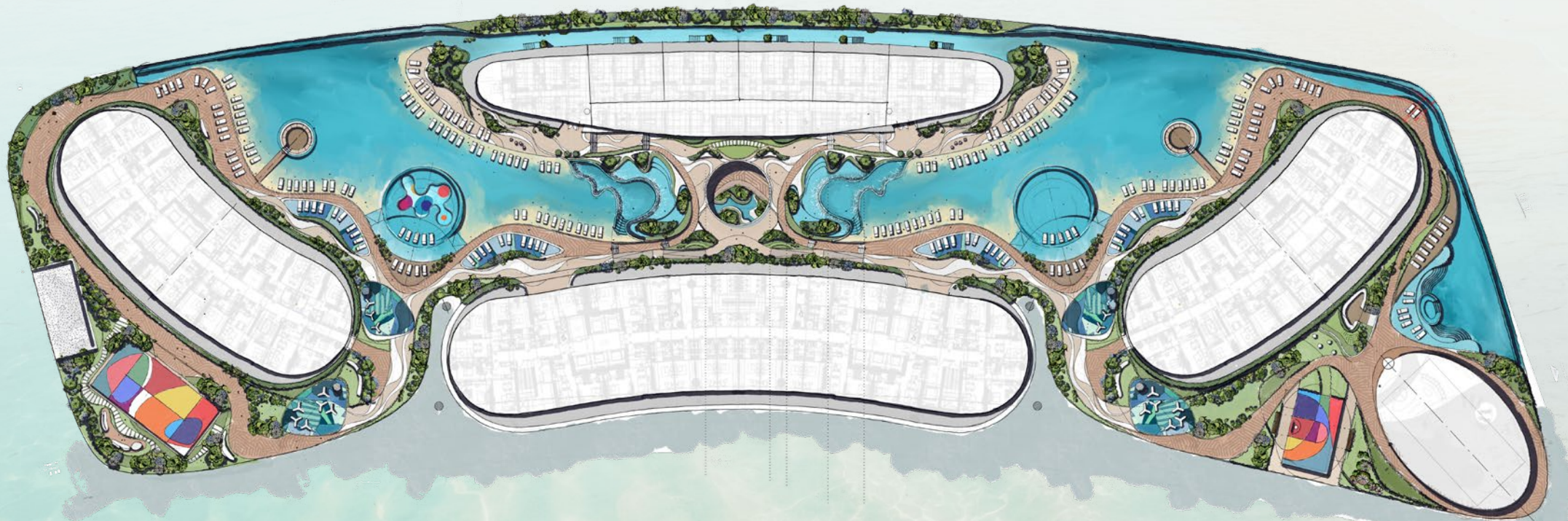
STANDARD PAYMENT PLAN: **70/30**

EXPECTED COMPLETION DATE: **30.06.2027**

THE PROJECT WILL BE AVAILABLE FOR EOI
FROM **17TH APRIL 2025.**



BINGHATTI
AQUARISE
AMENITIES FLOOR PLAN





RECALL THE
Crystal Shores
OF CÔTE D'AZUR

