



MARIE DAVIS

exp[®] UK

@ marie.davis@exp.uk.co.uk

mariedavis.exp.uk.com

07946 490 264

The Mead, Beckenham, BR3

Guide Price £950,000

🛏 4 🚿 3 🛋 2



Please Quote Ref: MD1103 for All Enquiries

Guide Price £950,000 – £1,000,000

Homes on The Mead rarely come to market and when they do, they tend to be the ones families wait for!

Positioned on one of Beckenham's most sought after residential roads, this elegant four-bedroom family home is offered chain free and delivers the perfect balance of space, character, and modern comfort, all within easy reach of London while enjoying a distinctly village style setting.

The ground floor flows beautifully, designed for both everyday living and entertaining. A generous front reception room, complete with a feature fireplace and bay window, sets the tone with warmth and character. To the rear, a spacious dining area opens directly onto a sun filled, south facing garden, creating a natural hub for family life and relaxed summer gatherings.

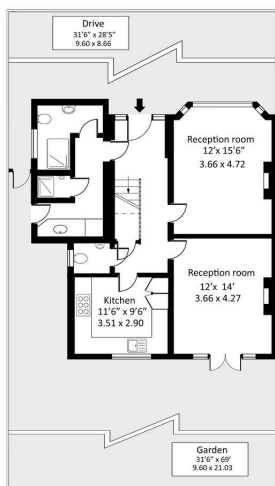
The kitchen has been recently updated with a sleek, contemporary finish, fully integrated appliances, and a range cooker, practical, stylish and very much the heart of the home. A ground floor shower room, utility space, and additional WC add thoughtful functionality without compromising the layout.

Upstairs, the principal bedroom feels calm and refined, featuring fitted wardrobes, a bay window, and a character fireplace. Three further well proportioned double bedrooms offer flexibility for growing families, guests, or home offices, all served by a smart, fully tiled family bathroom. The generously sized loft space offers potential for extension too!

Outside, the south facing rear garden is a standout feature, private, well sized, and ideal for entertaining, children or simply enjoying long afternoons in the sun.

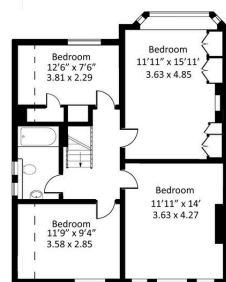
The Mead is widely regarded as one of Beckenham's premier addresses, prized for its peaceful surroundings and sense of community. Beckenham Junction and Ravensbourne stations are





Ground floor

The Mead, Beckenham, BR3



First floor

Approx gross internal area incl restricted hight : 1480 sq ft - 137.5 sq m
Approx gross internal area excl. restricted hight : 1440 sq ft - 133.8 sq m

Measured in accordance with RICS guidelines. Every attempt is made to ensure accuracy. However all measurements are approximate. The floor plan is illustrative purposes only.

- Please Quote Ref: MD1103 for All Enquiries
- Chain Free
- Four Bedrooms
- Utility Room
- Driveway
- GUIDE PRICE £950,000 - £1,000,000
- Two Reception Rooms
- Newly Fitted Kitchen
- South Facing Garden
- 1480 SQ FT

