



Southview Road

Woldingham, CR3

exp[®]
REALTY

LUXURY

AN EXTRAORDINARY OPPORTUNITY. . .

West View is a stunning, gated family home located on a private road in Woldingham Village, Surrey. It offers modern family living and entertainment, with picturesque views of the golf course and woodland.

The property is well-located for easy access to Central London, the M25 and London Gatwick, as well as a selection of top independent schools.

The house sits on a substantial plot with space for a paddock or swimming pool. The interior boasts contemporary design and classic charm, with high-quality finishes and bespoke fittings.

The property features five double bedrooms, a modern family bathroom, a large open-plan kitchen/diner and a dual-aspect formal lounge.

To the front of the house, there is a large lawn and a detached double garage, which could easily be converted to a spacious annexe, spa/gym or private guest rooms.

To the rear, the large terrace leads to a substantial flat lawn with a paddock and backs onto private woodland. The property also benefits from an alarm and CCTV.

Tenure: Freehold
Council Tax Band: G
Tandridge District Council
EPC Rating Current: C Potential: B





5 BEDROOMS

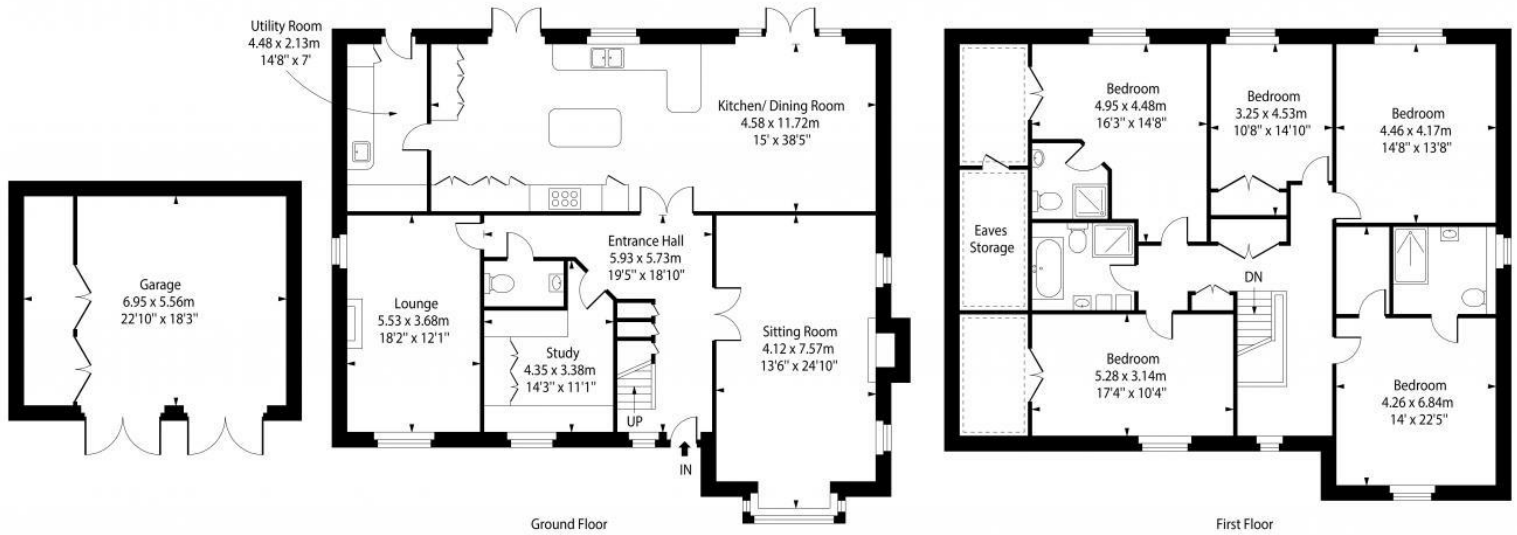
3.5 BATH

3487 SQFT

Scan here for a
VIP Buyer's Experience:



Approximate Gross Internal Area
337.21 sq m / 3629.69 sq ft
(Including Eaves and Garage)



Not to scale, for guidance only and must not be relied upon as a statement of fact. All measurements and areas are approximate only and have been prepared in accordance with the current edition of the RICS Code of Measuring Practice.



LUXURY



Melanie Attwater

Caterham & Surrounds Property Expert

Direct: +44 7852 940 409
melanie.attwater@exp.uk.com
expluxury.com