

enfields



enfields

6 Station Road, Burley In Wharfedale, LS29 6JL

t: 01943 618661 e: sales-wharfedale@enfields.co.uk www.enfields.co.uk

The agents have not tested any apparatus, equipment, fittings or services and so cannot verify that they are in working order. The buyer is advised to obtain verification from their Solicitor or Surveyor. Items shown in photographs are not necessarily included in the sale. The room measurements are given for guidance only and should not be relied upon when ordering such items as furniture, appliances and carpets. While we endeavour to make sales particulars accurate and reliable, they are only a general guide to the property and accordingly, if there is any point which is of particular importance to you, please contact the office and will be pleased to check the position for you, especially if you are contemplating travelling some distance to view the property. Any mention of parking, allocated parking or off road has not been checked by the Agent and the buyer is advised to seek verification from their Legal Representative. Confirmation of these draft property particulars is currently awaited from the vendor. therefore, you are notified that the Agent holds no responsibility for any inaccuracies that may be contained within.

enfields



23 Hasley Road, LS29 7PW
Four Bedroom Detached Home
£550,000

Sought After Location : Spacious with Flexible Living Accommodation Throughout : Lounge Through Diner with Doors Leading to the Rear Garden : Breakfast Kitchen : Double Bedrooms : Ground and First Floor Bathrooms : Large Plot With Gardens to Front and Rear : Driveway and Garage : For Sale with No Chain

PROPERTY DETAILS

Nestled amidst the serene beauty of Burley In Wharfedale, this spacious Dorma bungalow offers an unparalleled lifestyle opportunity. As you step inside, you're greeted by a warm and inviting ambiance, with a generously sized breakfast kitchen where culinary adventures await. The large lounge through diner beckons for cozy gatherings and entertaining, seamlessly flowing into the rear garden through sliding doors, where al fresco dining becomes a delightful routine.

With two double bedrooms on both the ground and first floors, this home effortlessly accommodates family and guests alike. Each floor boasts a bathroom, ensuring convenience and comfort for all occupants. The property occupies an expansive plot, with manicured gardens both front and rear providing a tranquil sanctuary for relaxation and outdoor activities. A driveway and garage complete the ensemble, offering ample parking and storage space.

Discover the Charms of Burley In Wharfedale

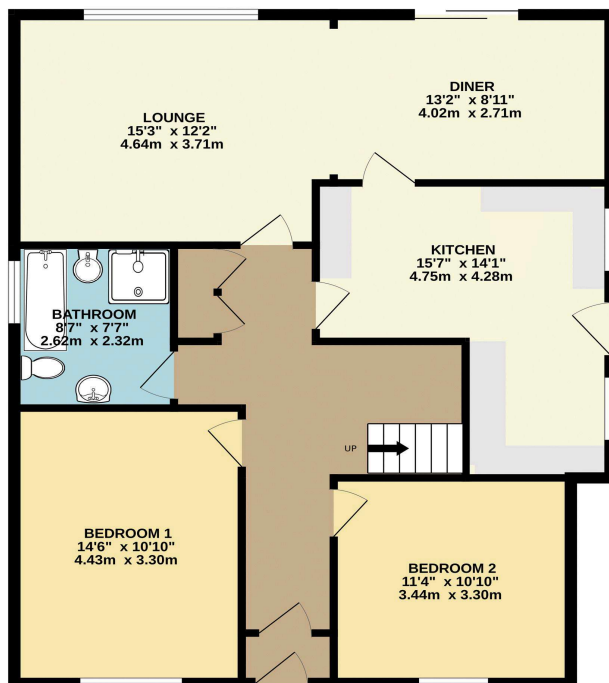
Located in the heart of Burley In Wharfedale, this property enjoys close proximity to a plethora of local amenities, ensuring convenience at every turn. Explore quaint cafes, charming boutiques, and essential shops just moments away. For outdoor enthusiasts, picturesque walking trails and scenic parks dot the surrounding landscape, offering endless opportunities for exploration and recreation.

Commuting is a breeze with excellent transport links nearby. Whether you're heading to the bustling Leeds city centre or neighbouring towns, convenient access to buses and trains makes every journey effortless. Plus, with major roadways easily accessible, travel to destinations further afield is a seamless affair.

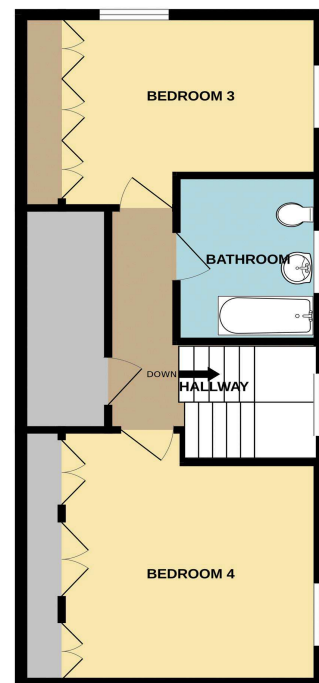
Don't miss your chance to experience the epitome of comfortable living in this delightful home in Burey In Wharfedale. Your oasis awaits!

FLOOR PLANS

GROUND FLOOR
982 sq.ft. (91.3 sq.m.) approx.



1ST FLOOR
502 sq.ft. (46.7 sq.m.) approx.



TOTAL FLOOR AREA: 1485 sq.ft. (137.9 sq.m.) approx.

Whilst every attempt has been made to ensure the accuracy of the floorplan contained here, measurements of doors, windows, rooms and any other items are approximate and no responsibility is taken for any error, omission or mis-statement. This plan is for illustrative purposes only and should be used as such by any prospective purchaser. The services, systems and appliances shown have not been tested and no guarantee as to their operability or efficiency can be given.
Made with Metropix ©2024

