

Embassy Court NW8

LREO



Virtually Staged



Wellington Road NW8

£3,999,950

A boutique building of just 25 apartments.

We are pleased to offer this delightful three-bedroom, two bathroom fourth floor apartment measuring 1,490 sq ft/ 138 sq m, set within this very popular scheme in the heart of St Johns Wood.

Embassy Court has been designed by the renowned architect Piers Gough of CZWD and this landmark building offers a 5 star hotel style environment tailored to the needs of the occupiers.

Benefits include a 24 hour concierge service, secure parking and landscaped gardens. This building is ideally located close to Regents Park and the Boutiques, Cafes and Restaurants of St. John's Wood High Street and approximately 100 yards from St John's Wood underground station.

Contact Vic Chhabria
020 3348 8000
vic@lreo.co.uk



Virtually Staged

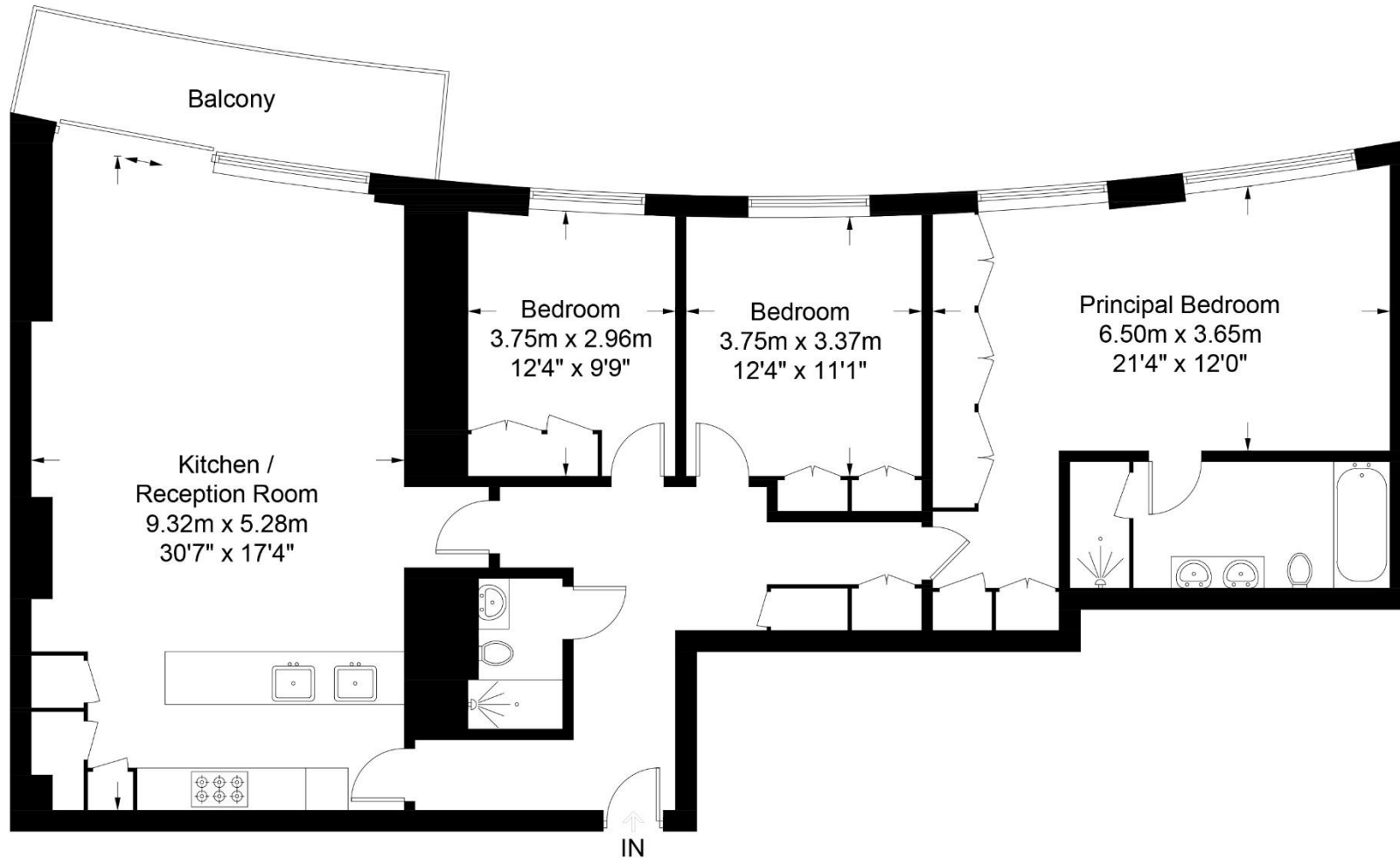


Virtually Staged





Approximate Gross Internal Area = 1509 sq ft / 140.2 sq m

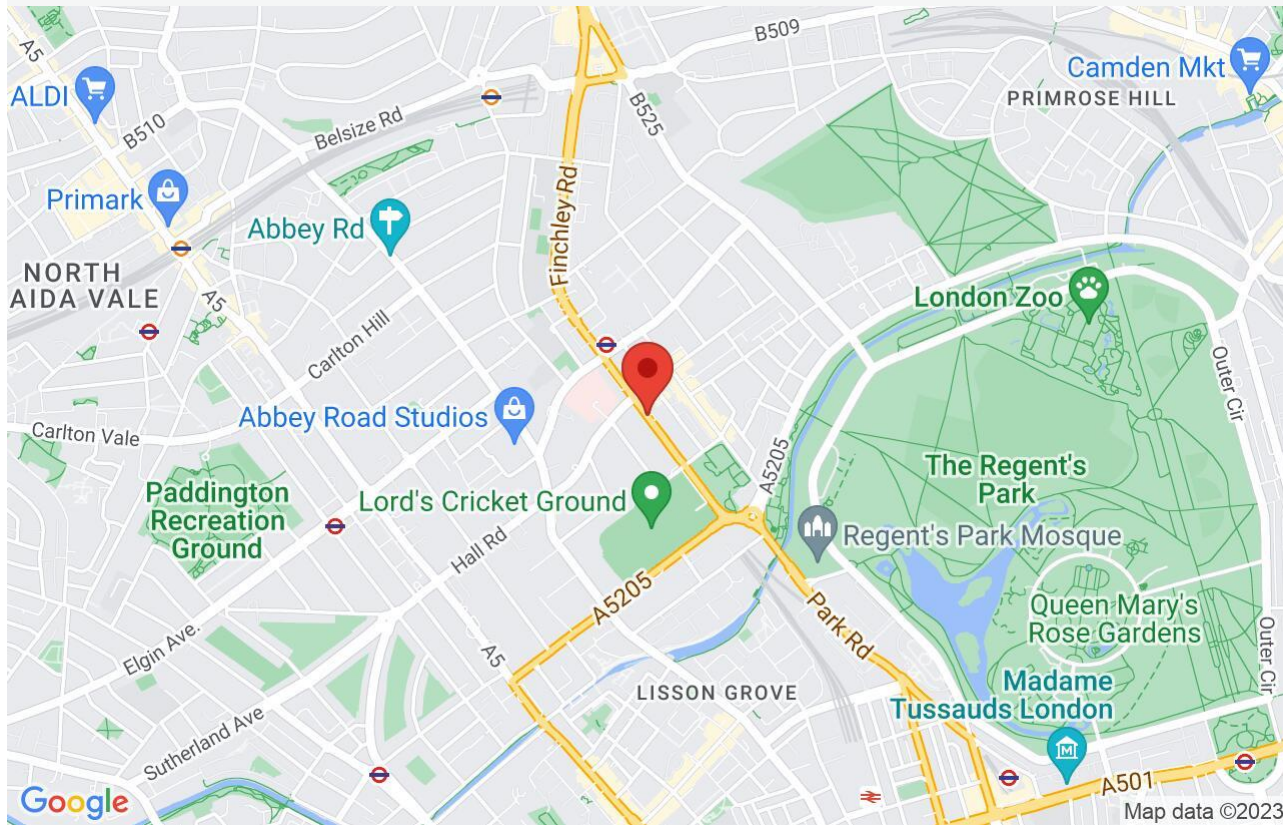


Fourth Floor



**Certified
Property
Measurer**

This plan is for layout guidance only. Not drawn to scale unless stated. Windows and door openings are approximate. Whilst every care is taken in the preparation of this plan, please check all dimensions, shapes and compass bearings before making any decisions reliant upon them. (ID974214)



3 Bed

2 Bath

Reception

1,490 sq ft

Leasehold

EPC Available

24 hour concierge

Secure parking

London Real Estate Office, their clients and any joint agents give notice that: 1: They are not authorised to make or give any representations or warranties in relation to the property either here or elsewhere, either on their own behalf or on behalf of their client or otherwise. They assume no responsibility for any statement that may be made in these particulars. These particulars do not form part of any offer or contract and must not be relied upon as statements or representations of fact. 2: Any areas, measurements or distances are approximate. The text, photographs and plans are for guidance only and are not necessarily comprehensive. It should not be assumed that the property has all necessary planning, building regulation or other consents and London Real Estate Office have not tested any services, equipment or facilities. Purchasers must satisfy themselves by inspection or otherwise.

LREO

LONDON REAL ESTATE OFFICE